

# **The Southern Part of Poland and a Loop through Czech Republic** (Part 2)

## The Southern Part of Poland and a Loop through Czech Republic (Part 2)

1<sup>st</sup> EEEIC 2002

2<sup>nd</sup> EEEIC 2003

3<sup>rd</sup> EEEIC 2004

4<sup>th</sup> EEEIC 2005

5<sup>th</sup> EEEIC 2006

6<sup>th</sup> EEEIC 2007

7<sup>th</sup> EEEIC 2008

8<sup>th</sup> EEEIC 2009

9<sup>th</sup> EEEIC 2010

10<sup>th</sup> EEEIC 2011

11<sup>th</sup> EEEIC 2012

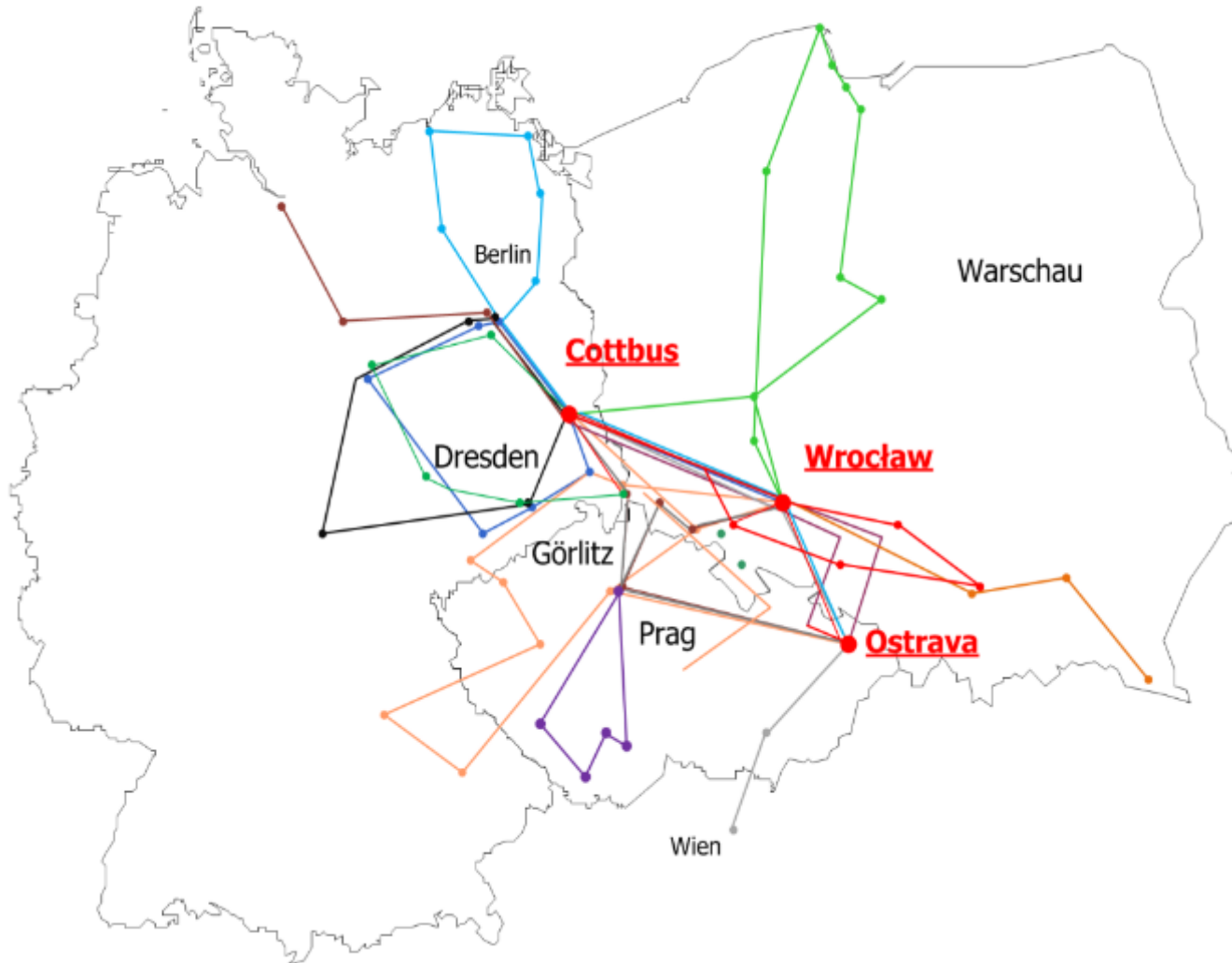
12<sup>th</sup> EEEIC 2013

13<sup>th</sup> EEEIC 2014

14<sup>th</sup> EEEIC 2015

15<sup>th</sup> EEEIC 2016

16<sup>th</sup> EEEIC 2017



EEEIC 2018 / 2019 are not shown here; EEEIC 2020 / 2021 were cancelled due to CoViD 19 pandemic

Pictures taken by Harald Schwarz and other excursion participants, maps are taken from BING

Since 2002 the BTU Dept. of Energy Distribution and High Voltage Engineering and our colleges from the Universities of Technology in Wroclaw and Ostrava organize a technical excursion with a student group from all three universities either in Germany, in Poland or in Czech Republic.

Pictures from these excursions were combined with pictures taken from several business or tourist trips.

Beside our outgoing students from MSc Power Engineering also the students, who will join these excursions every year, will find here some more detailed information grouped in:

- City of Wroclaw and WUT-Wroclaw University of Technology
- The Central and the Northern Part of Poland
- The Southern Part of Poland with a loop through Czech Republic – part 1
- The Southern Part of Poland with a loop through Czech Republic – part 2

## The Southern Part of Poland and a Loop through Czech Republic (Part 2)

If you want to see directly the pictures from selected cities, please go directly to the following slide:

|                     |    |
|---------------------|----|
| Ostrava             | 4  |
| Brno                | 20 |
| Velke Mezirici      | 29 |
| Trebic              | 31 |
| Dalesice / Dukovany | 40 |
| Krumlov             | 44 |
| Orlik               | 51 |
| Praha               | 55 |
| Plzen               | 71 |
| Karlovy Vary        | 72 |





Ostrava is a city in the north-east of the Czech Republic, and the capital of the Moravian-Silesian Region. It has about 288,000 inhabitants. It lies 15 km from the border with Poland, at the confluences of four rivers: Oder, Opava, Ostravice and Lučina. Ostrava is the third largest city in the Czech Republic in terms of both population and area, the second largest city in the region of Moravia, and the largest city in the historical land of Czech Silesia. It straddles the border of the two historic provinces of Moravia and Silesia. The wider conurbation – which also includes the towns of Bohumín, Havířov, Karviná, Orlová, Petřvald and Rychvald – is home to about 500,000 people, making it the largest urban area in the Czech Republic apart from the capital, Prague. Ostrava grew in importance due to its position at the heart of a major coalfield, becoming an important industrial engine of the Austrian empire. During the 20th century it was known as the "steel heart" of Czechoslovakia thanks to its status as a coal-mining and metallurgical centre, but since the fall of communism in 1989 it has undergone radical and far-reaching changes to its economic base. Taken from Wikipedia



Pictures taken by Harald Schwarz and other excursion participants, maps are taken from BING





Pictures taken by Harald Schwarz and other excursion participants, maps are taken from BING









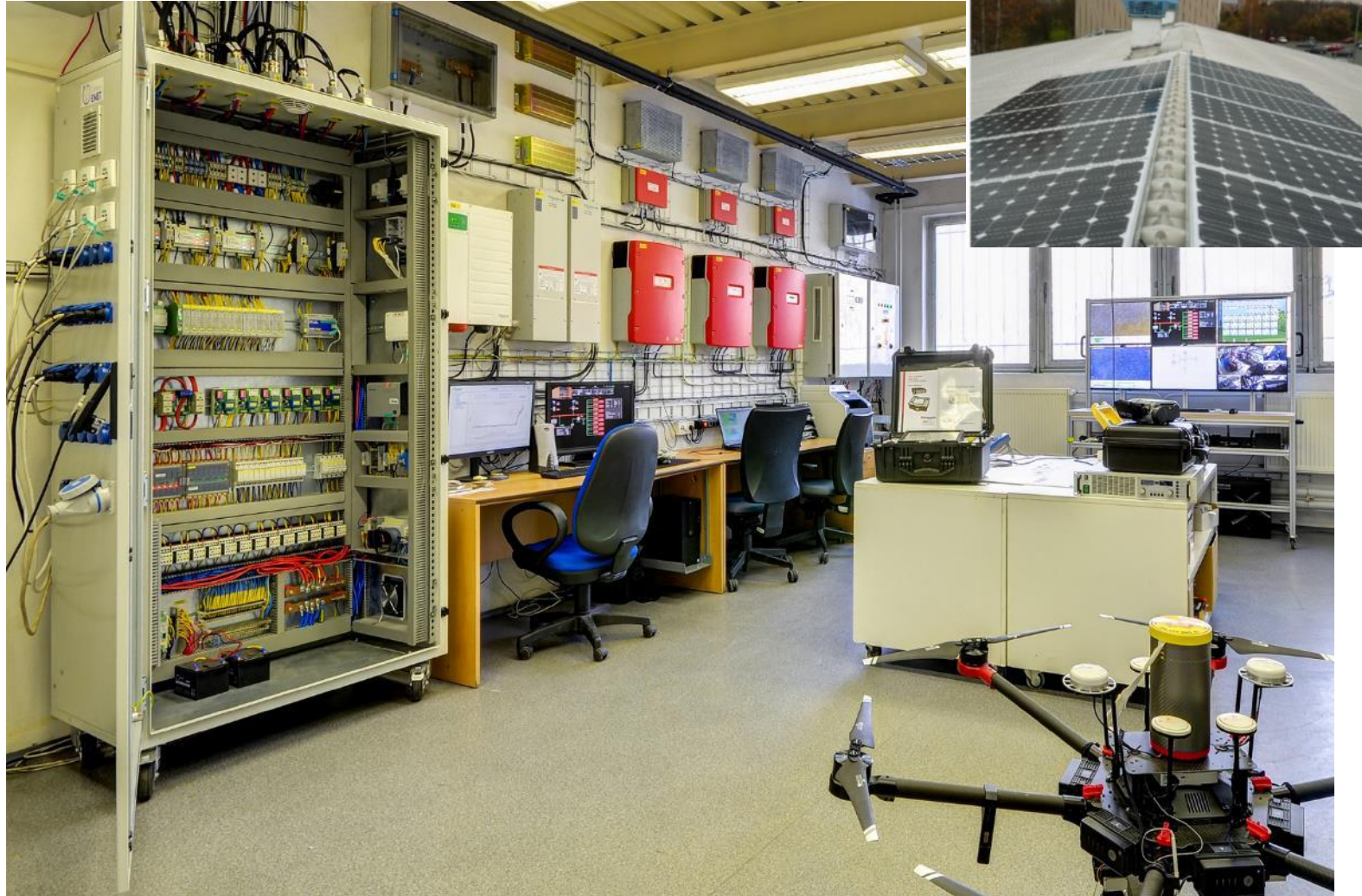
Pictures taken by Harald Schwarz and other excursion participants, maps are taken from BING





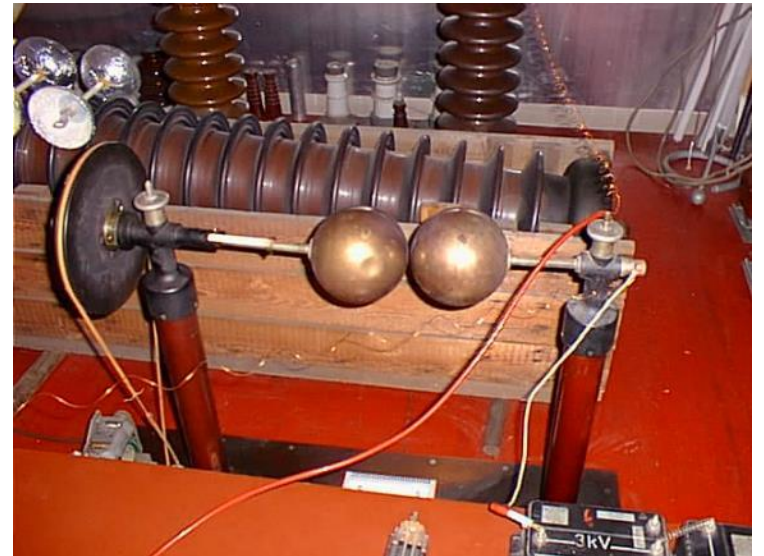
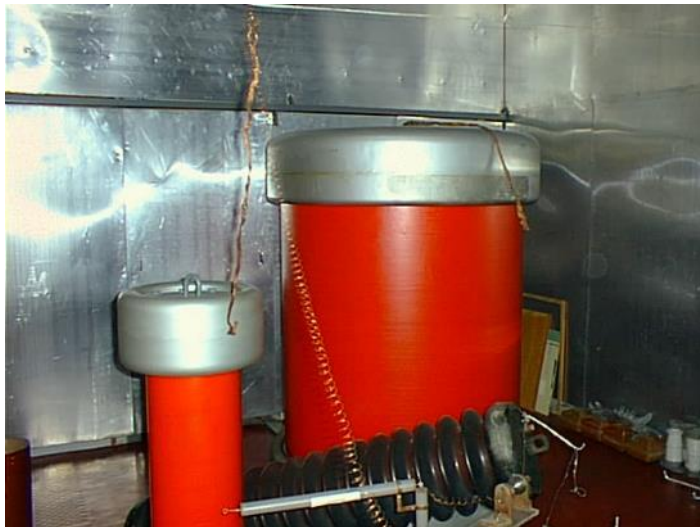
Pictures taken by Harald Schwarz and other excursion participants, maps are taken from BING





Pictures taken by Harald Schwarz and other excursion participants, maps are taken from BING





Pictures taken by Harald Schwarz and other excursion participants, maps are taken from BING

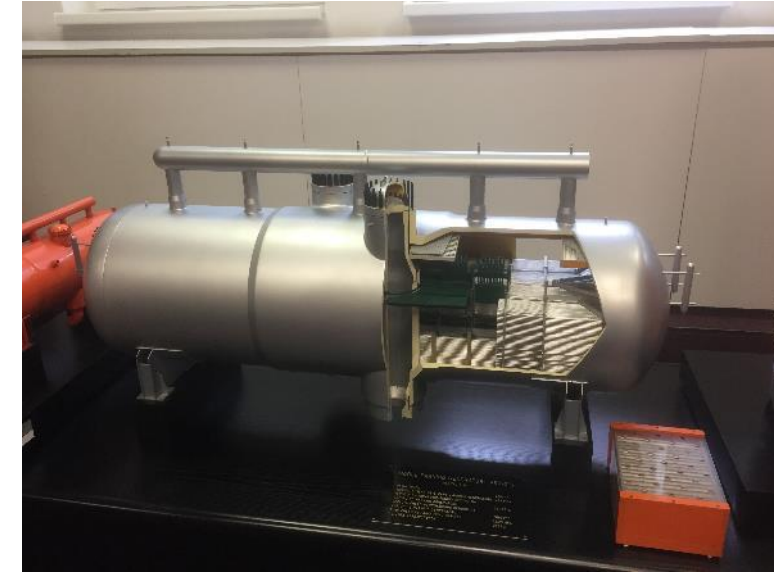




Pictures taken by Harald Schwarz and other excursion participants, maps are taken from BING



## Ostrava – Skolici Stredisko Training Center for Nuclear Power Plants



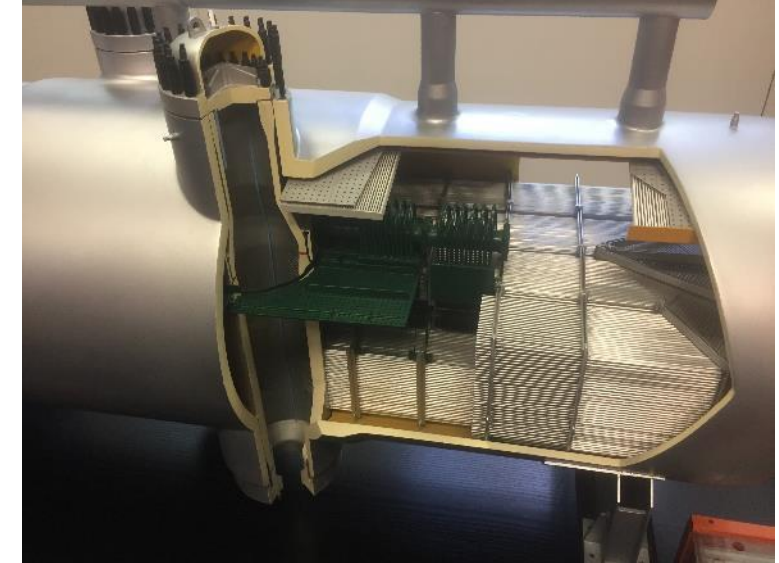
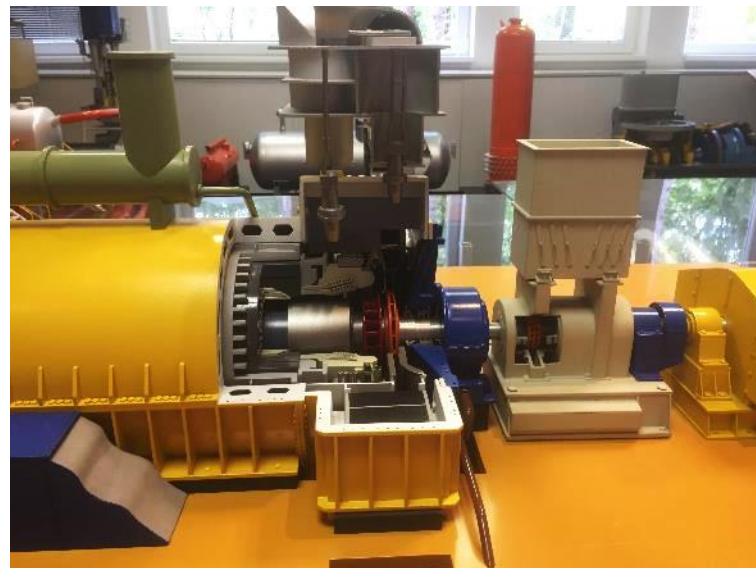
Pictures taken by Harald Schwarz and other excursion participants, maps are taken from BING





Pictures taken by Harald Schwarz and other excursion participants, maps are taken from BING





Pictures taken by Harald Schwarz and other excursion participants, maps are taken from BING



### Vítkovice steel mill, mid 19th century

Vítkovice, initially agricultural village, witnessed heavy industrialization after 1828, when the Olomouc archbishop Archduke Rudolf of Austria at the instigation of geologist Franz Xaver Riepl had an iron and steel mill (Rudolfshütte) built, the first in the Austrian Empire to use the puddling technique. Since then the village became an important industrial center of the region.

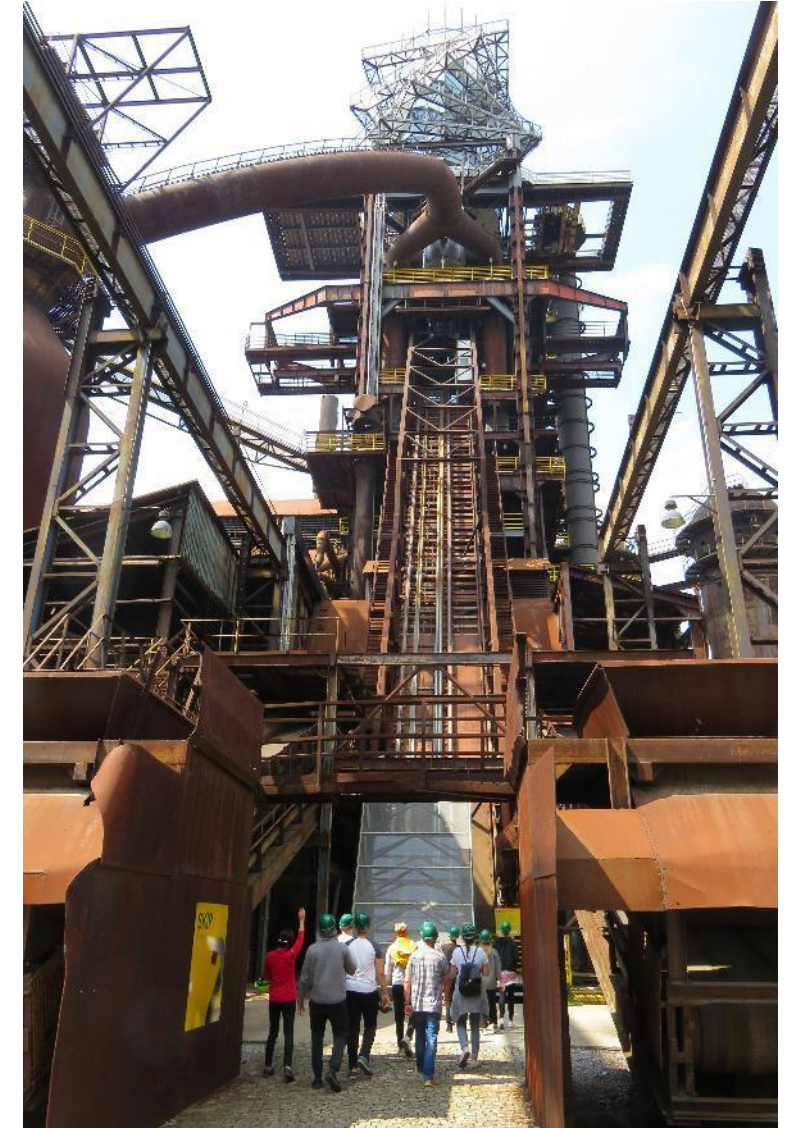
The iron works were continuously enlarged and finally purchased by the Viennese banker Salomon Mayer von Rothschild in 1843. He also financed the extension of the Emperor Ferdinand Northern Railway from Vienna to Ostrava with a branch-off to his steel mill, which was completed in 1855. His Rothschild heirs in 1873 founded the Witkowitz Bergbau- und Hüttengewerkschaft, the largest iron and steel works in the Austro-Hungarian Monarchy. After the German occupation of Czechoslovakia in 1939, their possessions were "aryanized" and taken over by the Reichswerke Hermann Göring conglomerate. After World War II they were socialised as the Vítkovické železářny Klement Gottwald n.p. (VŽKG) by the Czechoslovak state.

Taken from Wikipedia

Pictures taken by Harald Schwarz and other excursion participants, maps are taken from BING







Pictures taken by Harald Schwarz and other excursion participants, maps are taken from BING



## Ostrava – Vitkovice Steel Mill



Pictures taken by Harald Schwarz and other excursion participants, maps are taken from BING

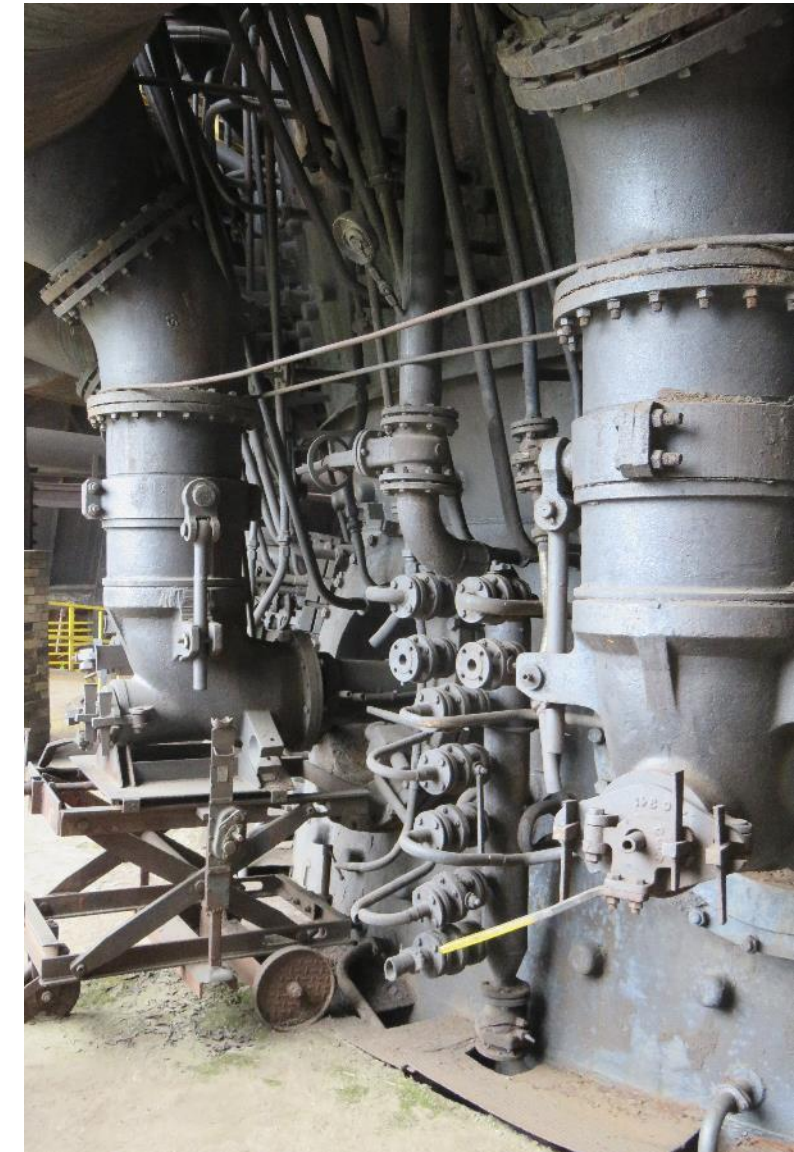
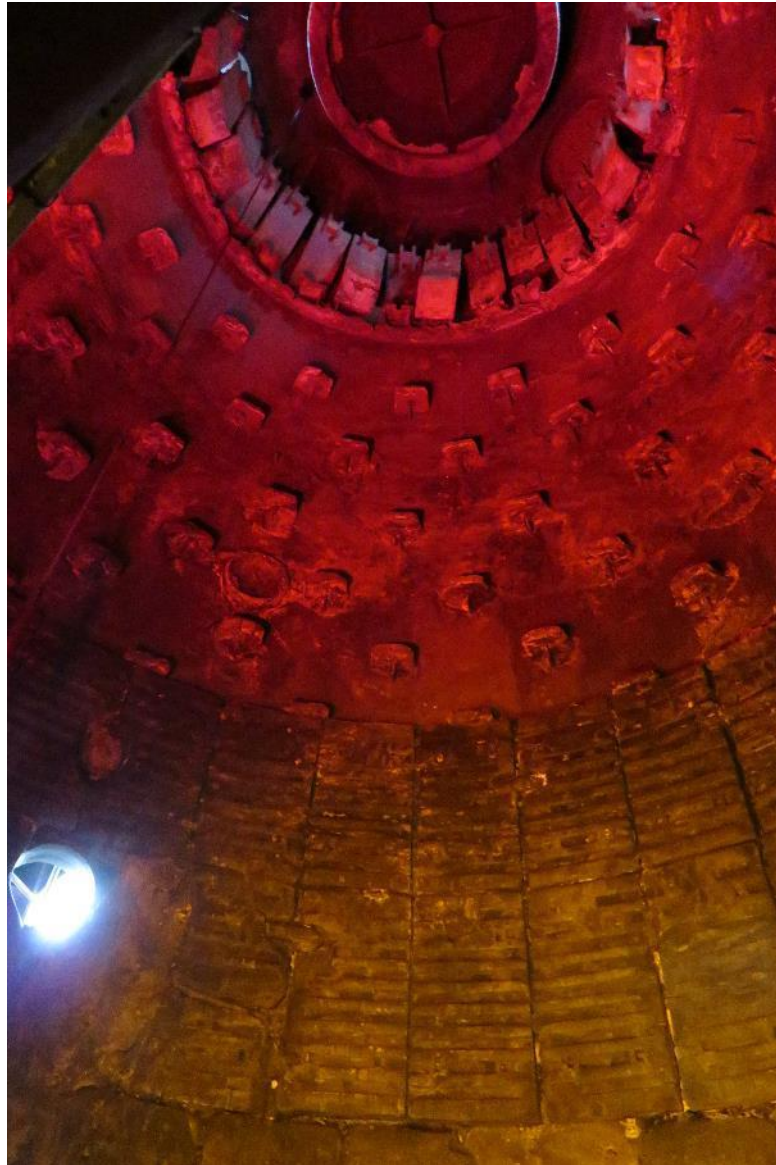


## Ostrava – Vitkovice Steel Mill



Pictures taken by Harald Schwarz and other excursion participants, maps are taken from BING

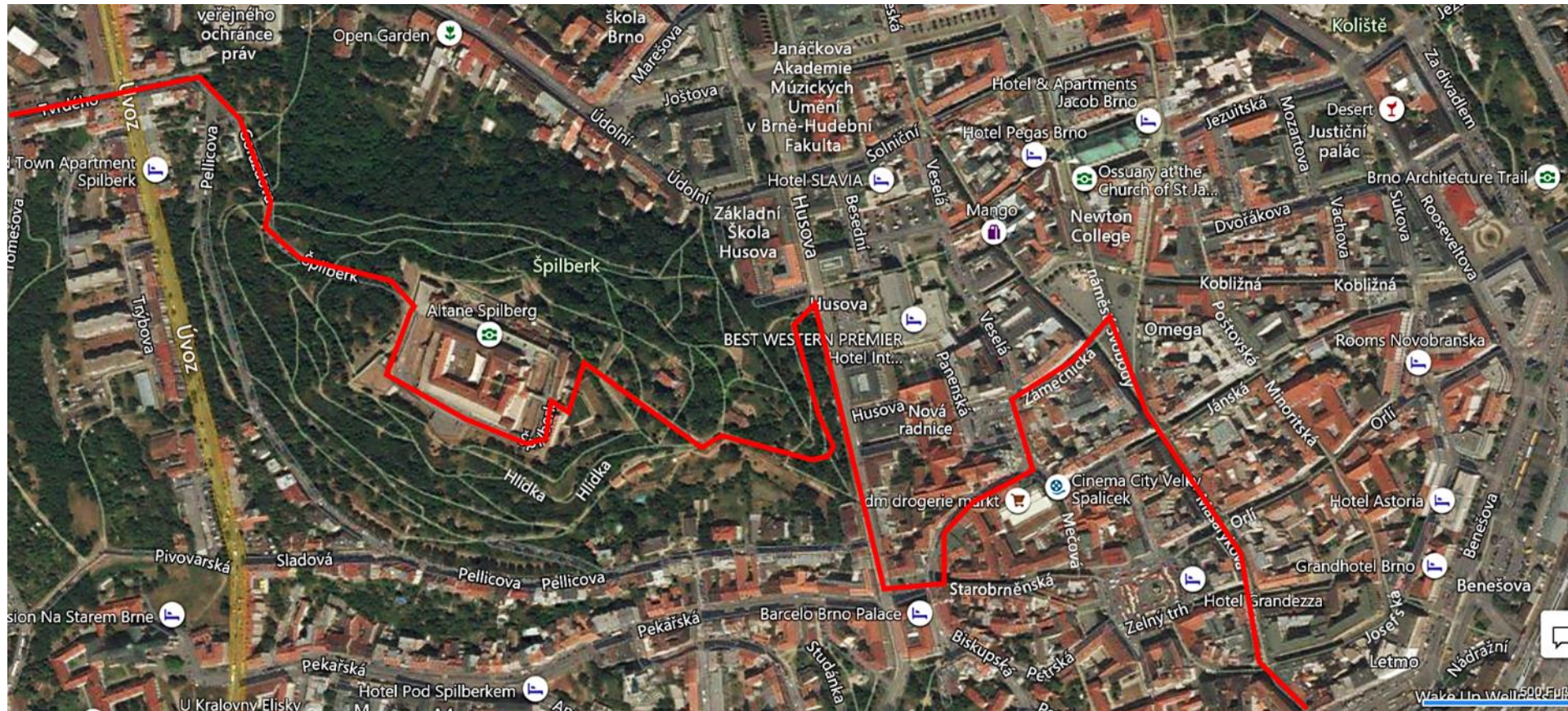




Pictures taken by Harald Schwarz and other excursion participants, maps are taken from BING



Brno is a city in the South Moravian Region of the Czech Republic. Located at the confluence of the Svitava and Svatka rivers, Brno has about 380,000 inhabitants, making it the second-largest city in the Czech Republic after the capital, Prague, and one of the 100 largest cities of the EU. The Brno metropolitan area has more than 600,000 inhabitants. Brno is the former capital city of Moravia and the political and cultural hub of the South Moravian Region. It is the centre of the Czech judiciary, with the seats of the Constitutional Court, the Supreme Court, the Supreme Administrative Court, and the Supreme Public Prosecutor's Office, and a number of state authorities, including the Ombudsman,[6] and the Office for the Protection of Competition. Brno is also an important centre of higher education, with 33 faculties belonging to 13 institutes of higher education and about 89,000 students. Taken from Wikipedia



Pictures taken by Harald Schwarz and other excursion participants, maps are taken from BING



## Brno - Castle



Pictures taken by Harald Schwarz and other excursion participants, maps are taken from BING





Pictures taken by Harald Schwarz and other excursion participants, maps are taken from BING



## Brno - Downtown



Pictures taken by Harald Schwarz and other excursion participants, maps are taken from BING





Pictures taken by Harald Schwarz and other excursion participants, maps are taken from BING



## Brno - Downtown



Pictures taken by Harald Schwarz and other excursion participants, maps are taken from BING



## Brno – ABB Gas Insulated Switchgear Manufacturing



Pictures taken by Harald Schwarz and other excursion participants, maps are taken from BING





Pictures taken by Harald Schwarz and other excursion participants, maps are taken from BING

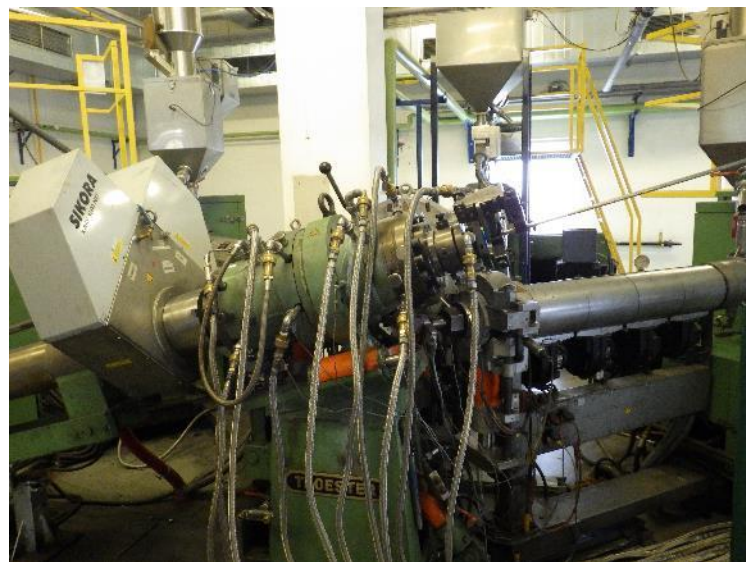




Pictures taken by Harald Schwarz and other excursion participants, maps are taken from BING



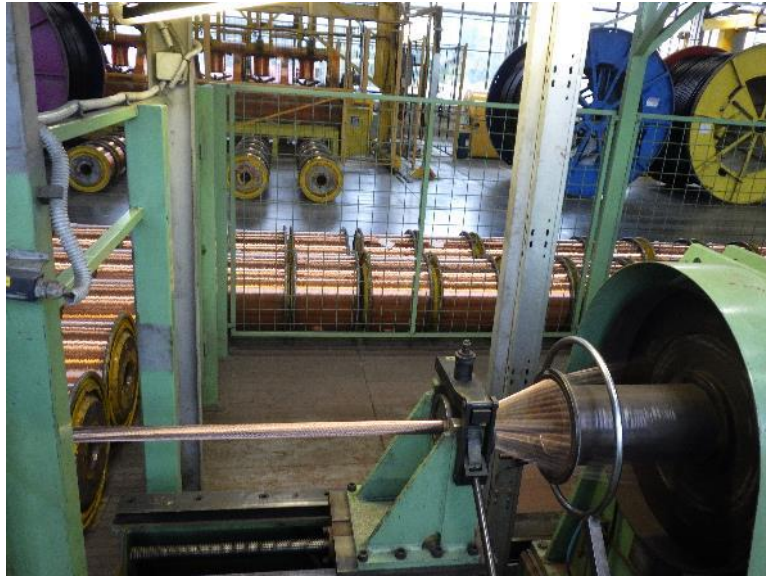
## NKT Cable Production in Velke Mezirici



Pictures taken by Harald Schwarz and other excursion participants, maps are taken from BING

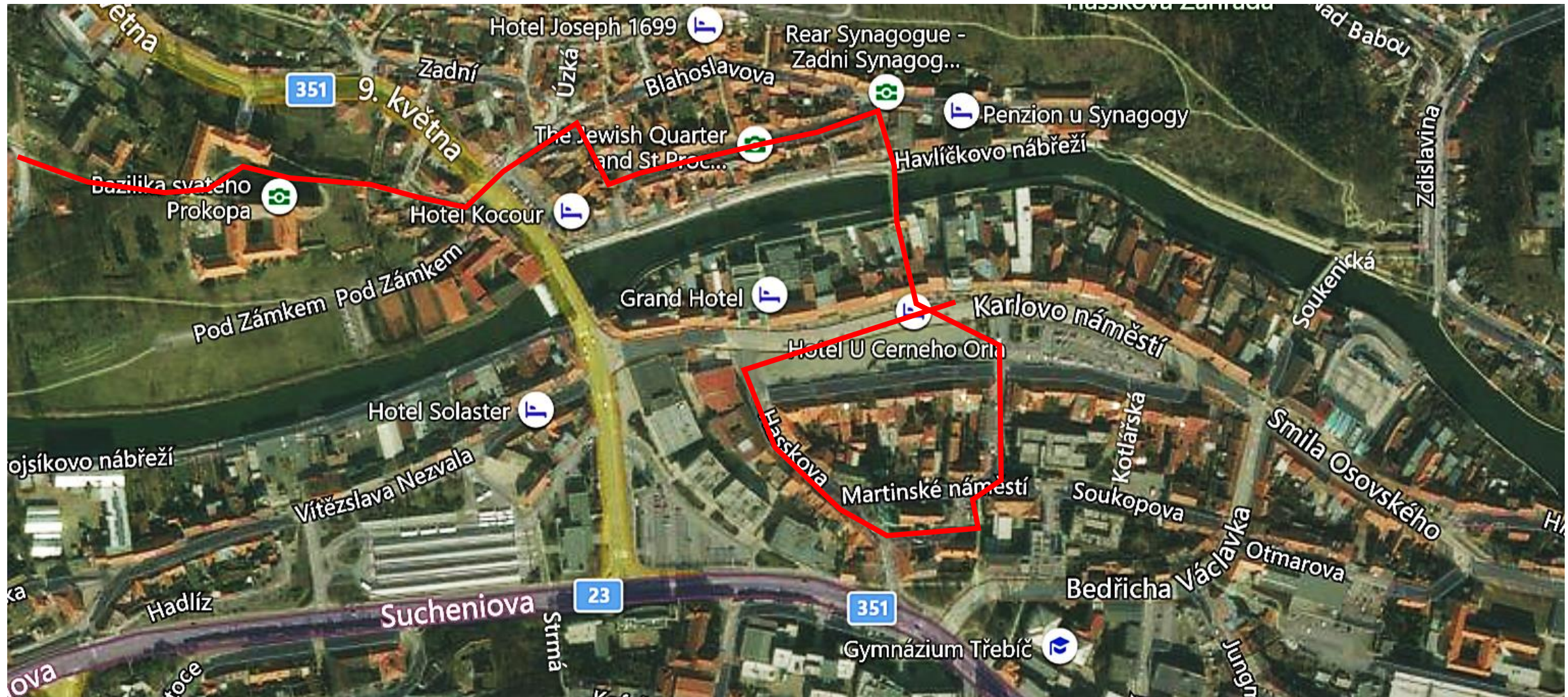


## NKT Cable Production in Velke Mezirici



Pictures taken by Harald Schwarz and other excursion participants, maps are taken from BING

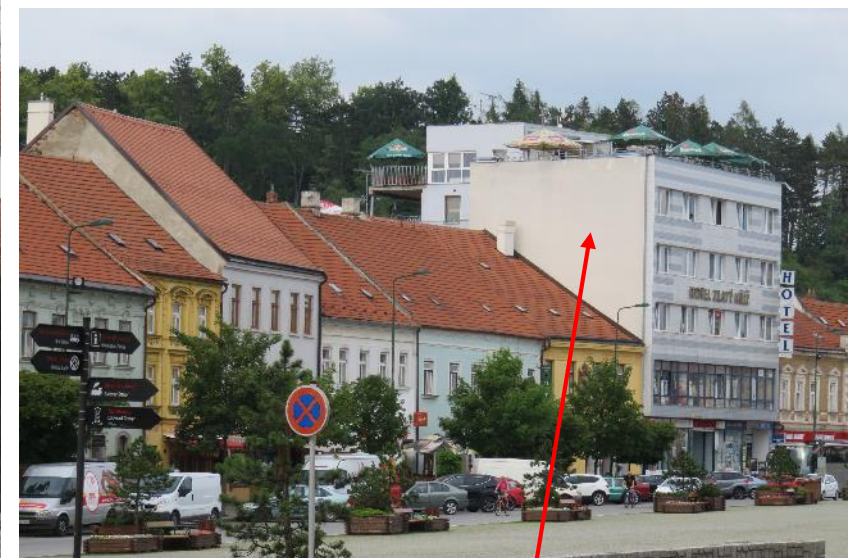




Pictures taken by Harald Schwarz and other excursion participants, maps are taken from BING



## Trebic – view towards the castle



Pictures taken by Harald Schwarz and other excursion participants, maps are taken from BING

Our Hostel



## Trebič – old market square



Pictures taken by Harald Schwarz and other excursion participants, maps are taken from BING





Pictures taken by Harald Schwarz and other excursion participants, maps are taken from BING



## Trebič – approaching the castle



Pictures taken by Harald Schwarz and other excursion participants, maps are taken from BING



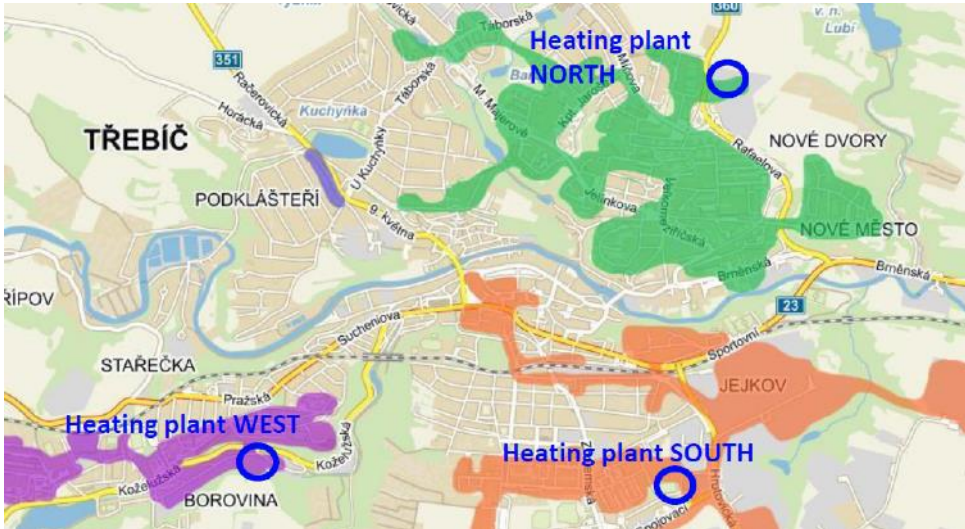
## Trebič - castle



Pictures taken by Harald Schwarz and other excursion participants, maps are taken from BING



## Bio Mass Heat Supply Station in Trebic



Pictures taken by Harald Schwarz and other excursion participants, maps are taken from BING



## Bio Mass Heat Supply Station in Trebic



Pictures taken by Harald Schwarz and other excursion participants, maps are taken from BING







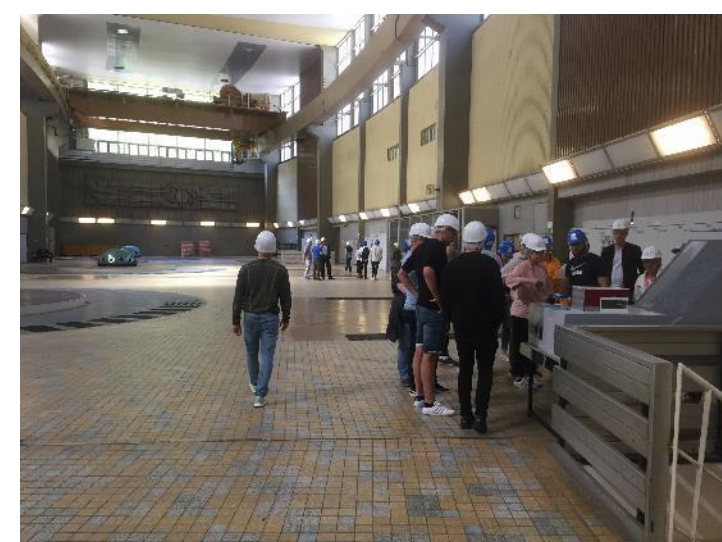
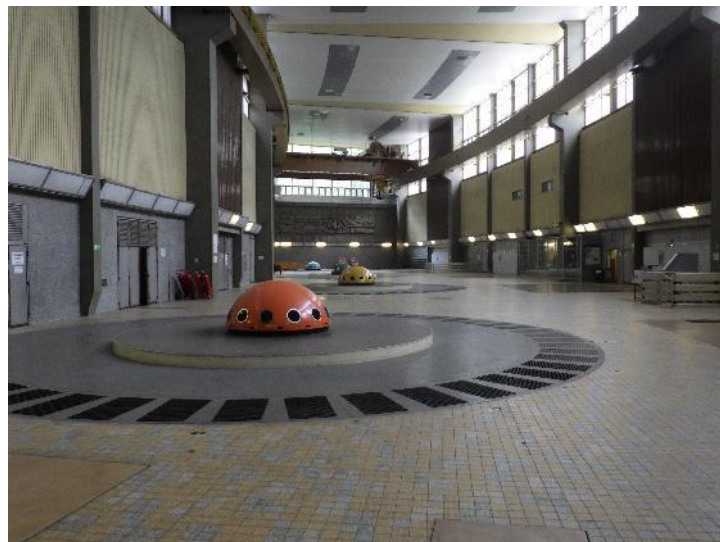


Due to safety reasons new photos were allowed while visiting NPP Dukovany





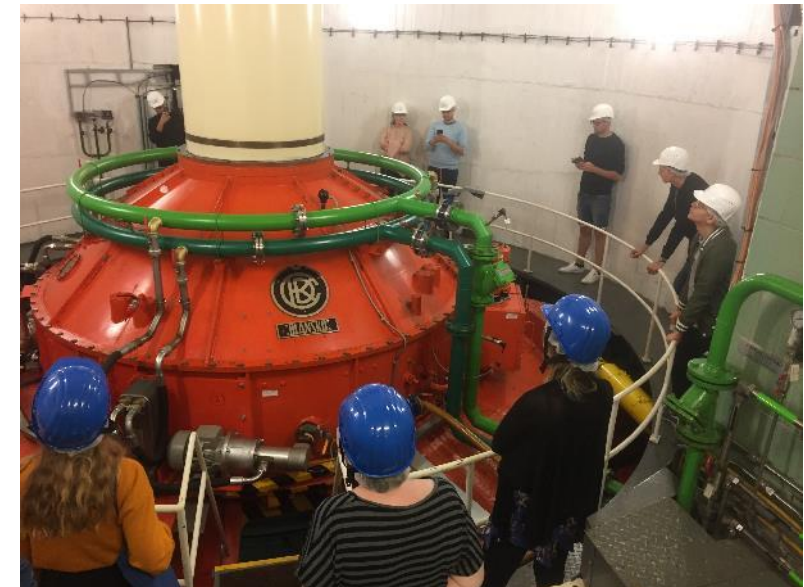
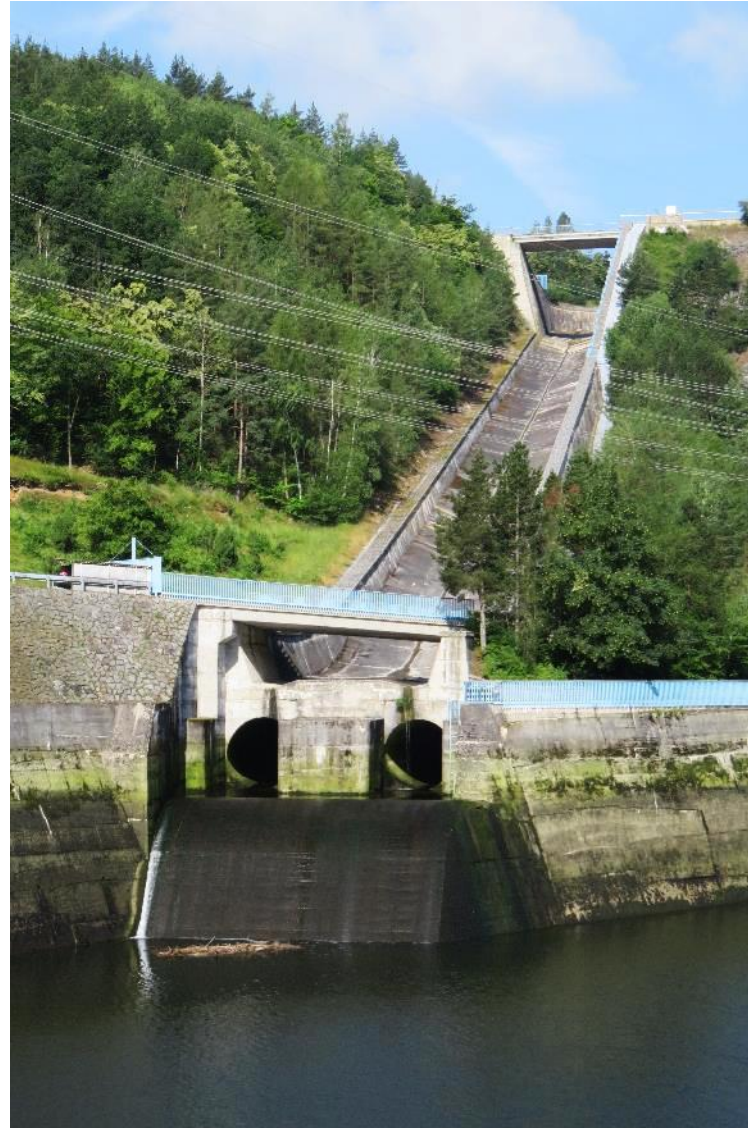
# Hydro Power Station Dalesice



Pictures taken by Harald Schwarz and other excursion participants, maps are taken from BING



# Hydro Power Station Dalesice



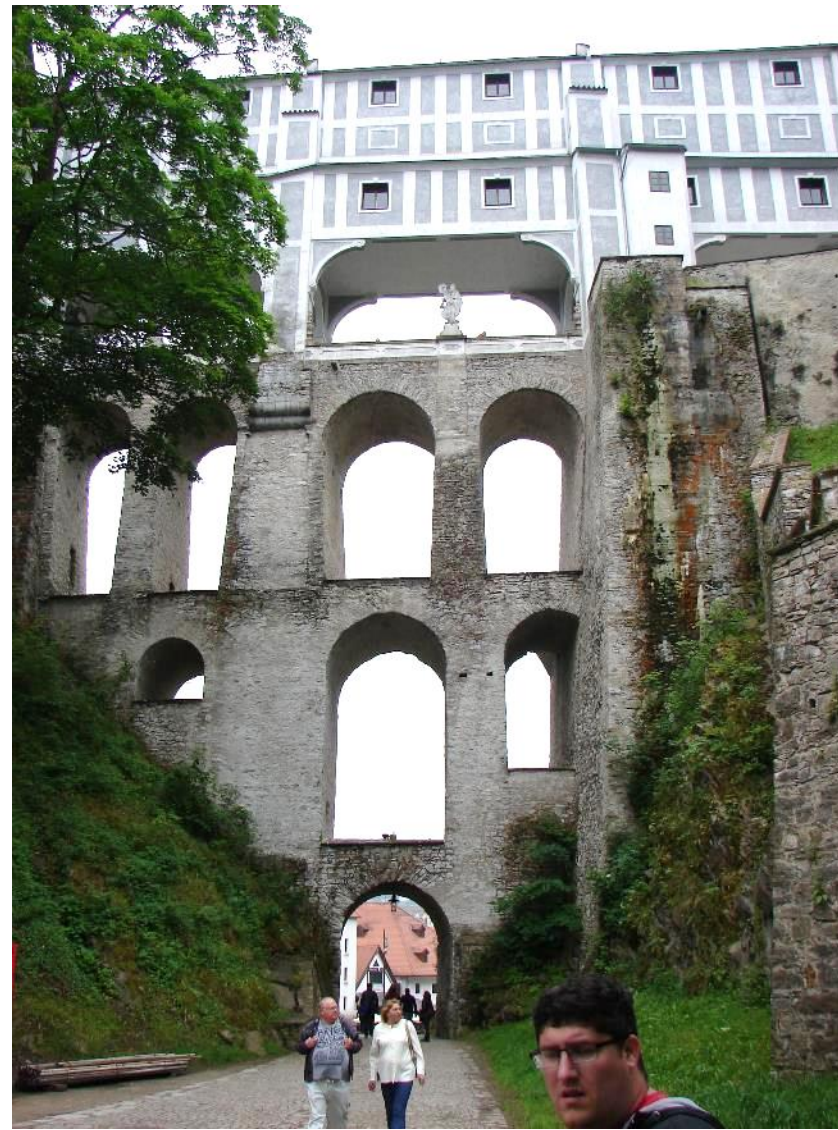
Pictures taken by Harald Schwarz and other excursion participants, maps are taken from BING





Pictures taken by Harald Schwarz and other excursion participants, maps are taken from BING





Pictures taken by Harald Schwarz and other excursion participants, maps are taken from BING





Pictures taken by Harald Schwarz and other excursion participants, maps are taken from BING



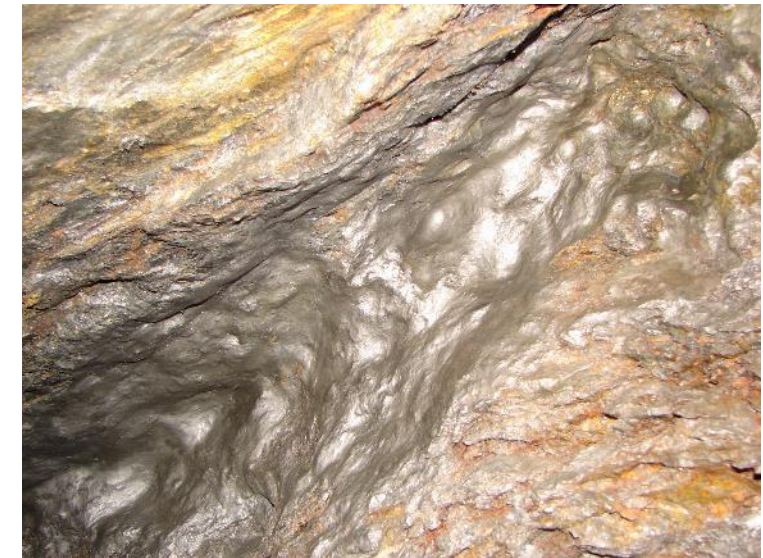
## Krumlov – Old Graphite Mine



Pictures taken by Harald Schwarz and other excursion participants, maps are taken from BING



## Krumlov – Old Graphite Mine



Pictures taken by Harald Schwarz and other excursion participants, maps are taken from BING



## Krumlov – Old Graphite Mine



Pictures taken by Harald Schwarz and other excursion participants, maps are taken from BING



Let's change from  
graphite to biomass..







Pictures taken by Harald Schwarz and other excursion participants, maps are taken from BING





Orlík nad Vltavou is a village in the South Bohemian Region of the Czech Republic. The village was formerly called Staré Sedlo, named after the château. In Czech, "nad Vltavou" means "upon the river Vltava". Both the château and the village are situated on the left river bank, on the shores of the Orlík reservoir which was created by the building of Orlík Dam.

The village can be easily reached via car or bus. It lies close to the crossroads of two main routes, one from south to north (Prague-Písek) and the other from east to west (Březnice-Tábor). The château, Orlík Castle, stands right adjacent to the water and is surrounded by a huge castle park and a game preserve. The property belongs to the House of Schwarzenberg, but during the summer months it is open to the public on most days.

Taken from Wikipedia

Pictures taken by Harald Schwarz and other excursion participants, maps are taken from BING





## Orlik – Hydro Power Station



Pictures taken by Harald Schwarz and other excursion participants, maps are taken from BING





Pictures taken by Harald Schwarz and other excursion participants, maps are taken from BING



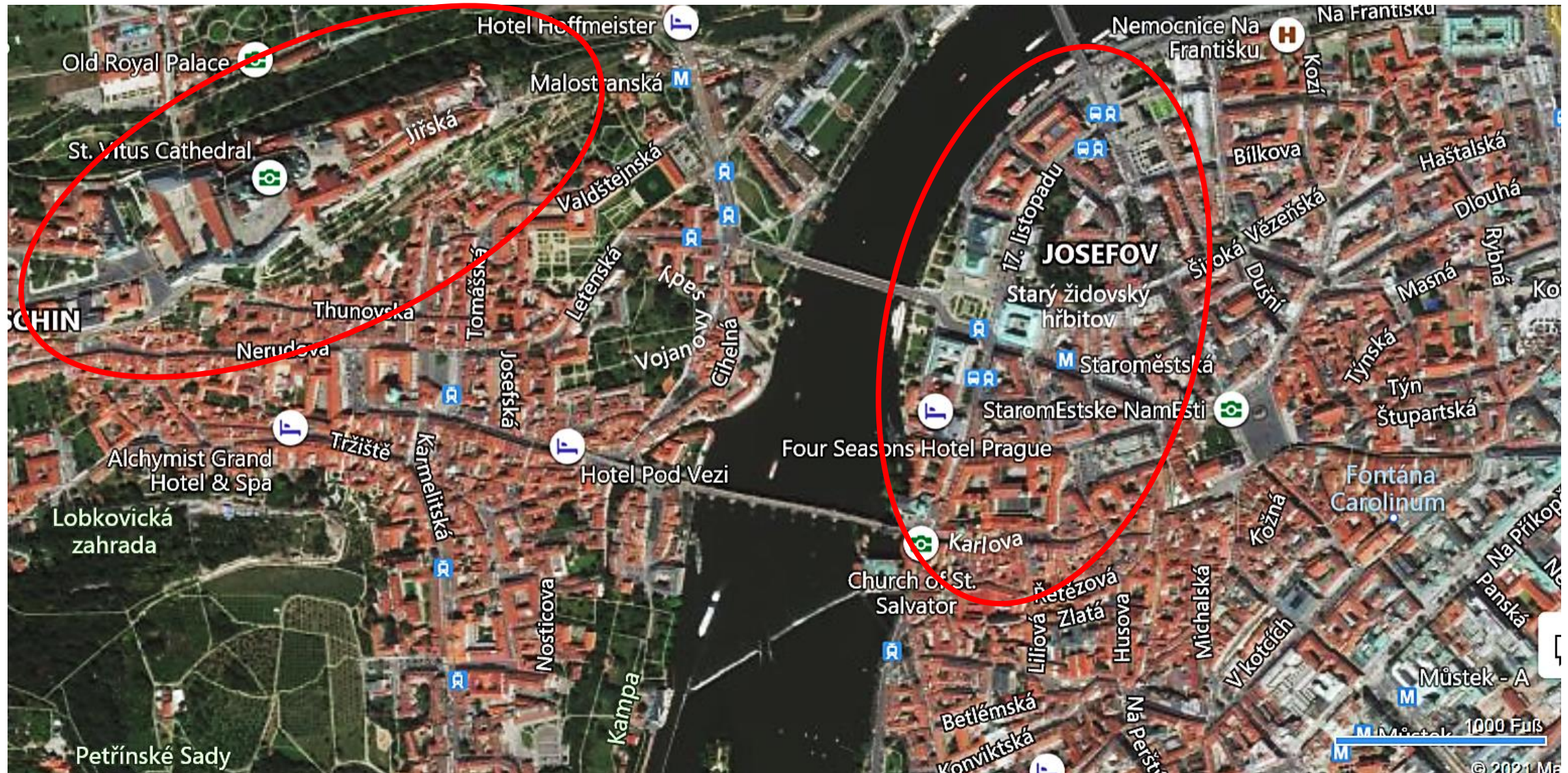
## Orlik – Hydro Power Station



Pictures taken by Harald Schwarz and other excursion participants, maps are taken from BING



## Praha – Castle (left) and downtown (right)



Pictures taken by Harald Schwarz and other excursion participants, maps are taken from BING



## Praha – approaching the castle



Pictures taken by Harald Schwarz and other excursion participants, maps are taken from BING



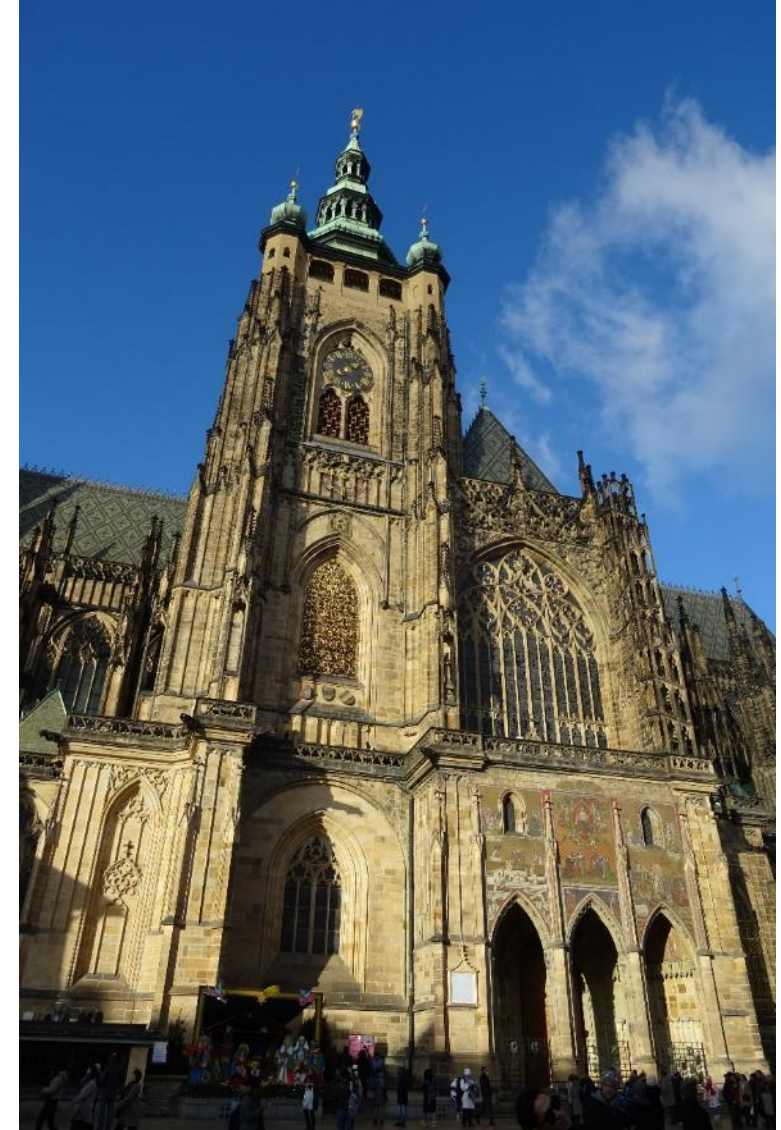
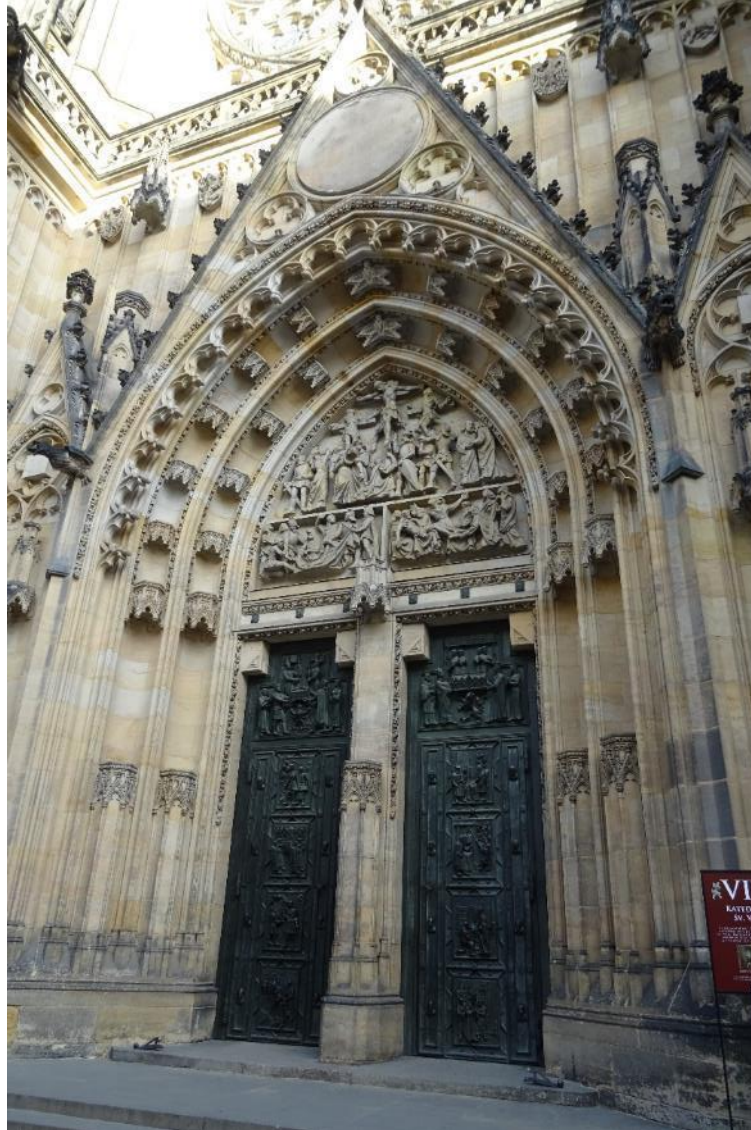
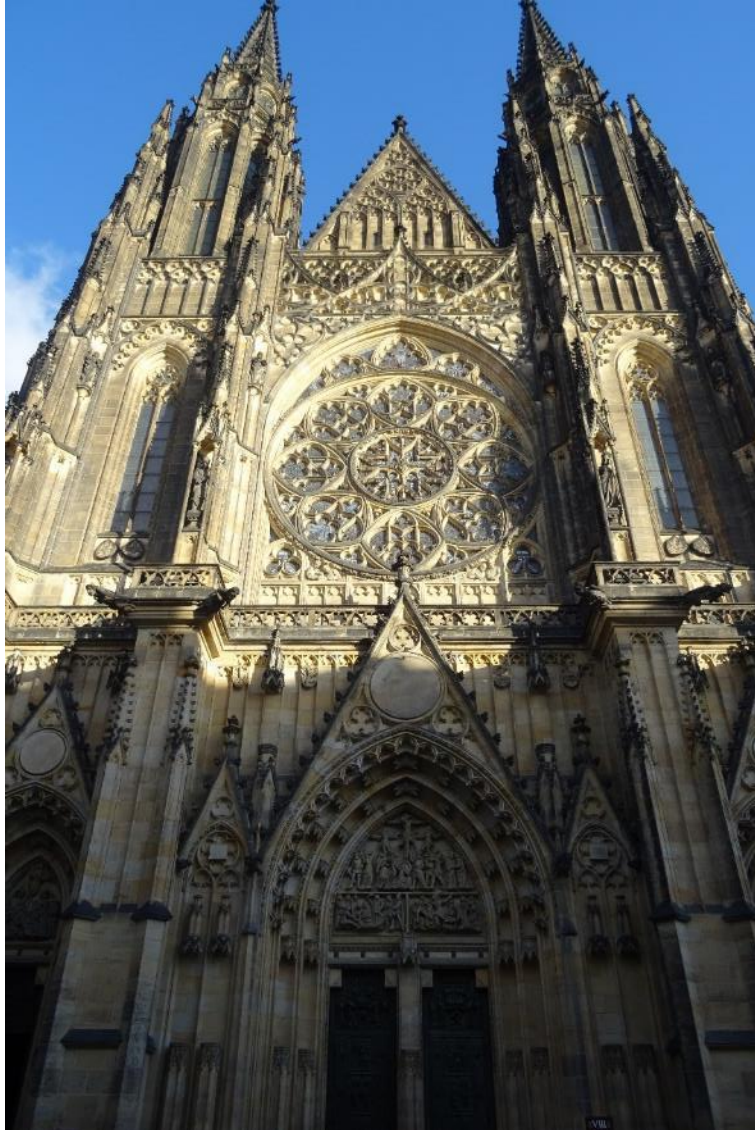
## Praha - Castle



Pictures taken by Harald Schwarz and other excursion participants, maps are taken from BING

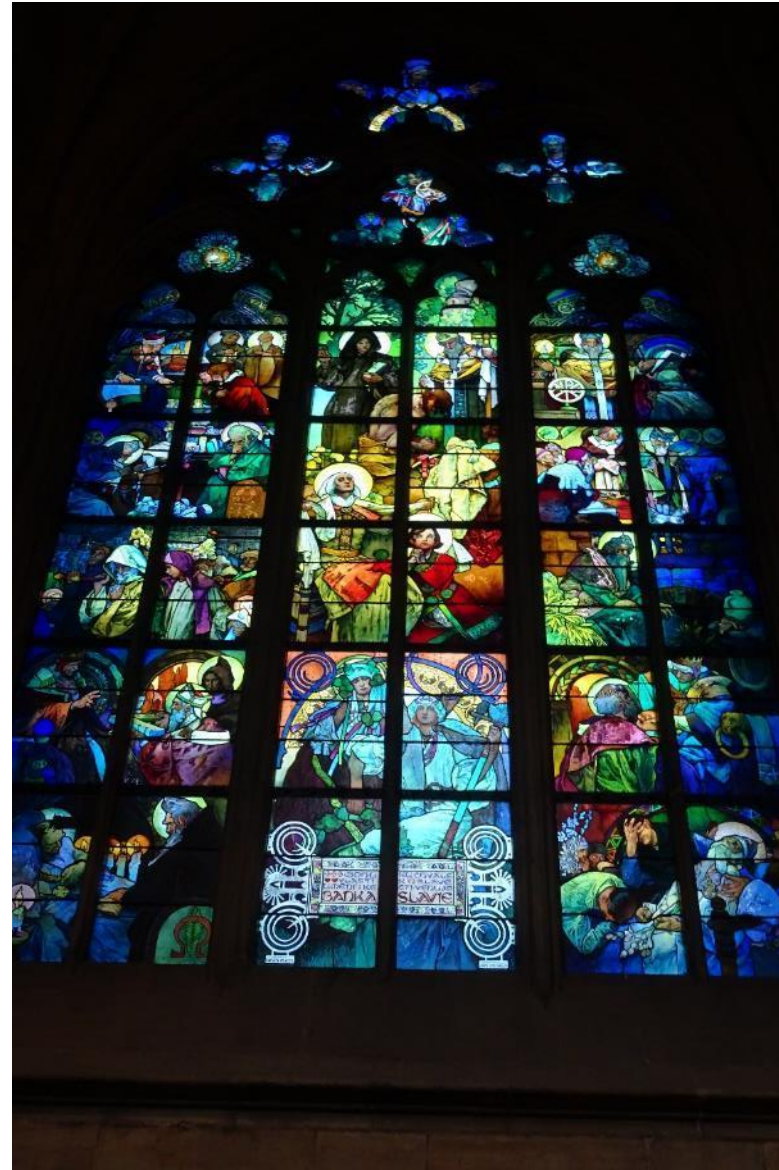
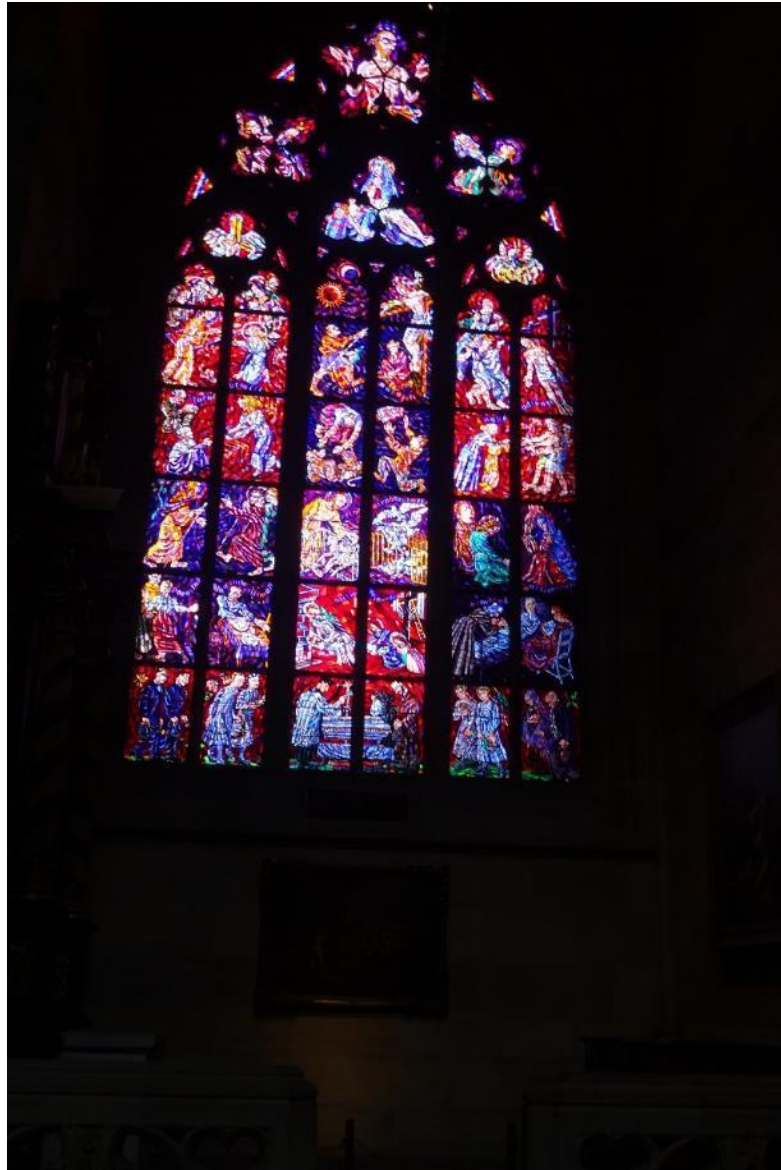


## Praha – Cathedrale inside the castle



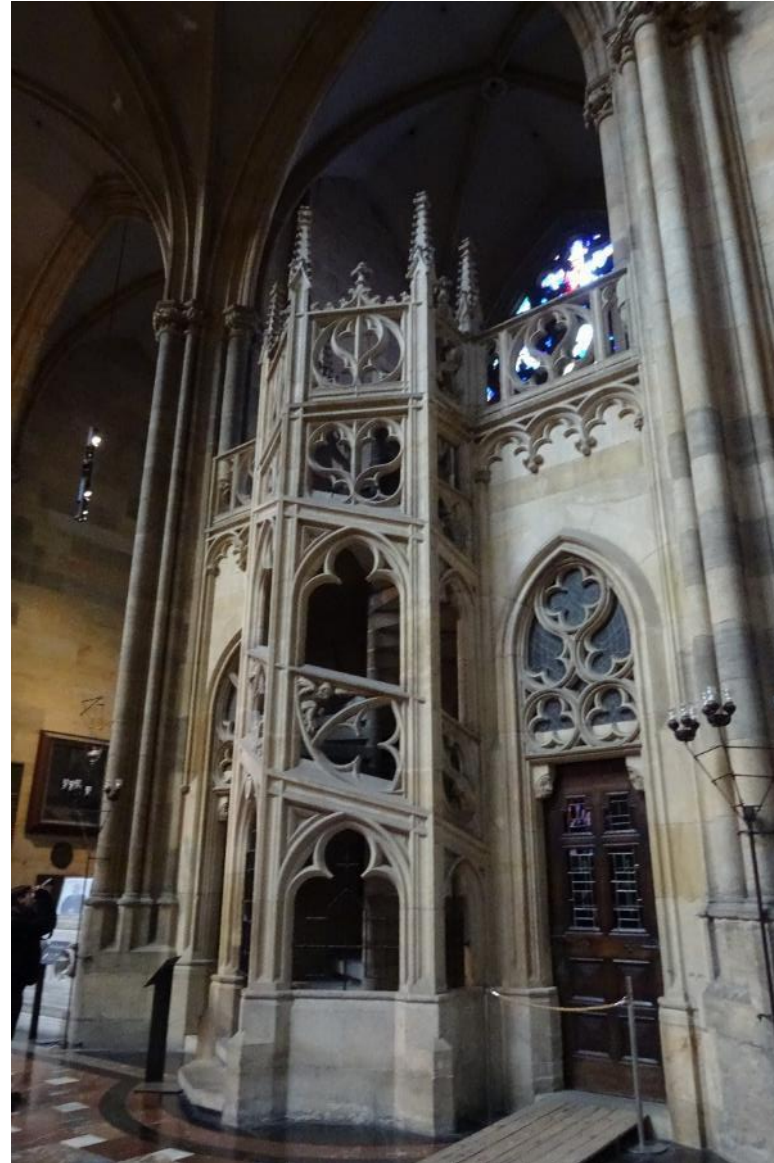
Pictures taken by Harald Schwarz and other excursion participants, maps are taken from BING





Pictures taken by Harald Schwarz and other excursion participants, maps are taken from BING





Pictures taken by Harald Schwarz and other excursion participants, maps are taken from BING







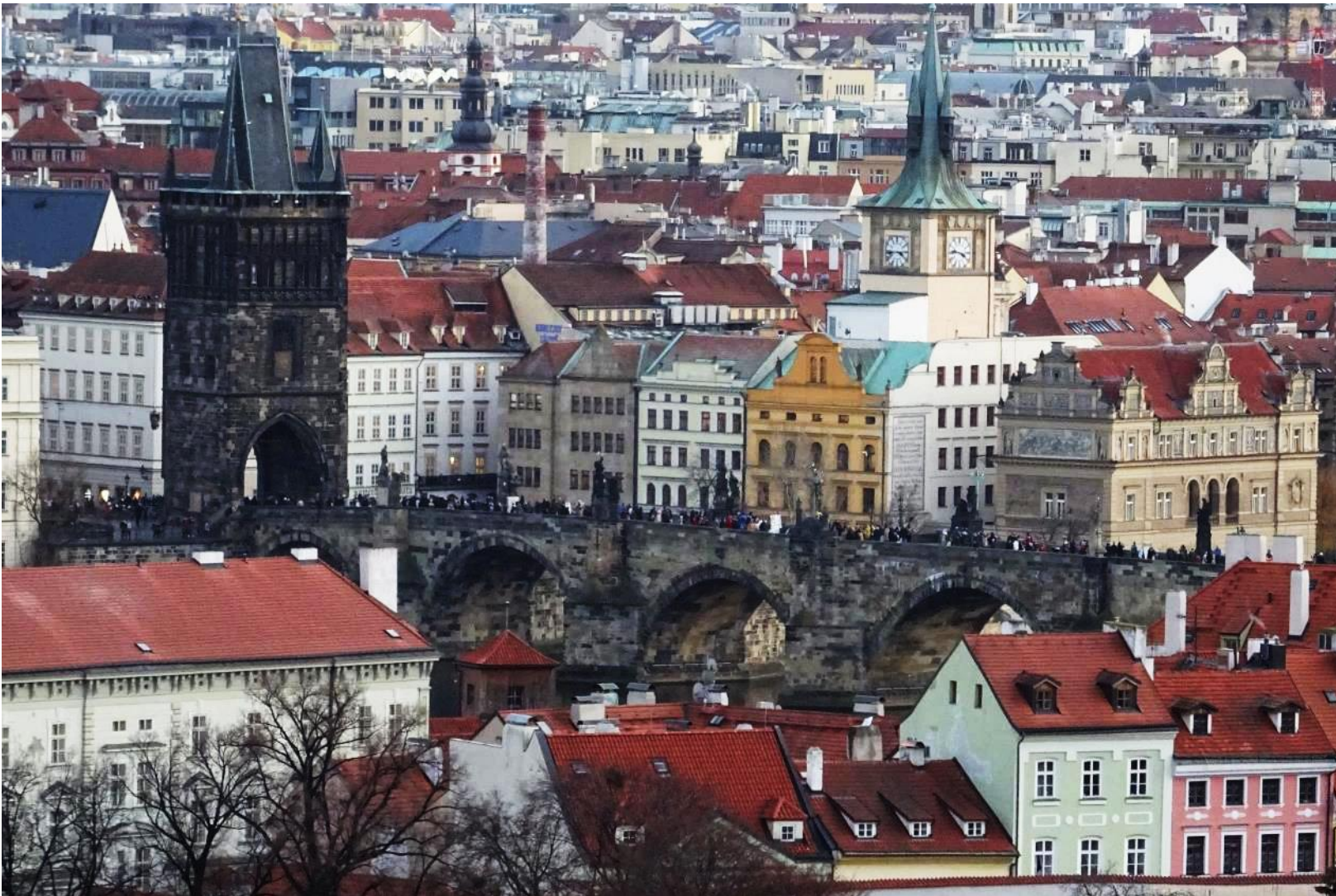
## Praha – inside the castle



Pictures taken by Harald Schwarz and other excursion participants, maps are taken from BING



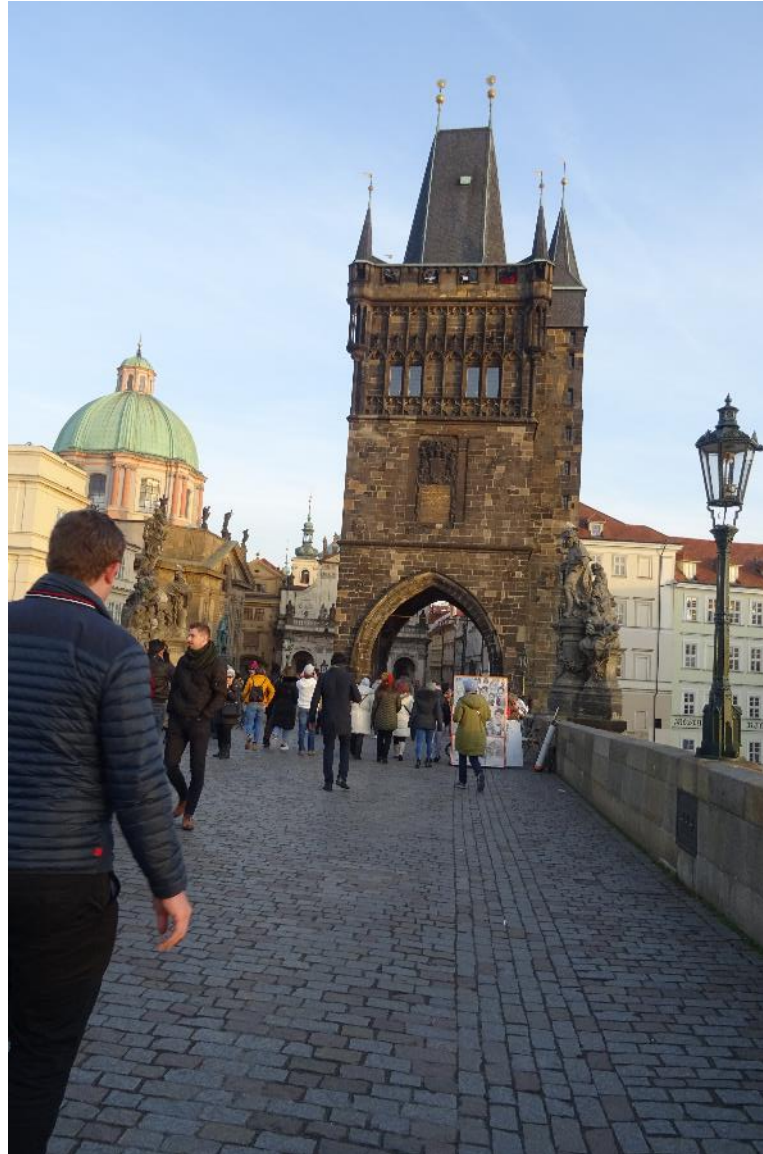
## Praha – view to the historical parts of the city



Pictures taken by Harald Schwarz and other excursion participants, maps are taken from BING



## Praha – reaching the entrance to the historical part of the city



Pictures taken by Harald Schwarz and other excursion participants, maps are taken from BING



## Praha – old town



Pictures taken by Harald Schwarz and other excursion participants, maps are taken from BING



## Praha – old town



Pictures taken by Harald Schwarz and other excursion participants, maps are taken from BING





Pictures taken by Harald Schwarz and other excursion participants, maps are taken from BING

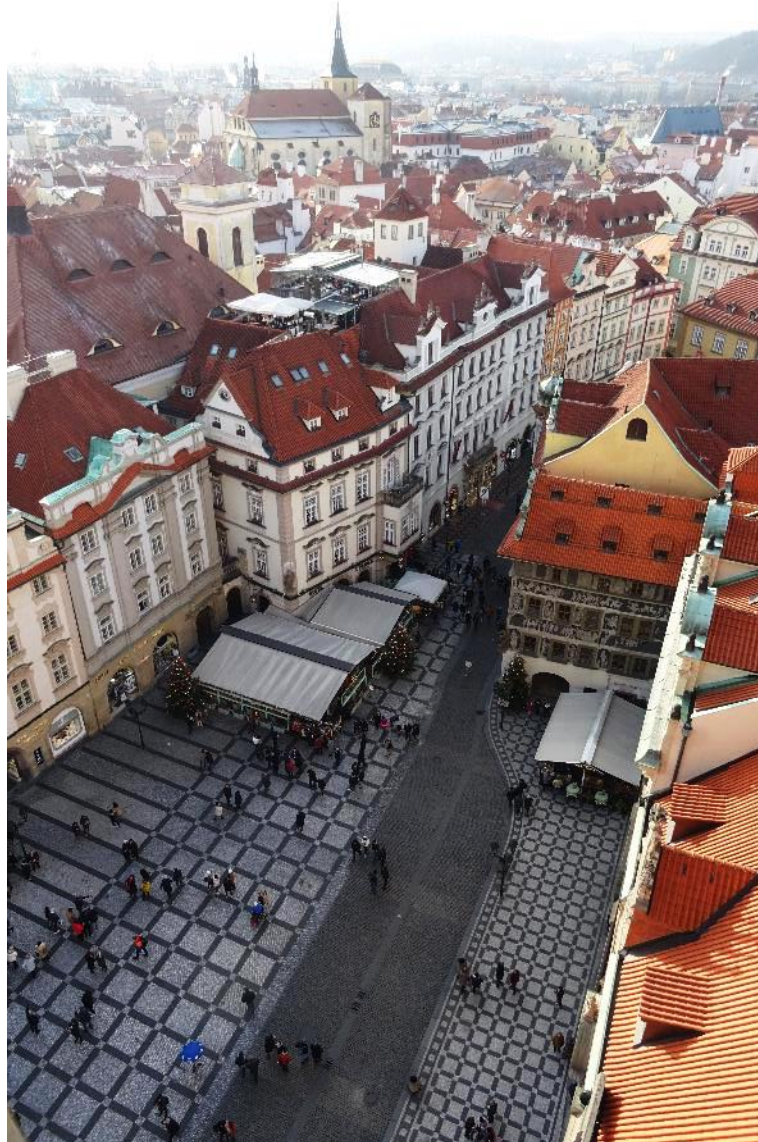


## Praha – old town





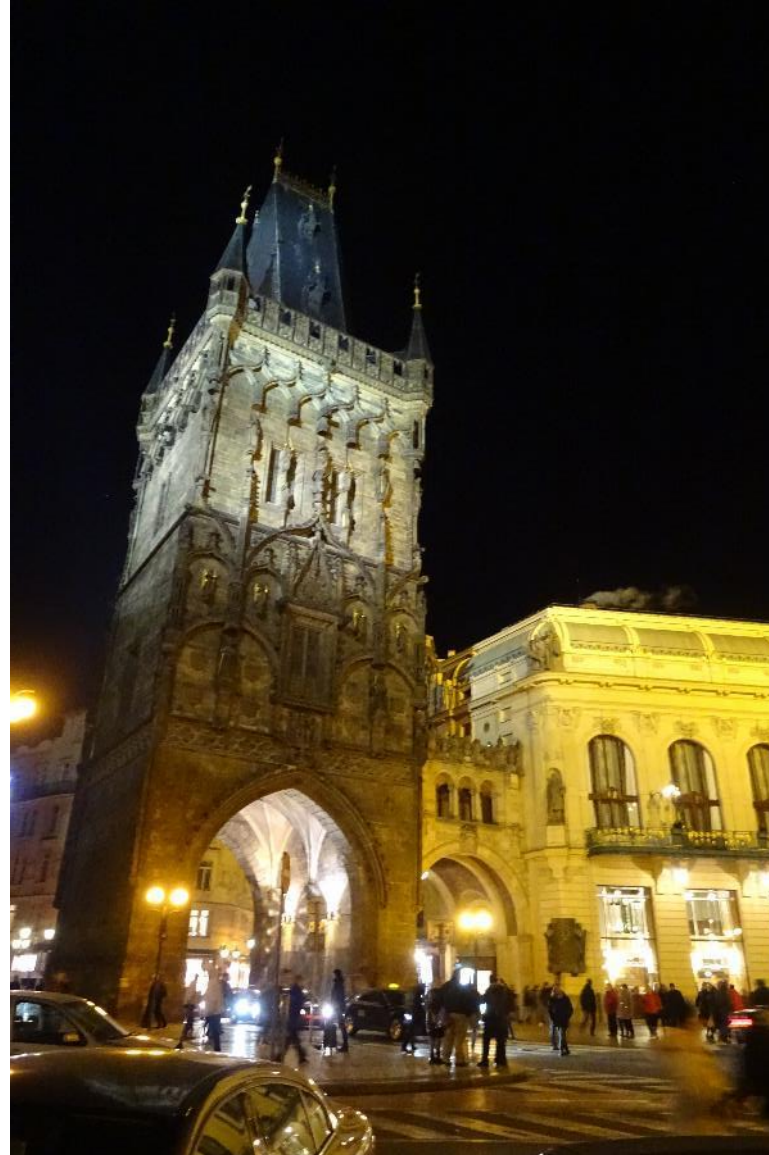
## Praha – old town



Pictures taken by Harald Schwarz and other excursion participants, maps are taken from BING



## Praha – old town



Pictures taken by Harald Schwarz and other excursion participants, maps are taken from BING

Let's go ahead to the next destination



## Plzen

As part of the excursion in 2009 we also made a stop over in Plzen, to visit the famous brewery. Unfortunately all the photos taken during this excursion disappeared. I only can show you so pictures from the internet, so that you can get an impression of this beautiful city.



Pictures taken by Harald Schwarz and other excursion participants, maps are taken from BING



## Karlovy Vary

As part of the excursion in 2009 we also made a stop over in Karlovy Vary. Unfortunately all the photos taken during this excursion disappeared. I only can show you so pictures from the internet, so that you can get an impression of this beautiful city.



Pictures taken by Harald Schwarz and other excursion participants, maps are taken from BING





Pictures taken by Harald Schwarz and other excursion  
participants, maps are taken from BING