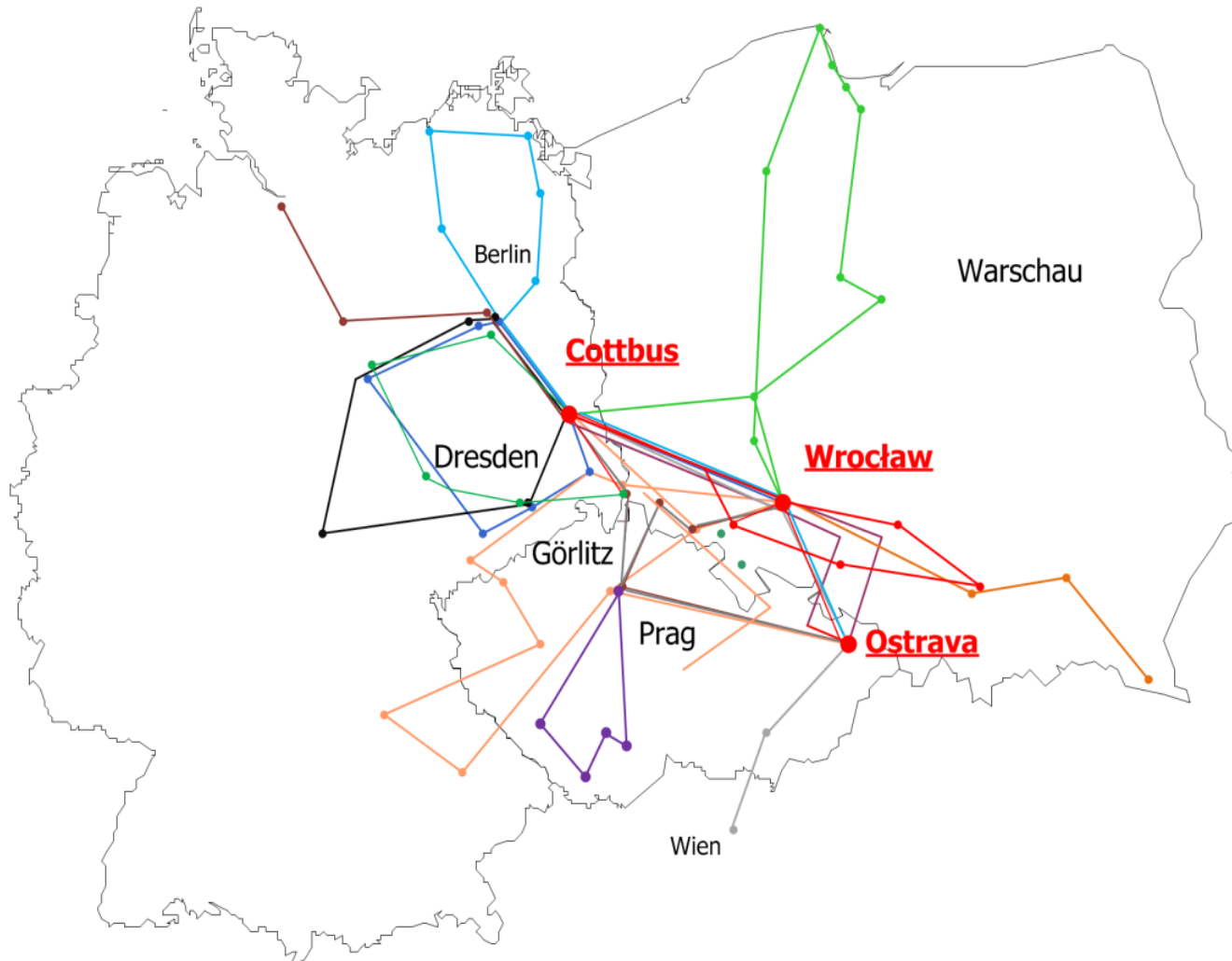


# City of Wroclaw and WUT – Wroclaw University of Technology

- 1<sup>st</sup> EEEIC 2002
- 2<sup>nd</sup> EEEIC 2003
- 3<sup>rd</sup> EEEIC 2004
- 4<sup>th</sup> EEEIC 2005
- 5<sup>th</sup> EEEIC 2006
- 6<sup>th</sup> EEEIC 2007
- 7<sup>th</sup> EEEIC 2008
- 8<sup>th</sup> EEEIC 2009
- 9<sup>th</sup> EEEIC 2010
- 10<sup>th</sup> EEEIC 2011
- 11<sup>th</sup> EEEIC 2012
- 12<sup>th</sup> EEEIC 2013
- 13<sup>th</sup> EEEIC 2014
- 14<sup>th</sup> EEEIC 2015
- 15<sup>th</sup> EEEIC 2016
- 16<sup>th</sup> EEEIC 2017



Since 2002 the BTU Dept. of Energy Distribution and High Voltage Engineering and our colleges from the Universities of Technology in Wroclaw and Ostrava organize a technical excursion with a student group from all three universities either in Germany, in Poland or in Czech Republic.

Pictures from these excursions were combined with pictures taken from several business or tourist trips.

Beside our outgoing students from MSc Power Engineering also the students, who will join these excursions every year, will find here some more detailed presentation grouped in:

- City of Wroclaw and WUT-Wroclaw University of Technology
- The Central and the Northern Part of Poland
- The Southern Part of Poland with a loop through Czech Republic – part 1
- The Southern Part of Poland with a loop through Czech Republic – part 2

Wrocław is a city in southwestern Poland and the largest city in the historical region of Silesia. It lies on the banks of the River Oder in the Silesian Lowlands of Central Europe, roughly 350 kilometres from the Baltic Sea to the north and 40 kilometres from the Sudeten Mountains to the south. The official population of Wrocław in 2020 was 643,782, with a further 1.25 million residing in the metropolitan area.

Wrocław is the historical capital of Silesia and Lower Silesia. Today, it is the capital of the Lower Silesian Voivodeship. The history of the city dates back over a thousand years; at various times, it has been part of the Kingdom of Poland, the Kingdom of Bohemia, the Kingdom of Hungary, the Habsburg Monarchy of Austria, the Kingdom of Prussia and Germany. Wrocław became part of Poland again in 1945 as part of the so-called Recovered Territories, the result of extensive border changes and expulsions after the Second World War.

Wrocław is a university city with a student population of over 130,000, making it arguably one of the most youth-oriented cities in the country. Since the beginning of the 20th century, the University of Wrocław, previously Breslau University, has produced 9 Nobel Prize laureates and is renowned for its high quality of teaching. Wrocław also possesses numerous historical landmarks, including the Main Market Square, Cathedral Island and the Centennial Hall, which is listed as a UNESCO World Heritage Site.

Taken from Wikipedia

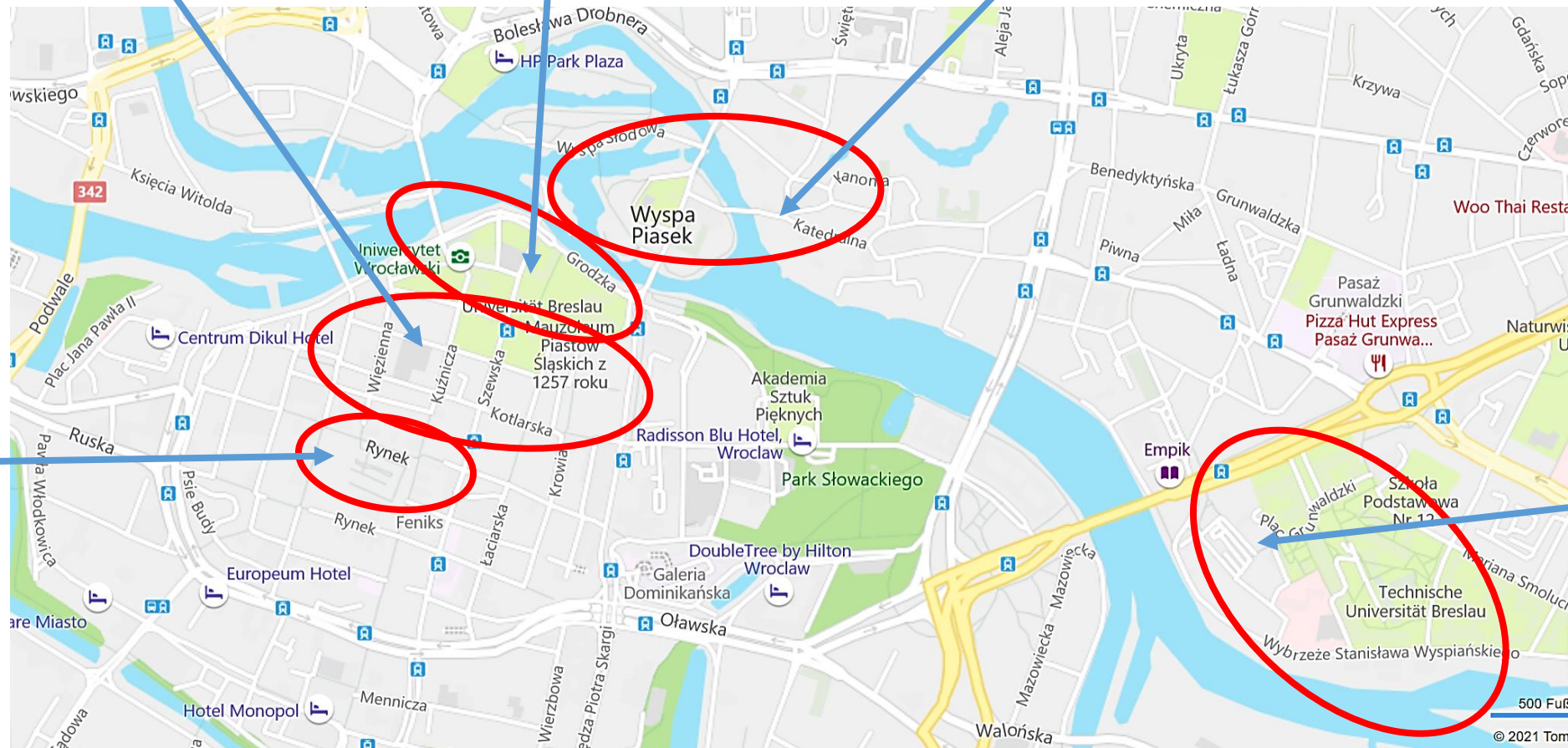
Old Wroclaw between the University  
and the old market

Wroclaw University

Wroclaw Cathedrale

Wroclaw old  
market

Wroclaw University  
of Technology





## Our Hostel / Hotel in Wroclaw

When we stay in Wroclaw with our excursion group we normally book it to Tumski Hotel, which is located about 1 north of the old market square. Hotel Tumski is a mixture of Youth Hostel, offering rooms with 4-6 beds and hotel offering 1-2 bed rooms

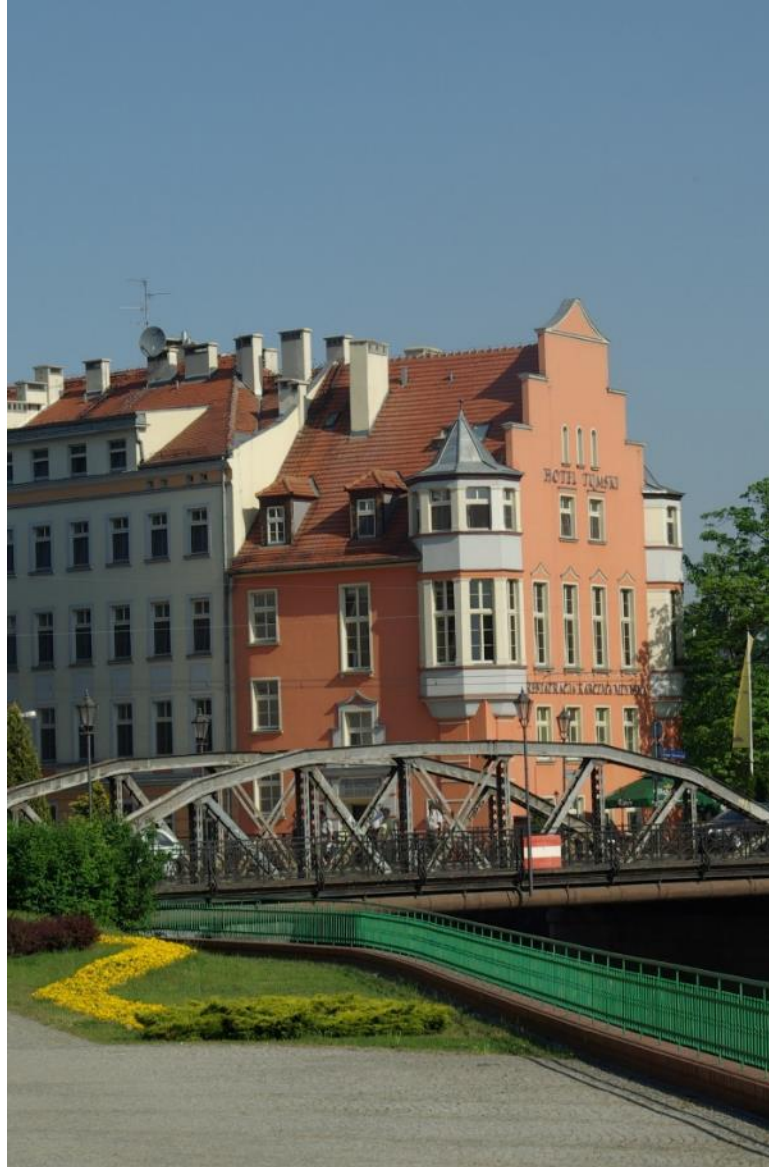




## Our Hostel / Hotel in Wroclaw



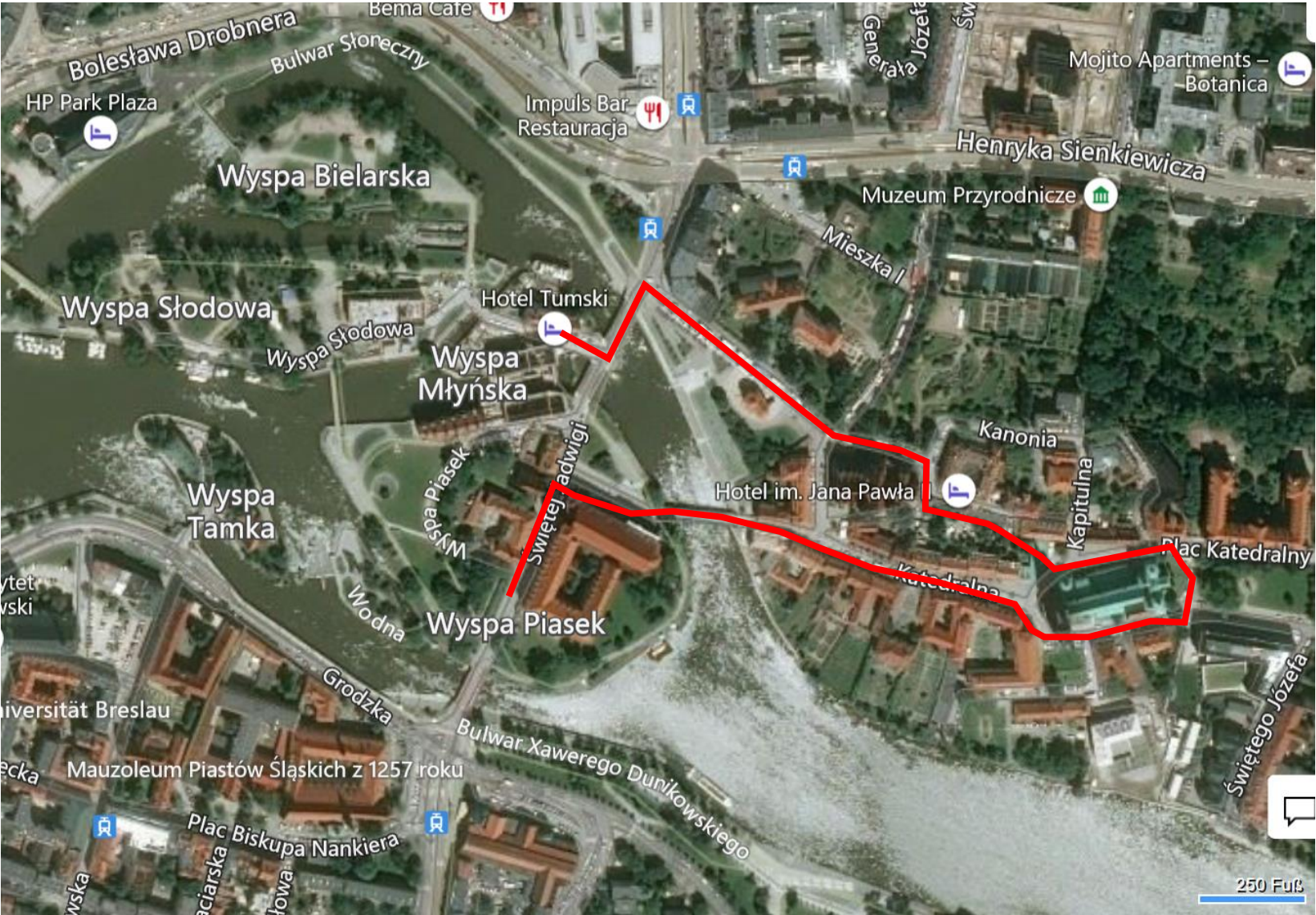
## Hotel Tumski



Pictures taken by Harald Schwarz and other excursion participants, maps are taken from BING



Let's start with the city tour to Wroclaw Cathedral



Pictures taken by Harald Schwarz and other excursion participants, maps are taken from BING



## Let's start with the city tour to Wroclaw Cathedral



Pictures taken by Harald Schwarz and other excursion participants, maps are taken from BING



Let's start with the city tour to Wroclaw Cathedral



Pictures taken by Harald Schwarz and other excursion participants, maps are taken from BING



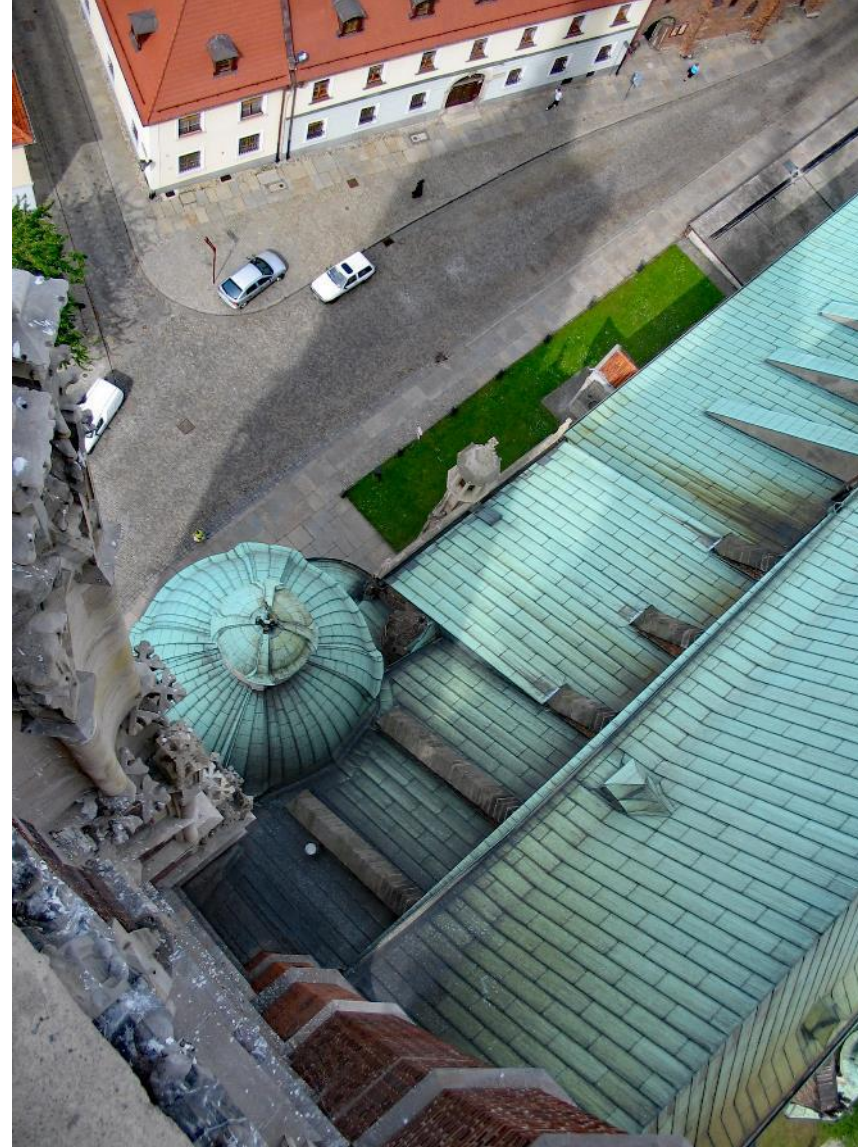
# The view from the Cathedral towards the city of Wroclaw



Pictures taken by Harald Schwarz and other excursion participants, maps are taken from BING



## The view from the Cathedral towards the city of Wroclaw



Pictures taken by Harald Schwarz and other excursion participants, maps are taken from BING



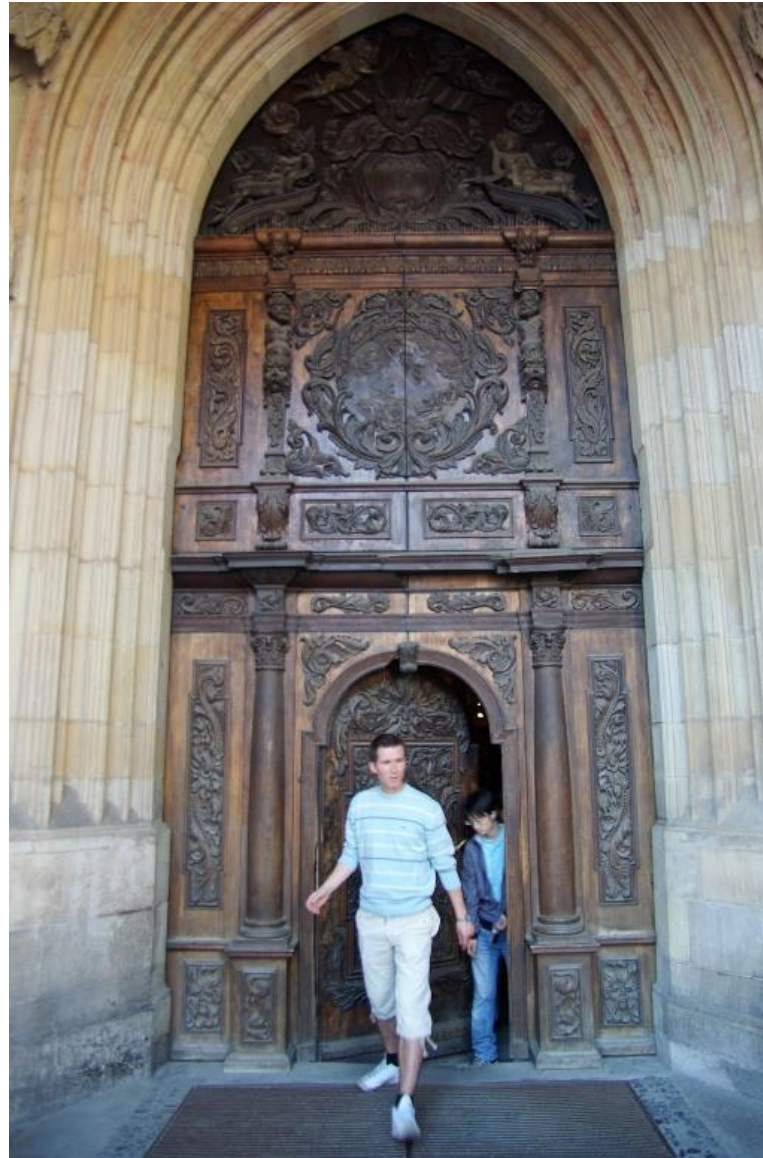
## The view from the Cathedral towards the city of Wroclaw



Pictures taken by Harald Schwarz and other excursion participants, maps are taken from BING



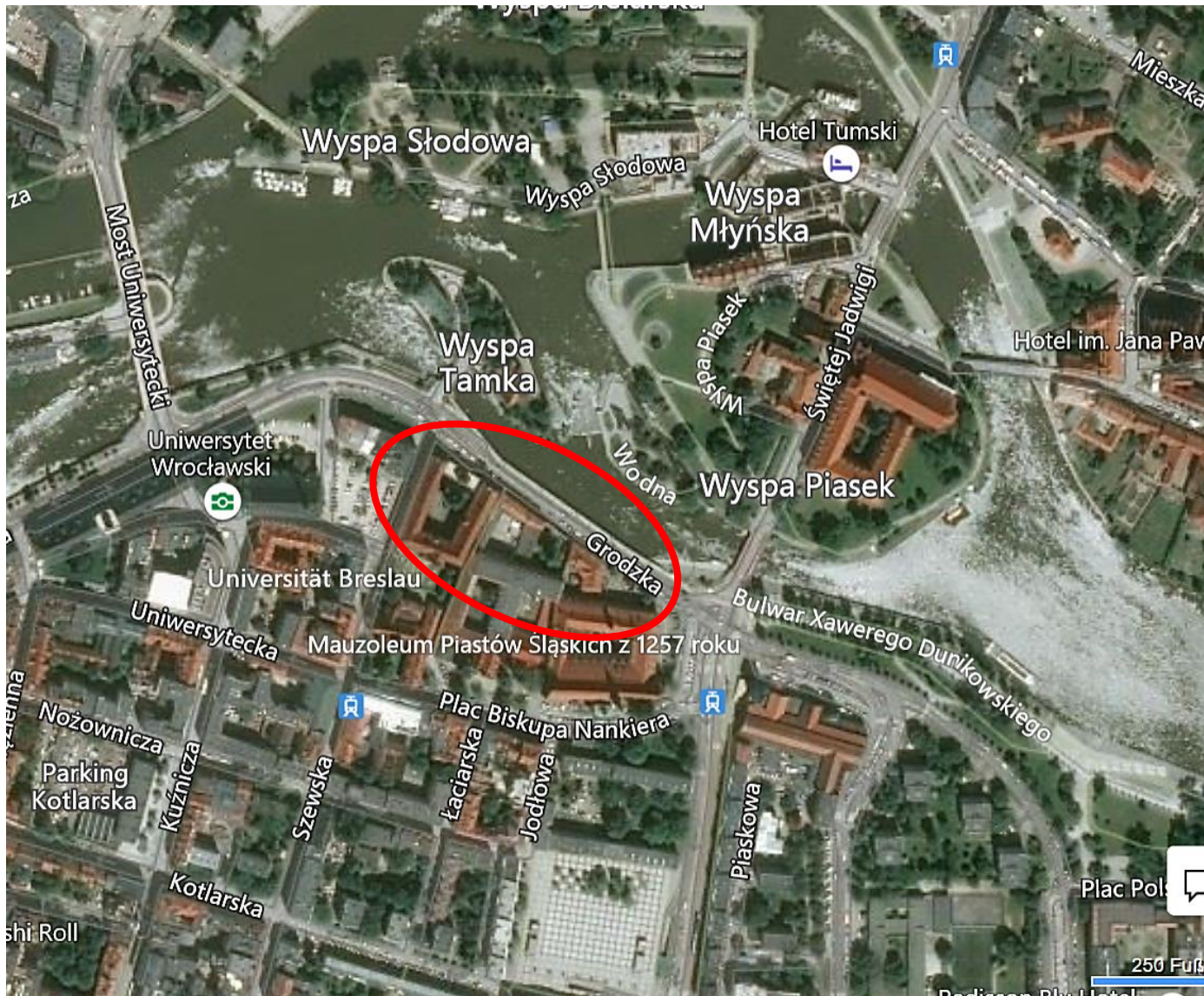
## Let's start with the city tour to Wroclaw Cathedral



Pictures taken by Harald Schwarz and other excursion participants, maps are taken from BING



## Wroclaw University (different to Wroclaw University of Technology)



Pictures taken by Harald Schwarz and other excursion participants, maps are taken from BING





Entering the Main Building to see Aula Leopoldina  
built from 1728 - 1732



Pictures taken by Harald Schwarz and other excursion  
participants, maps are taken from BING



Stair house to Aula Leopoldina







Pictures taken by Harald Schwarz and other excursion participants, maps are taken from BING





Pictures taken by Harald Schwarz and other excursion participants, maps are taken from BING





Pictures taken by Harald Schwarz and other excursion participants, maps are taken from BING

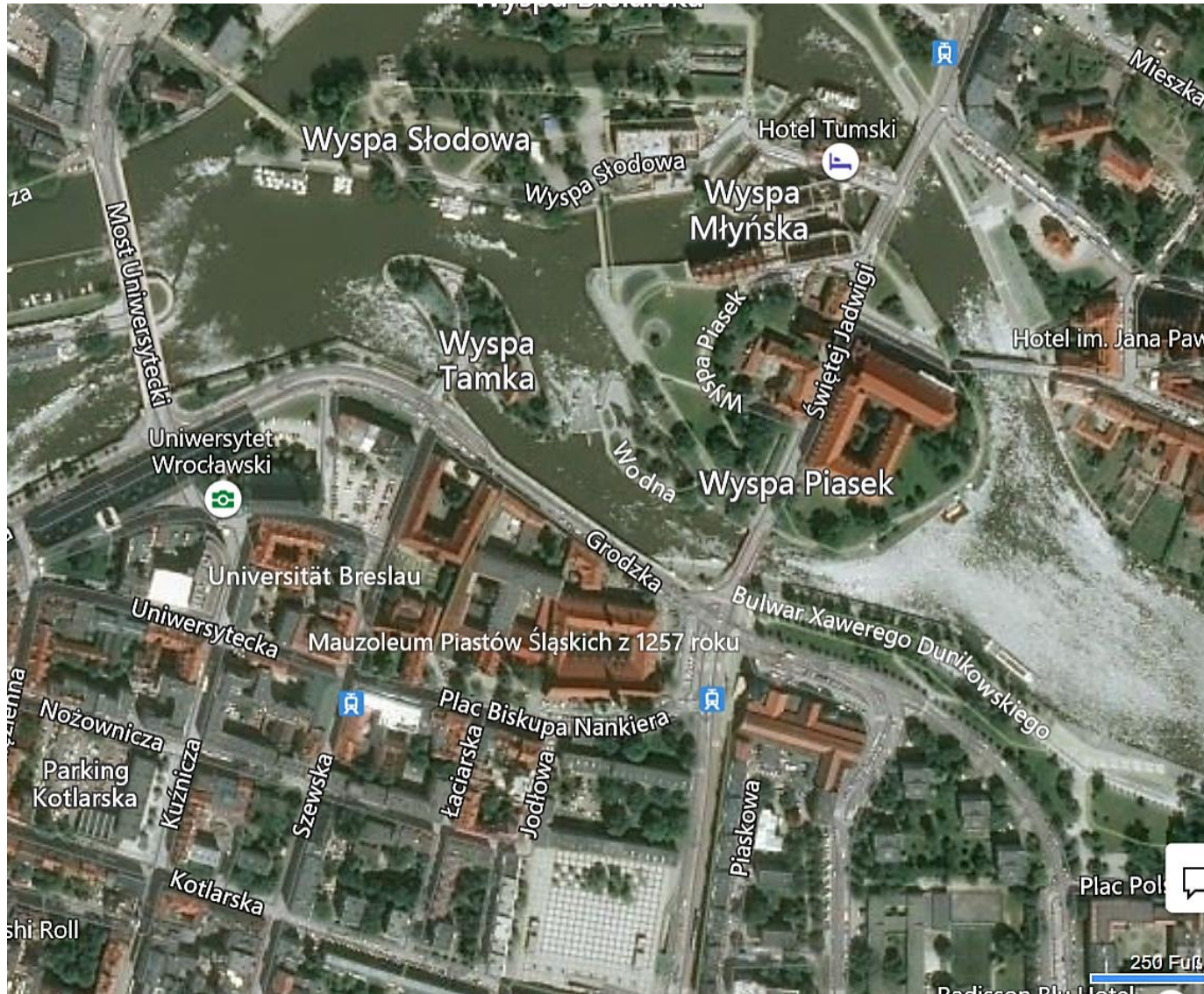




Pictures taken by Harald Schwarz and other excursion participants, maps are taken from BING



## Floods at River Odra in Wrocław



Pictures taken by Harald Schwarz and other excursion participants, maps are taken from BING



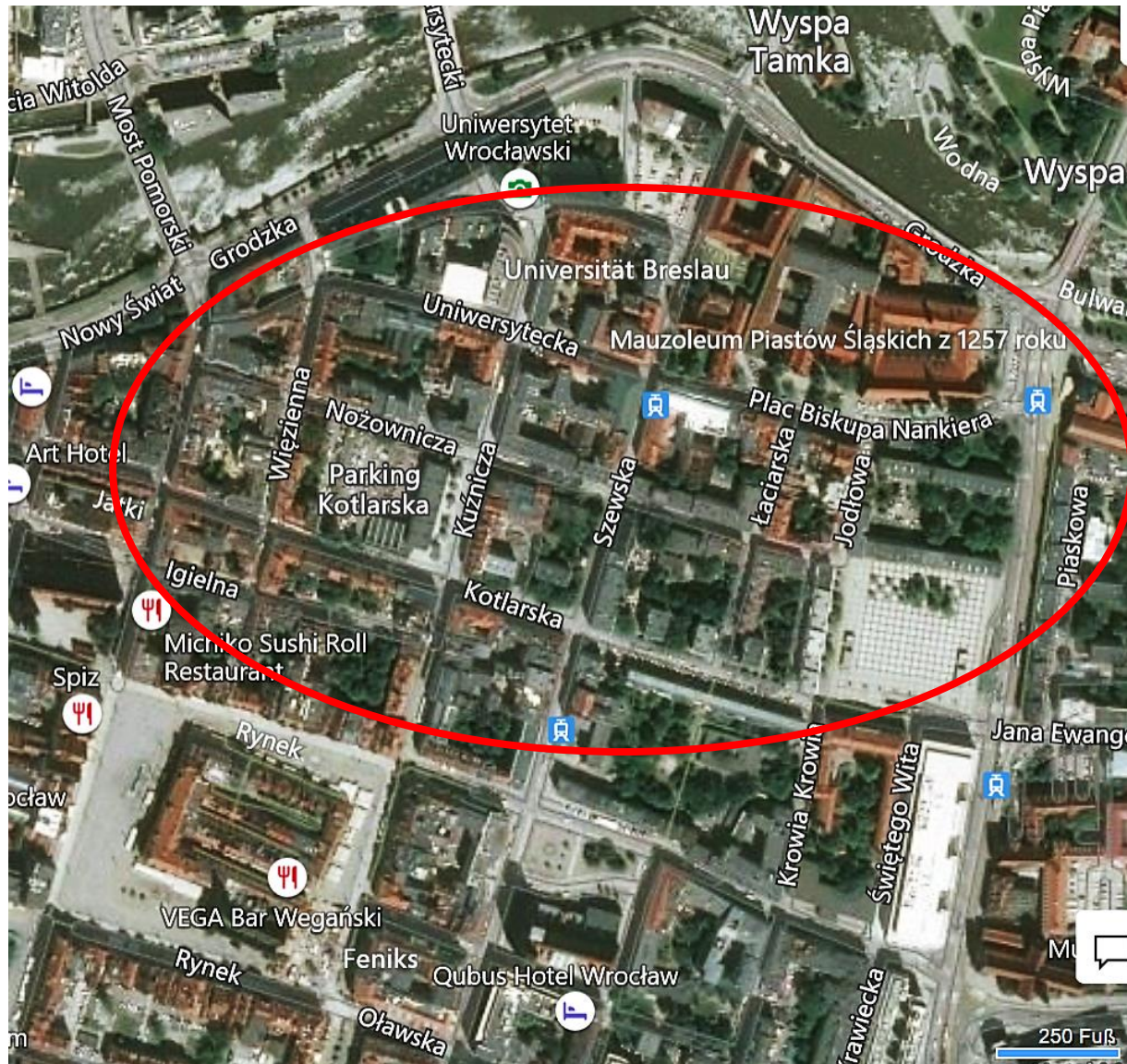
## Floods at River Odra in Wroclaw



Pictures taken by Harald Schwarz and other excursion participants, maps are taken from BING



## The Quarter between Wrocław University and the Old Market (Rynek)



Pictures taken by Harald Schwarz and other excursion participants, maps are taken from BING



## The Quarter between Wroclaw University and the Old Market (Rynek)



Pictures taken by Harald Schwarz and other excursion participants, maps are taken from BING



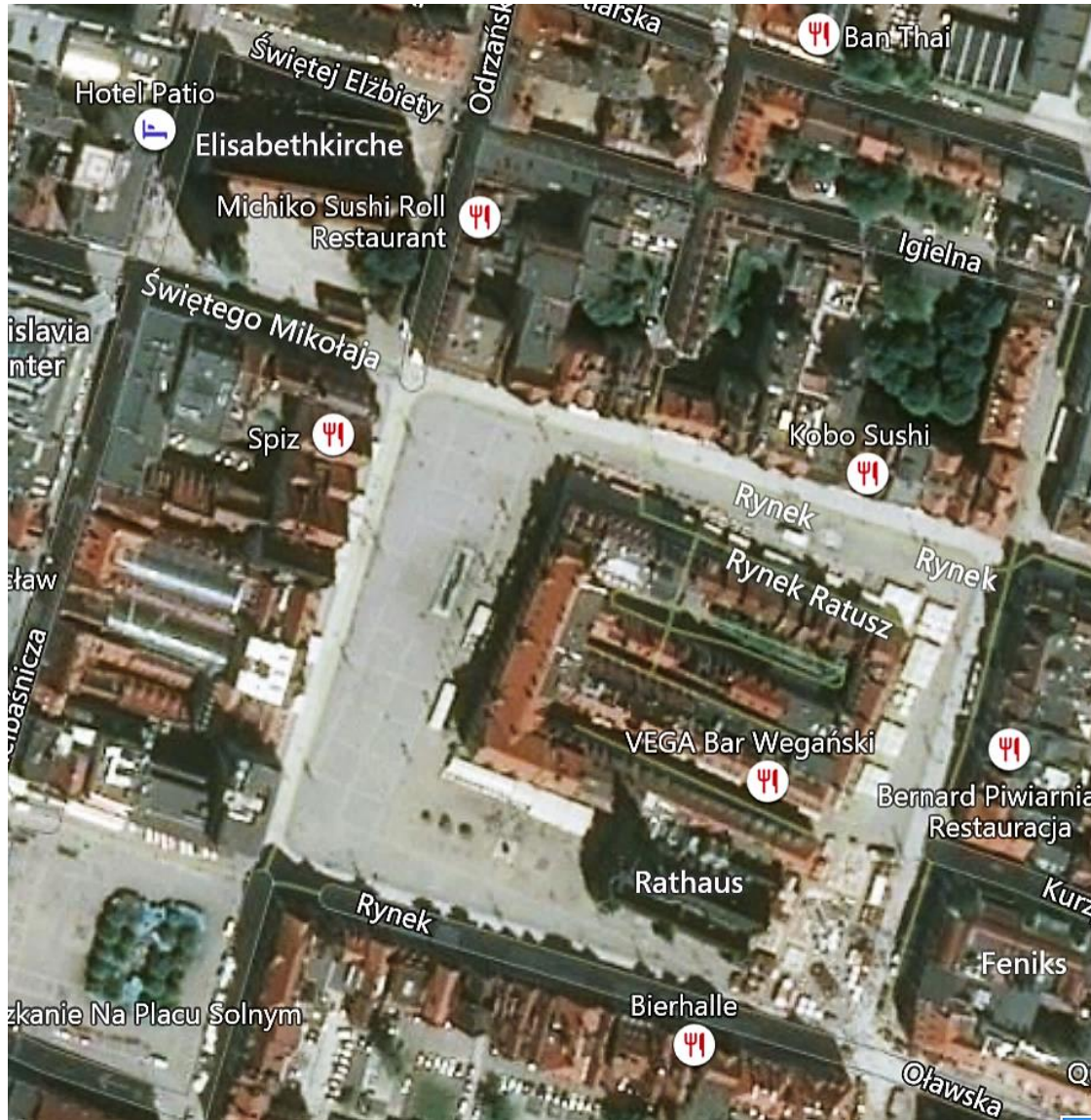
## The Quarter between Wroclaw University and the Old Market (Rynek)



Pictures taken by Harald Schwarz and other excursion participants, maps are taken from BING



# The Old Market (Rynek)



Pictures taken by Harald Schwarz and other excursion participants, maps are taken from BING



## The Old Market (Rynek)



Pictures taken by Harald Schwarz and other excursion participants, maps are taken from BING



## The Old Market (Rynek)



Pictures taken by Harald Schwarz and other excursion participants, maps are taken from BING



## The Old Market (Rynek)



Pictures taken by Harald Schwarz and other excursion participants, maps are taken from BING



## The Old Market (Rynek)



Pictures taken by Harald Schwarz and other excursion participants, maps are taken from BING



## The Old Market (Rynek) and more.....



Pictures taken by Harald Schwarz and other excursion participants, maps are taken from BING



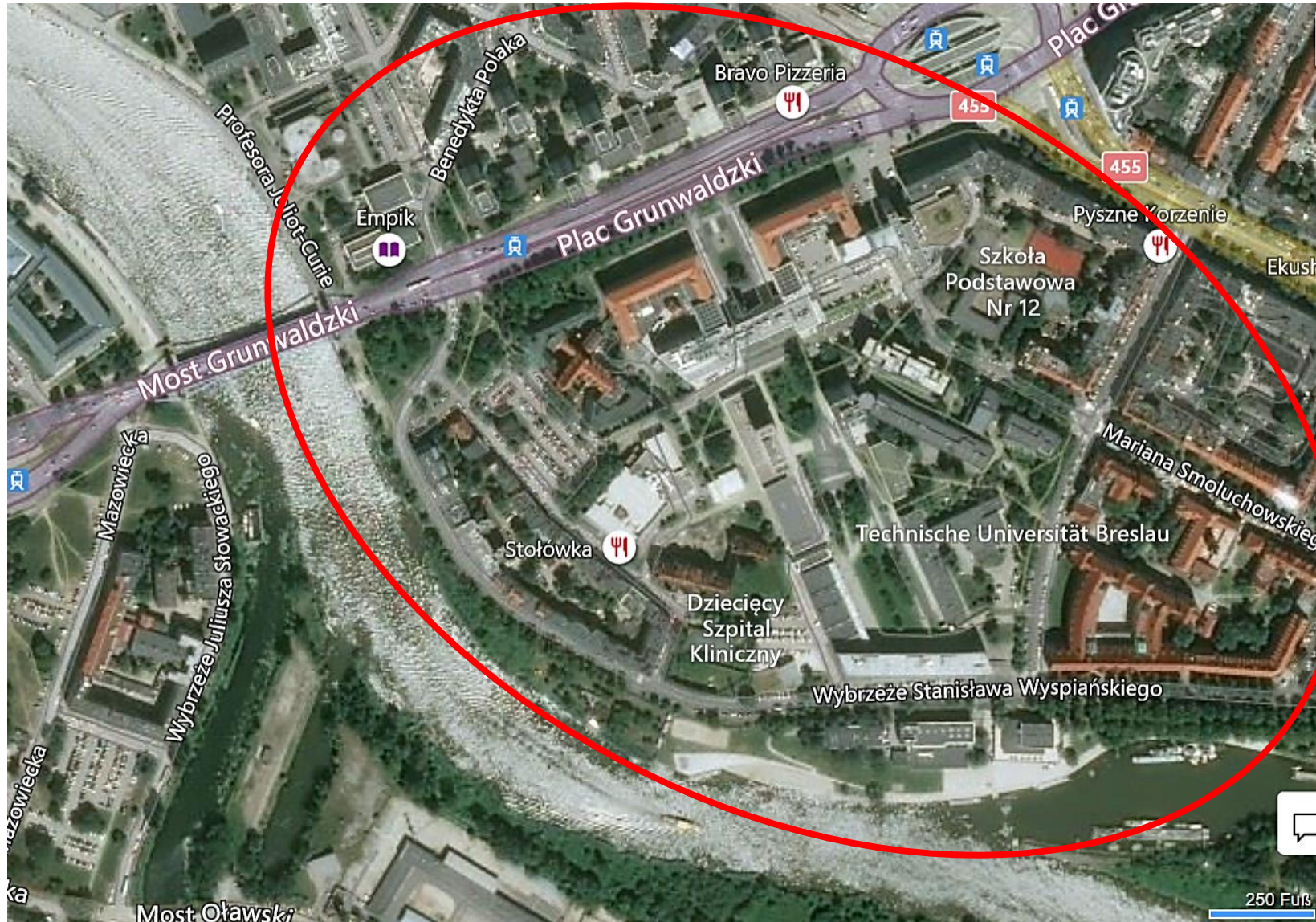
## The Quarter close to Wroclaw University of Technology



Pictures taken by Harald Schwarz and other excursion participants, maps are taken from BING



# The Campus of Wroclaw University of Technology



Pictures taken by Harald Schwarz and other excursion participants, maps are taken from BING



# The Campus of Wroclaw University of Technology



Pictures taken by Harald Schwarz and other excursion participants, maps are taken from BING



# The Campus of Wroclaw University of Technology



Pictures taken by Harald Schwarz and other excursion participants, maps are taken from BING



# The Campus of Wroclaw University of Technology



Pictures taken by Harald Schwarz and other excursion participants, maps are taken from BING





Pictures taken by Harald Schwarz and other excursion participants, maps are taken from BING





Pictures taken by Harald Schwarz and other excursion participants, maps are taken from BING



Before we start with our technical excursions in Wroclaw let's have a break in the student rowing club on the banks of river Odra



Pictures taken by Harald Schwarz and other excursion participants, maps are taken from BING





Pictures taken by Harald Schwarz and other excursion participants, maps are taken from BING



## A Technical Visit within BOMBARDIER, Wroclaw



Bombardier is the largest international rail transportation investor in Poland. It has more than 2,000 employees in Katowice, Lodz, Warsaw and Wrocław. Its wide range of business activities includes:

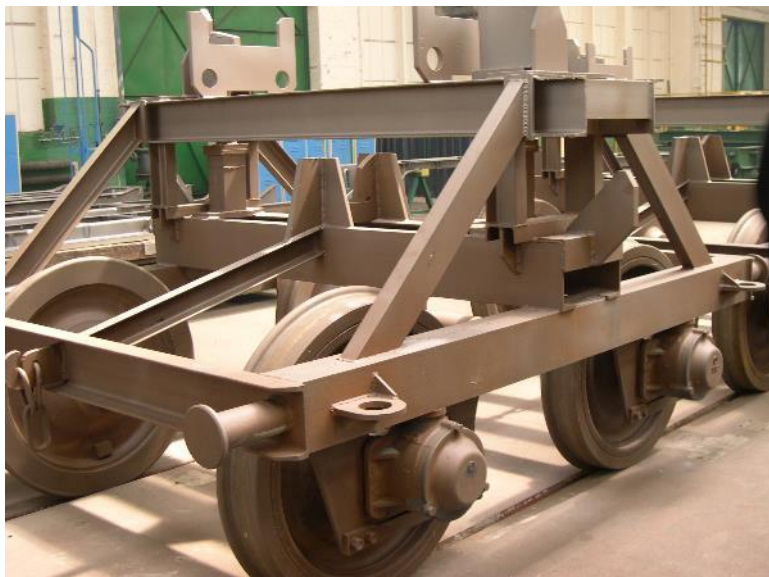
- Production of locomotive and passenger vehicle car bodies, including high-speed vehicles, bogie frames for high-speed trains, regional multiple units, trams and metro cars
- Design and production of rail control and signaling systems
- Production of electric devices and equipment
- Maintenance services for rail control solutions and rolling stock

Pictures taken by Harald Schwarz and other excursion participants, maps are taken from BING





## A Technical Visit within BOMBADIER, Wroclaw



Pictures taken by Harald Schwarz and other excursion participants, maps are taken from BING





Pictures taken by Harald Schwarz and other excursion participants, maps are taken from BING



## A Technical Visit within BOMBARDIER, Wroclaw



Pictures taken by Harald Schwarz and other excursion participants, maps are taken from BING













Pictures taken by Harald Schwarz and other excursion  
participants, maps are taken from BING