

Shanghai University of Electric Power (SUEP)



Shanghai University of Electric Power, founded in 1951, is a full-time institution of higher education, co-run by the central government and Shanghai Municipality, and managed mainly by Shanghai Municipality. The university has three campuses. Pingliang Campus, the main campus of the university, is located near Yangpu Bridge in the eastern urban district of Shanghai. The university has a quiet and peaceful environment and has convenient transportation facilities. The other campuses are respectively in Pudong Science and Education Town and the East Guoshun Road. At present, the total area of the university is nearly one thousand Chinese mu (around 67 hectares). The university currently has ten thousand full-time students. A large number of graduates are working on the mainstay posts of production, operation, and management in the electric power systems of China.

The university has 35 fundamental and professional labs and 12 research offices. Among them is the ministerial key laboratory of Corrosion and Protection of Thermal Power Equipment from the State Grid Corporation of China. The major, power plant of thermal energy power and environment engineering, has been rated as the key cultivation of subjects for the Shanghai Educational Committee.

There are more than 700 staff members in the Shanghai University of Electric Power. Among them, there are about 150 professors and associate professors. In addition, the university has invited scores of well-known scholars and experts with domestic and international fame as honorary visiting or part-time professors.

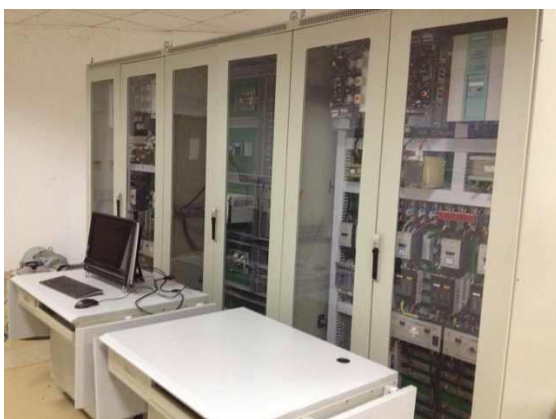
Description of Cooperating Departments

The College of Electric Power and Automation Engineering has two departments, which are Electric Power Engineering and Automation Control. The college has two experiment centers, namely Electric Power and its Automation, Electrical Engineering and Electron, as well as a research institute of Electrical Science and Technology. There are 13 professors and 28 associate professors in the College.



Building of a Lab

This college offers studies that have great strength in research and development of the following areas: Layout and Design of Electric Networks, Wind power grid and control technology, Intelligent electricity and Micro-grid technology, Analysis and Control of Electric Power Systems, Monitor and Diagnosis of Electronic Equipment, Quality Analysis and Control of Electric Energy, Evaluation and Transformation of Electric Power Systems, and Trouble Orientation of Transmission Lines. Among them, part of the research directions are lead in China. During the last five years, the College has taken on more than 200 scientific research projects which include National “863” Projects, the Shanghai Key Scientific and the Technological Tackling Projects, the Shanghai Natural Science foundation Projects. The College has been awarded 8 accomplishment prizes for its education and scientific research from the Province or Ministry. It has taken on 4 projects of Shanghai Exquisite Course Construction and 8 projects of educational achievement from the Province or Ministry.



Renewable Energy and Smart Grid Lab Center

The College focuses on students' overall quality, innovative spirit and practical abilities. College students have won several first and second prizes in the National College "Challenge Cup", the National College "Freescale Cup" smart car contest, the National Mathematical Modeling Contest, the Electronic Design Contest, the Creating and Innovation Cup.

During the 60 years of development, the College of Electrical Engineering has had the responsibility to cultivate excellent electrical engineers; the School has trained 20 000 of professional and technical personnel. At present most of them are playing an important role in the industry, and the college is known as the "cradle of power engineers".

Course Catalogue

Modules	Name of courses	Chinese Credits	ECTS Credits	Term
Degree Course (Required of all Graduate Students)	Numerical Calculation Methods	3	6	1
	Matrix Theory	3	6	1
Degree Course (Specialized)	Power System Analysis(1)	3	6	1
	Power System Analysis(2)	3	6	2
	Advanced Electric Power Network Analysis	3	6	1
	New Power Electronic Conversion Technology	3	6	1
	Modern Control Theory	3	6	1
	Modern Measurement and Control Techniques	2	4	2
	Digital Signal Processing	2	4	1
Elective Course (Specialized)	Power System Planning	2	4	2
	Power System Automation Technology	2	4	2
	Analysis of Alternative Current Machine and its System	2	4	2
	High Voltage Apparatus	2	4	1
	High Voltage Test Technique	2	3	2
	Digital Protective Relaying of Power System	2	4	2
	Power Electronic Applications in Power Systems	2	4	2
	Power System Simulation Software and Application	2	4	1
Elective Course (for all graduate students)	Optimization Methods	2	4	2

Services for International students

- 1) Pick-up from Shanghai Pudong International Airport;
- 2) Reservation of dormitory (ensures every exchange student has access to student dormitory) ;
- 3) Campus tour



Student dormitory



Sports playground

Culture Program and Leisure Activities

SUEP students also enjoy a rich campus life. Here they can take part in various student clubs and societies to meet new friends, find interests and improve their abilities. SUEP has almost 60 clubs and societies in 5 categories: Sports, Special Interests, Volunteer, Social Practice and Academics.



Various Evening Parties

Various types of Evening Parties are held every year by students themselves, which will let you experience special Chinese traditional festivals and performances.

The global trend in education is moving toward the integration and exchange of learning and understanding between university students from different countries. In order to strengthen this international exchange, Shanghai University of Electric Power warmly welcomes international friends and overseas Chinese to come to our university to learn the Chinese language, understand the Chinese culture and study for bachelor and master degrees.