

## WORKSHOP PROGRAMME

**Heritage for Tomorrow**  
**Workshop on Integrated Urban Rehabilitation**  
Port Said, Egypt – July 6<sup>th</sup> to 16<sup>th</sup>, 2024.

Photo by: Ahmed Adham

## BACKGROUND

### ■ Introduction to the Project

This workshop is planned as the fourth event of the "Bazar Abbas: Recovery Lab of Port Said" project, aiming to enhance capacity for integrated urban conservation and development of Port Said. This project is a two-year initiative led by BTU in partnership with Galala University, Al Yakaniya for Heritage and Arts, Port Said Ala Ademo and Alliance française de port-saïd. It is funded by the British Council's Cultural Protection Fund in partnership with the Department for Digital, Culture, Media and Sport.

The project's objective is to address the effect of wars and conflicts in Port Said over the past decades and activate the recovery process of the downtown area through the implementation of small-scale, people-centred strategies for urban conservation and development. Given the intricate nature of the urban context, the project focuses on Bazar Abbas as an entry point. This building holds significant architectural heritage, intertwined with the historic development of the city, and plays a crucial role in the collective memory and identity of Port Said residents, symbolizing resistance, displacement, and daily practices.

The project involves a series of training and workshops that build upon each other. The first workshop delved into site-specific studies in Port Said's Arab and European neighbourhoods, focusing on understanding how war and conflict have shaped local urban narratives and heritage interpretations. Central to this exploration was the timber veranda, or *Taracina*, a key element of Port Said's architecture. The second workshop concentrated on envisioning diverse scenarios for recovery of Port Said's urban core. Participants explored experimental design, heritage-led regeneration, critical reconstruction, climate-adaptive design, and socio-economic regeneration strategies. In the third workshop, participants underwent architectural conservation and reconstruction training, renovating two *taracinas* (balconies) and a section of the eastern façade of Bazar Abbas. The insights and outcomes collected from these workshops will be shared with current participants to deepen their contextual understanding and prepare them for subsequent work.



Fig 1. View to Entrance of Bazar Abbas – 19.12.2022 © Sepideh Zarrin Ghalam



## BACKGROUND

### ■ Introduction to Port Said

Port Said is a city located in north-eastern Egypt, strategically positioned at the entrance of the Suez Canal, which greatly influenced its historic development. Founded in 1859, it was envisioned as a vital trade hub connecting Europe, Asia and Africa. The city flourished as an international port, attracting diverse communities and cultures and displaying a distinctive architecture that reflects a blend of European and Egyptian influences. While Port Said is often celebrated for its cosmopolitan era and the cultural exchange between Europeans and Arabs, it is essential to acknowledge that the colonial nature of Port Said's urban planning and the enforced segregation between Arabs and Europeans have significantly shaped the city's urban landscape, leading to persistent and recurring urban complications that have not adequately addressed nor fully resolved.

The historic core of Port Said was divided into two distinct neighbourhoods. Al-Afrang, designed for the European population with wide boulevards, elegant buildings, and spacious garden. Conversely, Al-Arab was planned for the local Arab population, with a simpler gridiron structure, narrow streets, small building plots and lacking public spaces. This division between European and Arab districts epitomized the social and cultural divisions of the colonial period, with Europeans enjoying greater privileges and resources. However, despite urban limitation, the lively and vibrant Arab quarter never stropped to express its identity through cultural, religious, and political means.

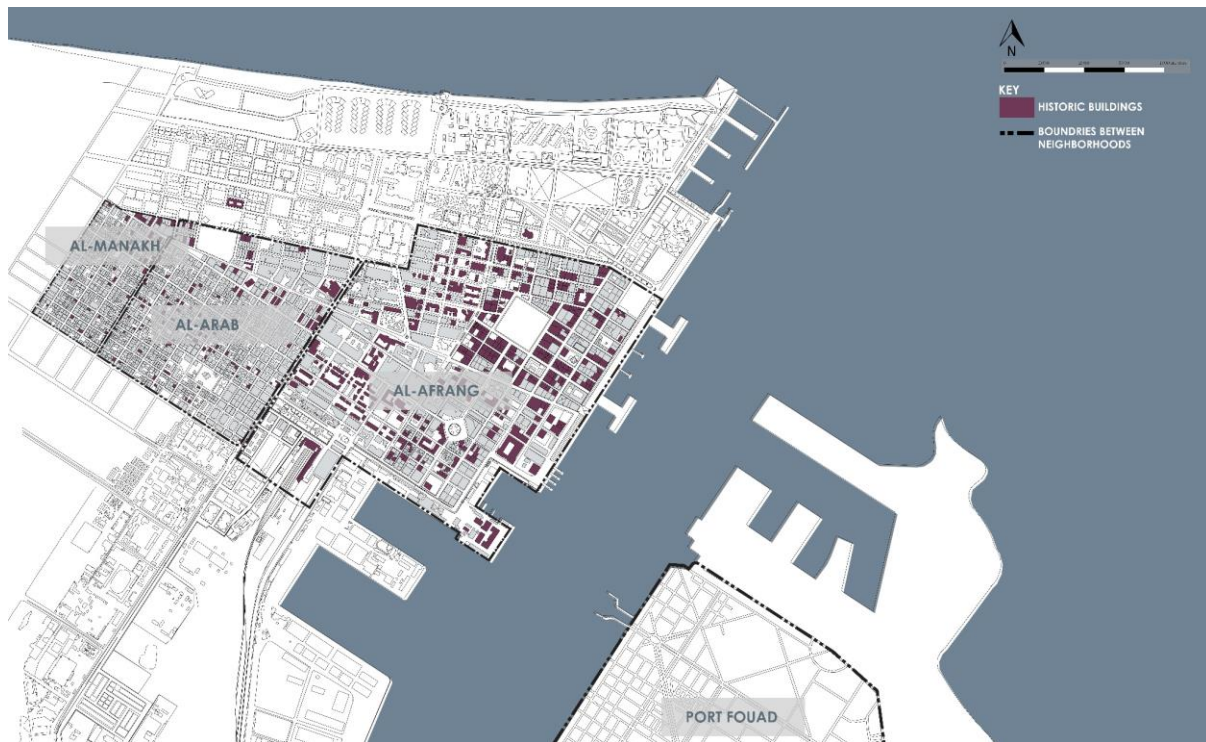


Fig 2. Heritage areas, buildings and boundaries © Samar Abdelaal

Throughout its history, Port Said faced challenging political and economic circumstances, including two World Wars, the Suez Crisis in 1956, the Six-Day War in 1967, the October War in 1973, the declaration of a free zone, and the 2011 revolution. While the city's urban structure and street patterns have remained unchanged, the social fabric and economic conditions have undergone significant transformations. Presently, Port Said is predominantly inhabited by a Muslim majority of Egyptian descent, political conflicts have diminished and social divisions have started to mend. Nonetheless, the memories of segregation, anti-colonial sentiments, and a lingering sense of

## BACKGROUND

resentment towards foreign influence remain deeply ingrained in the collective memory of the city's residents.

Port Said's architectural and urban heritage is currently facing significant challenges due to a lack of effective conservation measures. The modern architectural heritage of the city stands as a testament to its complex history, reflecting both prosperity and cosmopolitanism, as well as the deep-seated issues of segregation and oppression. To address these aspects, it is crucial to implement community-led and integrated urban conservation measures that align with the city's sustainable development goals. Without such measures in place, the existing limited protection laws prove inadequate in the face of mounting developmental pressures, exacerbated by real estate investments.

The importance of community-led development is further underscored by the presence of Port Said's robust intangible heritage, which has endured throughout its history. While tangible heritage represents the physical remnants of the city's past, it is the intangible heritage that animates the community, fostering a sense of belonging and continuity. Therefore, comprehensive efforts towards the recovery and eventual regeneration of Port Said should encompass a holistic understanding of both the tangible and intangible heritage, recognizing their interrelation with the city's spatial configuration.

### ▪ Introduction to Bazar Abbas

Bazar Abbas is an outstanding example of a hybrid between local architecture and European modernism. This architectural typology can be seen in various shapes and forms throughout the city of Port Said. Like many other structures of the same period, Bazar Abbas suffers from absence of protective measures and is under pressure from incompatible development forces. Bazar Abbas has been striving to establish its identity since the decline of Port Said's cosmopolitan culture and the socio-economic turbulences that followed. After the Arab-Israeli war, Bazar Abbas lost its main users, the international inhabitants. In 1956, the triple aggression in Port Said created an anti-colonization atmosphere that had a negative impact on its modern heritage. The turning point for Bazar Abbas occurred in the post-1976-war period when the urgent needs of newcomers led to the overpopulation of its first floor. The excessive use resulted in significant deterioration of the Bazar, which continued until 1980 when the government evacuated the building due to safety concerns. Since then, no protective measures have been implemented, leaving Bazar Abbas in a critical state. Today, the ground floor continues to be used as a marketplace and holds high importance for the local community.

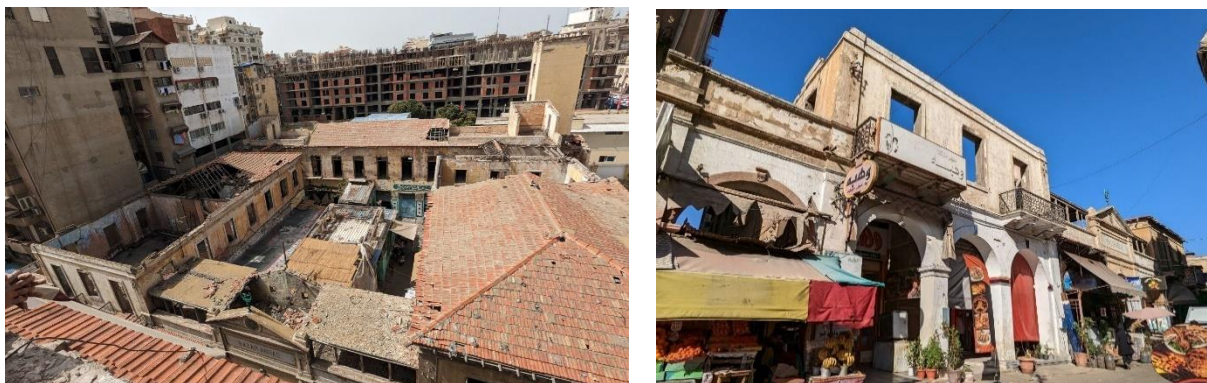


Fig 3. Left: Bazar Abbas from above, 19.12.2022, Right: Street view to Bazar Abbas -13.03. 023. © Sepideh Zarrin Ghalam

## WORKSHOP TASKS

---

The workshop aims to explore innovative strategies, tools and design proposals for the **rehabilitation of Bazar Abbas** and its surrounding neighbourhood. While our focal area is the Bazar Street in the European district, yet we will also pay attention to the relation between the Arab and European districts and their proximity and connectivity to the canal on one side and the seaside on the other.

Build upon the success of previous two workshops, our primary goal is to delve deeper into **urban design solutions** within the framework of **integrated urban development**. However, this time, our focus extends beyond mere recovery and place a strong emphasize on harnessing urban heritage for building a resilient and sustainable future. More specifically, we will explore the potential of **cultural tourism** in driving socio-economic development within our study area.

### *What is Integrated Urban development?*

The core aspects of the methodology of integrated urban development planning involve establishing common development goals and a unified vision for the city or district, based on a precise analysis of the current situation, and achieving consensus on this with the majority of stakeholders.

Measures and projects that can be implemented swiftly are then identified and developed within the framework of these development goals and the shared vision. When developing these actions and projects, it is important to identify responsible persons, establish realistic timeframes with milestones, and secure necessary funding sources for implementation.

In contrast to traditional master planning, integrated urban development planning is much more focused on the specific situations, conditions, and resources of the people involved. It is a bottom-up rather than a top-down strategy. To ensure all stakeholders are working towards the same objectives and to minimize competition and conflict between various projects and measures, it is essential they are based on common goals and a shared vision. Integrated urban development planning is also process-oriented, meaning that during the development process, the goals achieved and the steps taken are reviewed and, if necessary, adjustments are made.

This method will be applied in the workshop. Based on existing analyses and previously discussed objectives, the development goals and a common vision will be refined. Each working group will then develop specific projects and measures according to its thematic priorities. It will be particularly interesting to identify synergies between different themes to pinpoint areas ("fields of action") where success can be achieved most efficiently.

Participants will engage in intensive group exercises, diving into five thematic groups to address key areas relevant to our workshop's overarching goals. Emphasizing a **community-driven approach** throughout, we highlight the importance of engaging and empowering local communities as primary stakeholders in shaping their urban environment. Our objective is to formulate sustainable and inclusive urban strategies, tools and design solution that genuinely reflect the needs and values of the people who live and work in the neighbourhood.

## WORKSHOP TASKS

### KEY CRITERIA

1. Integrated Urban Development Framework: Emphasizing a holistic approach, highlighting the significance of coordinated strategies across diverse sectors, and fostering collaboration among stakeholders to achieve a shared vision.
2. Community-Driven Approach: Elevating the importance of engaging communities actively and empowering them to shape their urban environments.
3. Cultural Tourism as a Driver: Leveraging cultural tourism to boost the local economy and promote cultural exchange, while ensuring tourism development is respectful of local tradition and benefits of local community.
4. Sustainable Development Goals: Ensuring alignment with global sustainability targets in urban development strategies.
5. Heritage Preservation: Utilizing heritage assets to redefine the city's identity and envision its future.

Infrastructure  
&  
Sustainable  
Mobility

Built Heritage  
&  
Adaptive Reuse

Intangible  
Heritage  
&  
City Rebranding

Public Spaces  
&  
Environmental  
Sustainability

Cultural  
Tourism  
&  
Socio-economic  
Regeneration

Christoph  
Wessling (BTU)  
Maged Zagow  
(GU)

Alaa El Habashi  
Taymour Senbel  
(AU)  
Samar Abdelaal  
(BTU)

Port Said Ala  
ademo  
Zainab Tahoon  
(GU)  
Rawda Abdelhady

Simon Colwil  
(BTU/IU)  
Mohamed Hamdy  
(GU)  
Rasha Emad

Rasha Alkadi  
Sepideh Zarrin  
Ghalam( BTU)  
Passant Nurelding  
(tbc)

## WORKSHOP TASKS

### Infrastruture & Sustainable Mobility

- This group will assess the existing infrastructure and mobility patterns in Bazar Abbas and its surrounding neighborhoods through the lens of enhancing cultural tourism. They will identify opportunities for improvement of the existing infrastructure and public transportation networks to better serve residents and attract cultural tourists. strategies will include integrating sustainable mobility options that contribute to the areas's accessibility and connectivity, ensuring that urban rehabilitation supports both local needs and cultural tourism initiatives.

### Built heirtage & Adaptive reuse

- Focused on preserving and utilizing the built heritage of Port Said, this group will conduct a comprehensive inventory and assessment of architectural and historically significant buildings with an emphasis on enhancing cultural tourism. They will identify structures suitable for adaptive reuse projects and develop guidelines to ensure that new developments respect the area's architectural integrity. By promoting adaptive reuse, the group aims to leverage heritage assets to enrich the cultural tourism experience and redefine the neighbourhood's identity.

### Intagible Heritage & City Rebranding

- This group will engage in research and community consultations to identify and promote intangible cultural heritage elements significant to Port Said's identity, enhancing their integration into urban design and public spaces to enrich cultural tourism. They will focus on safeguarding traditional crafts, rituals, and oral traditions through strategies that foster community pride and cohesion. By highlighting cultural heritage in city branding efforts, the group aims to position Bazar Abbas as a vibrant cultural destination that attracts tourists seeking authentic cultural experiences.

### Public Spaces & Environmental Sustainability

- This group will focus on analysing the relationship between public space (green and blue infrastructure), climate change and cultural tourism, while improving the overall liveability and quality of urban areas. Design proposals and step-by-step implementation strategies will be developed to enhance cultural tourism, resilience and the adaptability of urban environments. In addition, the group will explore how cultural tourism can be used to support the design strategies, ensuring that public spaces not only contribute to environmental sustainability, but also celebrate and promote the cultural heritage and unique experiences of the Port Said. By combining environmental resilience with cultural vibrancy, the aim is to create urban environments that are not only sustainable but also culturally enriching for both residents and visitors

### Cultural Tourism & Socio-economic Regeneration

- This group will identify key cultural assets and attractions in study area with tourism potential, focusing on strategies that highlight the area's unique heritage and cultural identity to promote cultural tourism. They will pay attention to the role of local stakeholders in developing marketing strategies and partnerships. Moreover, they will conduct socio-economic impact assessments to measure the benefits of cultural tourism on community well-being, ensuring that tourism development aligns with local traditions and benefits the local community.



## WORKSHOP STRUCTURE

The workshop consists of various elements including independent reading, expert inputs, excursions, discussions, and teamwork. Before the face-to-face workshop begins, there will be a preparation period that includes two short online sessions and independent reading assignment.

	20.06 Thursday	21.06 to 04.07 Two weeks	05.07 Friday
Focus of Day	Introduction	Independent Learning	Reflection
Kick-off 10:00 to 10:30	Getting to know each other	Independent Reading and presentation preparation	Presentation 5 to 10 mins by each group
Built-up 10:30 to 11:30	Introduction to workshop & assignment		
Wrap-up 11:30 to 12:00	Q & A		Final Discussion

Once the preparation period is complete, we will delve into practical work. The face-to-face workshop days are structured into four sections as follows:

- Kick-off** (one hour):  
getting to know each other  
getting to know the project and previous achievements  
occasionally having one input  
setting the objectives of the day and recap of previous day
- Built-up** (morning Session):  
Focus on building further on the topic of the day through lectures, discussion and groupwork
- Deep-dive** (afternoon Session)  
Getting to know the site and the neighbourhood  
Engaging in practical activities, collaborative workshop or case studies to apply the concepts learned through inputs
- Wrap-up** (one hour)  
Conclude the day with a discussion, reflection, exchange of ideas and summary of takeaways

	07.07 Sunday	08.07 Monday	09.07 Tuesday	10.07 Wednesday	11.07 Thursday	12.07 Friday	13.07 Saturday	14.07 Sunday	15.07 Monday
Focus of Day	Framework Context		Vision Objectives	Strategies Concept	Concept Guidelines	Guidelines Design	Tools Design	Detailed Design	Presentation
Kick-off 9 to 10	Project & Workshop	Rehabilitation internship	Inputs & Discussion	Inputs & Discussion	Submission of work	Team meeting	Team meeting	Team meeting	Submission of work
Built-up morning	Inputs & Discussion	Inputs & Discussions	Team discussion	Team discussion	Interim Colloquium	Team discussion	Team discussion Bazar Workshop with Stakeholders	Team discussion	Final Colloquium
Deep-dive afternoon	Site Visit European District	Site Visit Arab District	Teamwork	Teamwork	Site Visit Port Fouad	Teamwork	Teamwork	Teamwork	
Wrap-up evening	Site Visit Bazar Abbas	Exchange	Exchange	Exchange	Rest	Exchange	Exchange	Exchange	Rest
Extra	Joint Dinner					Semmesya in Fish Market			Semmesya Party



## WORKSHOP SCHEDULE

Day	Date	Time	Program
<b>Sa</b>	06.07	All day	Arrival and check-in
<b>Su</b>	07.07	08:45 to 09:00	Arrival at AAST Lecture Hall
		09:00 to 09:30	Welcome and Introduction Dr. Sepideh Zarrin Ghalam
		09:30 to 10:15	Input 1. Integrated Approach to Urban Rehabilitation Prof. Christoph Wessling
		10:15 to 11:00	Input 2. Sustainable Mobility: Connecting Urban Infrastructure with Cultural Tourism Prof. Maged Zagow
		11:00 to 11:15	Break
		11:15 to 12:00	Input 3. Public Space and Environmental Sustainability: Enhancing the Cultural Tourism Experience Mohamed Hamdy
		12:00 to 12:45	Input 4. Approaches for New Architecture in Historic Context Dr. Taymour Senbel
		13:00 to 14:00	Joint Lunch at AAST
		14:30	Bus pick-up in front of AAST
		15:00 to 17:00	Excursion with Port Said Ala Ademo (European District) (possibility of postponing to 5 to 7:30 pm due to the weather)
		17:00 to 18:00	Site Visit (Bazar Abbas) with Dr. Alaa and Samar
		19:30	Joint dinner at Alam el Bahar Restaurant (Bazar Abbas)
<b>Mo</b>	08.07	08:45 to 09:00	Arrival at AAST Lecture Hall
		09:00 to 09:45	Input 5. Heritage Interpretation for Cultural Tourism Prof. Alaa El Habashi
		09:45 to 10:30	Input 6. Adaptive Reuse, Principles and Case Studies Prof. Heba Abouelfadl
		10:30 to 11:15	Input 7. Cultural Tourism and UX Experience Approach Rasha Al Kadi
		11:15 to 11:30	Break
		11:30 to 12:15	Input 8. Safeguarding Intangible Heritage Rawda Abdelhady

## WORKSHOP SCHEDULE

		12:15 to 13:00	Input 9. Experiences from Bena Foundation Rasha Emad
		13:00 to 13:30	Input 10. Rehabilitation of Bazar Abbas (internship output) Samar Abdelaal
		13:30 to 14:30	Lunch Break
		15:00	Bus pick-up in front of AAST
		15:30 to 18:00	Excursion in Port Said with Port Said Ala Ademo (Al Arab District) (possibility of postponing to 5 to 7:30 pm due to the weather)
<b>Tu</b>	09.07	08:45 to 09:00	Arrival at Stabena
		09:00 to 09:30	Kick-off: team meeting (set-up the work plan)
		10:00 to 12:00	Built-up: teamwork (survey and data collection)
		12:00 to 13:00	Lunch Break
		13:00 to 14:00	Input 9. Experiences of Cultural Tourism in Egypt Dr. Soha Bahgat
		14:00 16:00	Deep-dive: teamwork (initial analysis)
		16:00 to 17:00	Wrap-up: group meeting, discussion about vision and objectives
<b>We</b>	10.07	08:45 to 09:00	Arrival at Stabena
		09:00 to 09:45	Input 10. Public Space and Climate Adaptation Prof. Simon Colwill
		10:00 to 12:00	Built-up: teamwork (strategies)
		12:00 to 13:00	Lunch Break
		13:00 to 16:00	Deep-dive: teamwork (concept and guidelines)
		16:00 to 17:00	Wrap-up: group meeting
<b>Th</b>	11.7	08:45 to 09:00	Arrival at AAST Lecture Hall – Interim Colloquium
		09:00 to 09:10	Submission of files with USB
		09:10 to 13:00	15 mins presentation by each group followed by 20 mins of discussion
		13:00 to 14:00	Joint Lunch at AAST
		14:30	Bus pick-up in front of AAST
		15:00 to 17:00	Site visit in Port Fouad with Port Said Ala Ademo (possibility of postponing to 5 to 7:30 pm due to the weather)

## WORKSHOP SCHEDULE

<b>Fr</b>	12.07	08:45 to 09:00	Arrival at Stabena
		09:00 to 09:30	Kick-off: team meeting (reflect on concept and guidelines)
		09:30 to 12:00	Built-up: teamwork (develop concept and guidelines)
		12:00 to 13:00	Lunch break
		13:00 to 16:00	Deep-dive: teamwork (design)
		16:00 to 17:00	Wrap up: group meeting
<b>Sa</b>	13.07	08:45 to 09:00	Arrival at Stabena
		09:00 to 12:00	Built-up: teamwork (design)
		11:00 to 13:00	Bazar Workshop with shopkeepers (parallel activity with interns)
		12:00 to 13:00	Lunch Break
		13:00 to 16:00	Deep-dive: teamwork (design)
		16:00 to 17:00	Wrap-up: group meeting
<b>Su</b>	14.07	08:45 to 09:00	Arrival at Stabena
		09:00 to 12:00	Built-up: teamwork (detailed design)
		12:00 to 13:00	Lunch Break
		13:00 to 17:00	Deep-dive: teamwork (detailed design)
		17:00 to 18:00	Wrap-up: group meeting per need
<b>Mo</b>	15.07	08:45 to 09:00	Arrival at AAST Lecture Hall – Interim Colloquium
		09:00 to 09:10	Submission of files with USB
		09:10 to 13:00	15 mins presentation by each group followed by 20 mins of discussion
		13:00 to 14:00	Joint Lunch at AAST restaurant
		14:30	Bus pick-up in front of AAST
		19:00	Semsemya Party at Abusaleh Beach
<b>Tu</b>	16.07		Check out and departure



## WORKSHOP PARTICIPANTS

Nr.	Name	Field of Study	University	Study Level
01	Reem Abdelaziz	Architecture	Alexandria University	Bachelor's Student
02	Mariam Assem	Architecture	Alexandria University	Bachelor's Student
03	Basma El-Asser	Architecture	Alexandria University	Bachelor's Student
04	Riham Bahram	Architecture & Environmental Design	AAST	Bachelor's Student
05	Yasmin Hatem	Architecture	Port Said University	Bachelor's Graduate
06	Mohamed Rekka	Architecture & Urban Planning	Port Said University	Bachelor's Graduate
07	Habiba Rashed	Architecture	Alexandria University	Bachelor's Graduate
08	Sarah El-Sadek	Architecture	Alexandria University	Bachelor's Graduate
09	Wessam Tolba	Architecture	Alexandria University	Bachelor's Graduate
10	Farida Hossam	Architecture	Cairo University	Bachelor's Graduate
11	Mariam Mohamed	Architecture	Cairo University	Bachelor's Graduate
12	Nour Sherif	Architecture	Cairo Higher Institute for Engineering & Computer Science (Chi)	Bachelor's Graduate
13	Sally Tawfik	Architecture	Assiut University	Bachelor's Graduate
14	Nada Abdo	Architecture & Environmental Design	AAST	Master's Student
15	Ahmed Fouad	Architecture	Alexandria University	Master's Student
16	Nada Sakr	urban design & Community Development	Cairo University	Master's Student
17	Fayrouz Rehan	Restoration & Conservation	Cairo University	Master's Student
18	Fatma Hassan	Architecture	Cairo University	Master's Student
19	Mostafa Hussam Eldin	Architecture	Cairo University	Master's Student
20	Süreyya Akin	Urban Design	BTU / Alexandria / Cairo	Master's Student
21	Prajna Kumaraswamy	Urban Design	BTU / Alexandria / Cairo	Master's Student
22	Nourhan Diab	Architecture	Modern Sciences & Arts University	Master's Student
23	Mennatallah Salama	Digital Cultures	University College Cork	Master's Graduate
24	Yasmine Gramoun	Interior Architecture & Design	Birmingham City University	Master's Graduate
25	Fayrouz Ashraf	Architecture & Environmental Design	Suez Canal University	Master's Graduate

### Group 1

Basma El-Asser  
Ahmed Fouad  
Fatma Hassan  
Mohamed Rekka  
Sally Tawfik

### Group 2

Süreyya Akin  
Nourhan Diab  
Sarah El-Sadek  
Fayrouz Rehan  
Wessam Tolba

### Group 3

Nada Abdo  
Fayrouz Ashraf  
Mariam Assem  
Yasmin Hatem  
Habiba Rashed

### Group 4

Riham Bahram  
Yasmine Gramoun  
Farida Hossam  
Prajna Kumaraswamy  
Mariam Mohamed

### Group 5

Reem Abdelaziz  
Mostafa Hussam Eldin  
Nada Sakr  
Mennatallah Salama  
Nour Sherif

## WORKSHOP TEAM

---

### Team

Prof. Christoph Wessling	Brandenburg University of Technology
Prof. Simon Colwill	Brandenburg University of Technology / IU International University of Applied Sciences
Dr. Sepideh Zarrin Ghalam	Brandenburg University of Technology
Samar Abdelaal	Brandenburg University of Technology
Prof. Dr. Alaa ElHabashi	Al-Yakaniya for Heritage and Arts
Prof. Dr. Maged Zagow	Galala University
Mohamed Hamdy	Galala University
Zainab Tahoon	Galala University
Miran Shouman	Port Said Ala Ademo
Mohamed Hassan	Port Said Ala Ademo
Dr. Taymour Senbel	Alexandria University
Rasha Al Kadi	Egyptian Junior Business Association
Rawda Abdelhady	Raquda Foundation
Rasha Emad	Benaa Foundation

### Guests

Prof. Heba Abouelfadl	Alexandria University
Prof. Soha Bahgat	Ministry of Tourism
Prof. Aliaa ElSadaty	Cairo University
Omar Nagati	Cluster Cairo

### Support Team

Muhammad Mosaad	Stabena
Paula Nagy & Ahmed Emad	Videography & Photography

### Host

Stabena	Team of Stabena and Port Said Ala Ademo
Arab Academy for Science, Technology & Maritime Transport, Port Said branch	Prof. Dr. Mohamed Fahmy and Dr. Amr Baioumy

## WORKSHOP ADDRESSES

### Workshop Venues

09.07 to 10.07 and 12.07 to 14.07	07.07, 08.07, 11.07, 15.09 (Inputs and Colloquia)
<b>StaBena Cultural Hub</b>  26 Abdel Salam Aref and Salah El Deen St. Port Said, Egypt, 42511  T +20 1503011710 E <a href="mailto:stabeneporssaid@gmail.com">stabeneporssaid@gmail.com</a>  Contact Person Mohamed Hassan CEO E <a href="mailto:mishohassan2014@gmail.com">mishohassan2014@gmail.com</a>	<b>Arab Academy for Science and Technology and Maritime Transport, Port Said Campus</b>  College of Engineering and Technology Architectural and Environmental Design Department  23 July street, Port Fouad Port Said, Egypt, 8587101  W <a href="http://www.aast.edu/en/">www.aast.edu/en/</a> T +2 0663422302  Contact Person Dr. Amr Baioumy <a href="mailto:amrbayoumi.arch@aast.edu">amrbayoumi.arch@aast.edu</a>

### Accommodation

06.07 to 16.07
<b>Aracan Hotel</b>  El-Shaheed Atef El-Sadat Atef elsadat ST, 11234 Port Said, Egypt



## CONTACT

---

For questions and inquiries:

### **Brandenburg University of Technology, Cottbus – Senftenberg.**

Faculty of Architecture, Civil Engineering and Urban Planning  
Institute of Urban Planning  
Department of Landscape Architecture  
Samar Abdelaal  
E [samar.abdelaal@b-tu.de](mailto:samar.abdelaal@b-tu.de)  
+20 122 6302054

### **Port Said Ala Ademo**

Miran Shouman  
E [miraanshoman@gmail.com](mailto:miraanshoman@gmail.com)  
+20 111 6750300

---

#### **Project**

Bazar Abbas: Recovery Lab of Port Said



#### **Lead Organisation**

Brandenburg University of Technology, Cottbus – Senftenberg



#### **Project Partners**

Galala University  
Al-Yakaniya for Heritage and Arts  
Port Said Ala Ademo  
Alliance Française de Port-Saïd



#### **With Support of**

Arab Academy for Science, Technology & Maritime Transport



#### **Funded by**

British Council's Cultural Protection Fund in partnership with the Department for Digital, Culture, Media & Sport



In partnership with

