

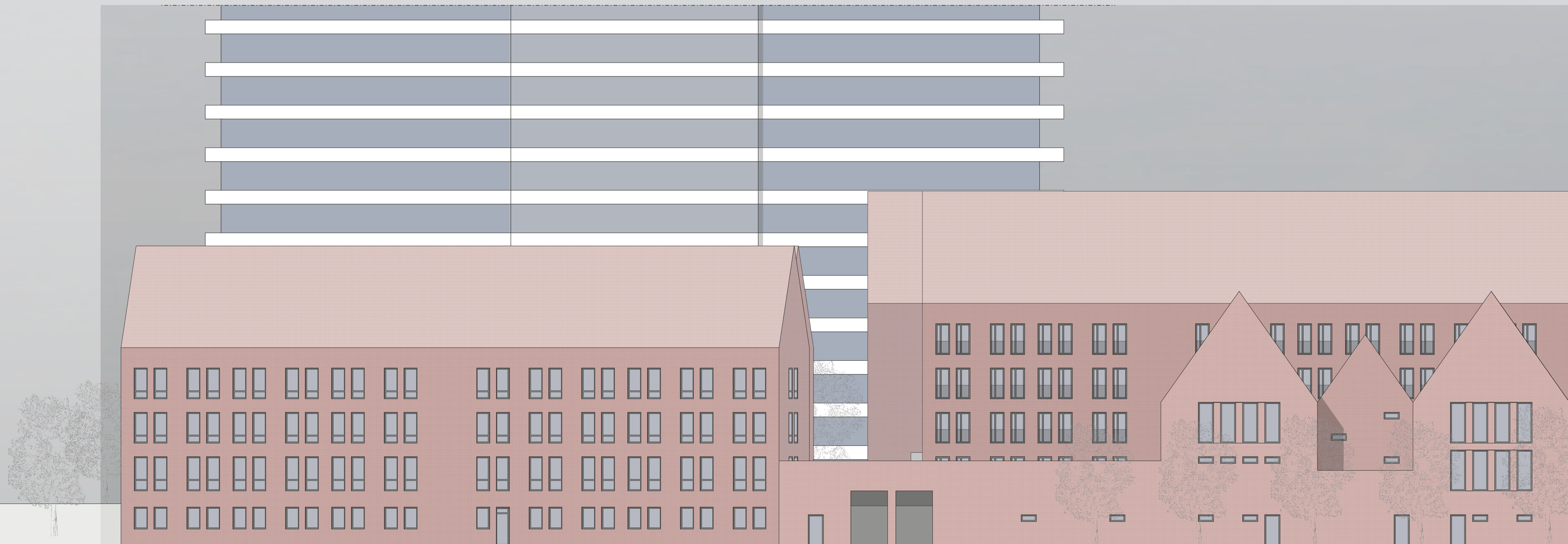
MeEr sieht TeRrassEn



Schwarzen M1:10000



Lageplan M1:1000



Ansicht Süd M1:200



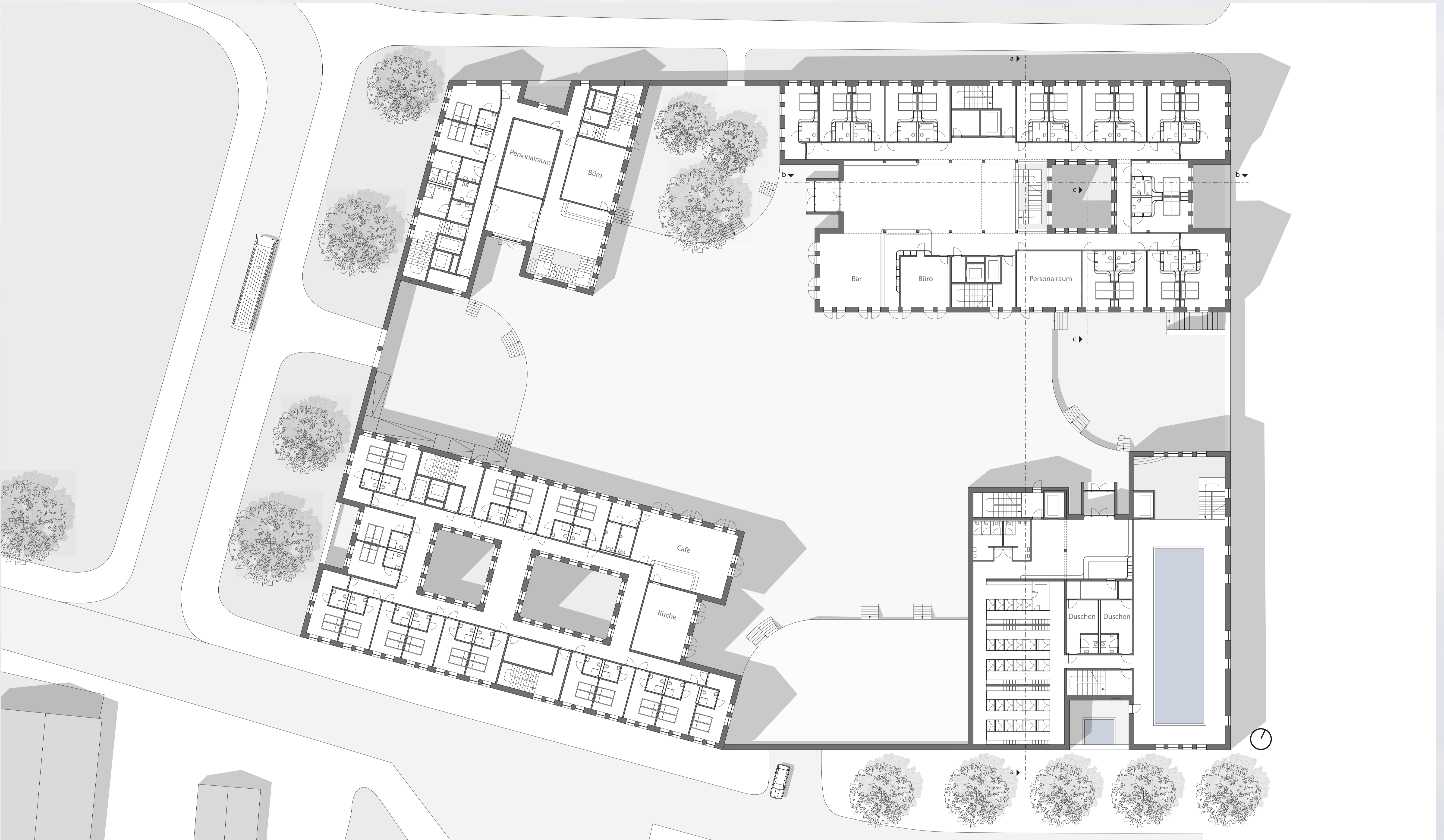
Umnutzung von Parkplätzen/Erreichung



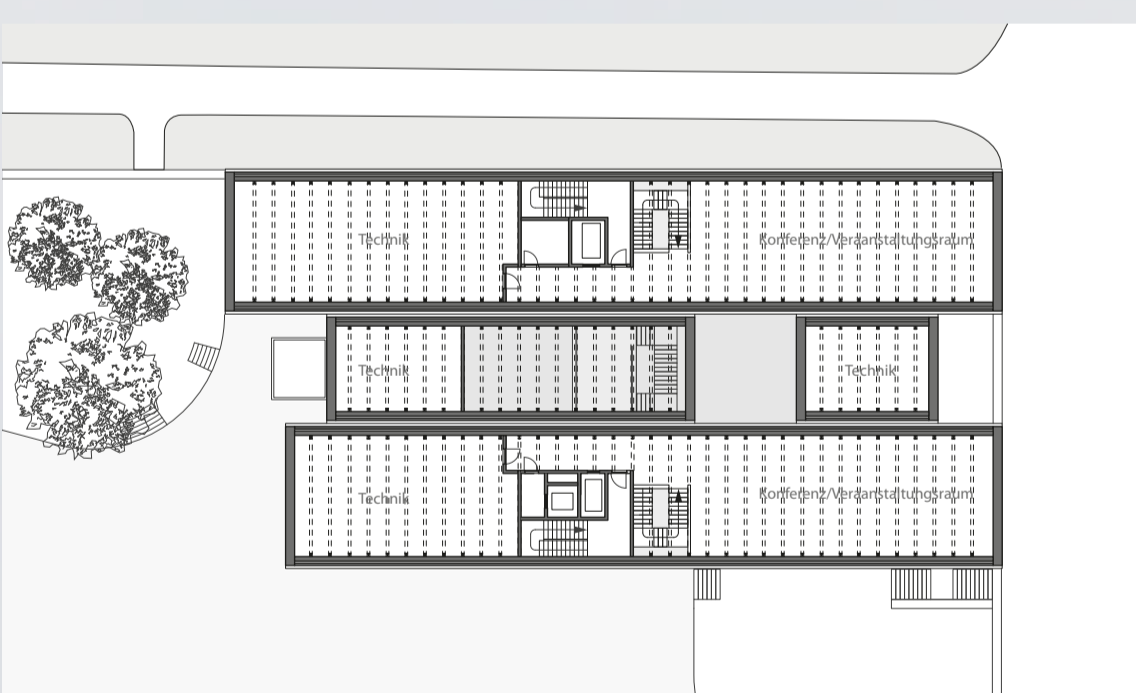
Schnitt a-a M1:200



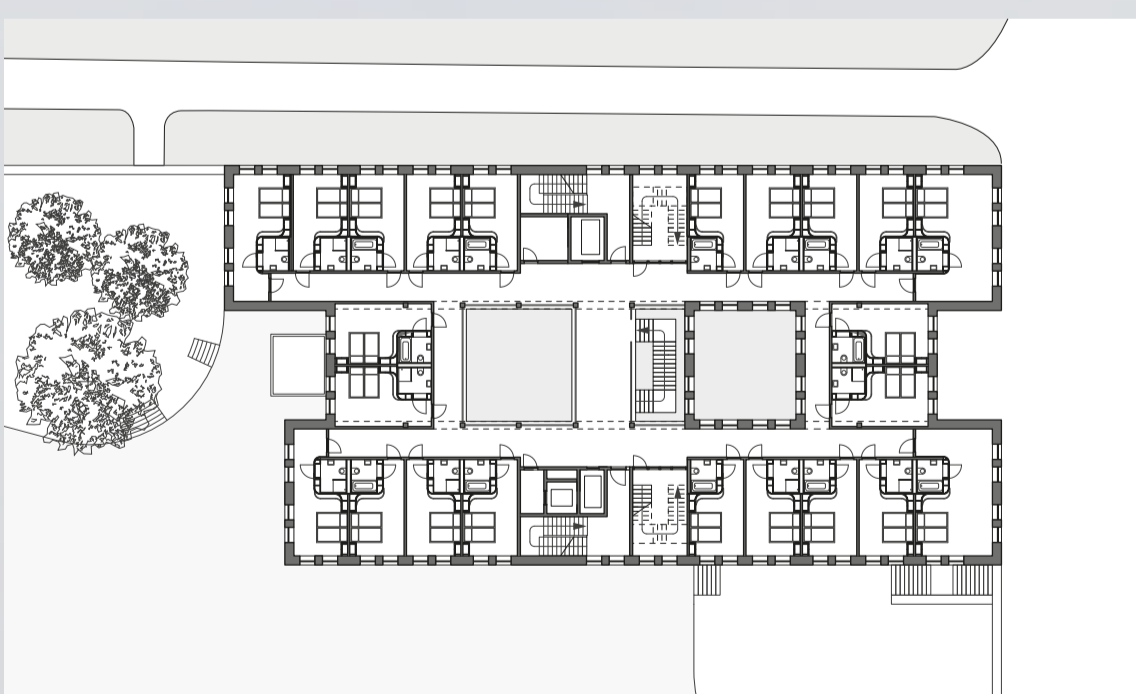
Schnitt b-b M1:200



Grundriss OG1 M1:200



Grundriss DG M1:500



Grundriss OG4 M1:500



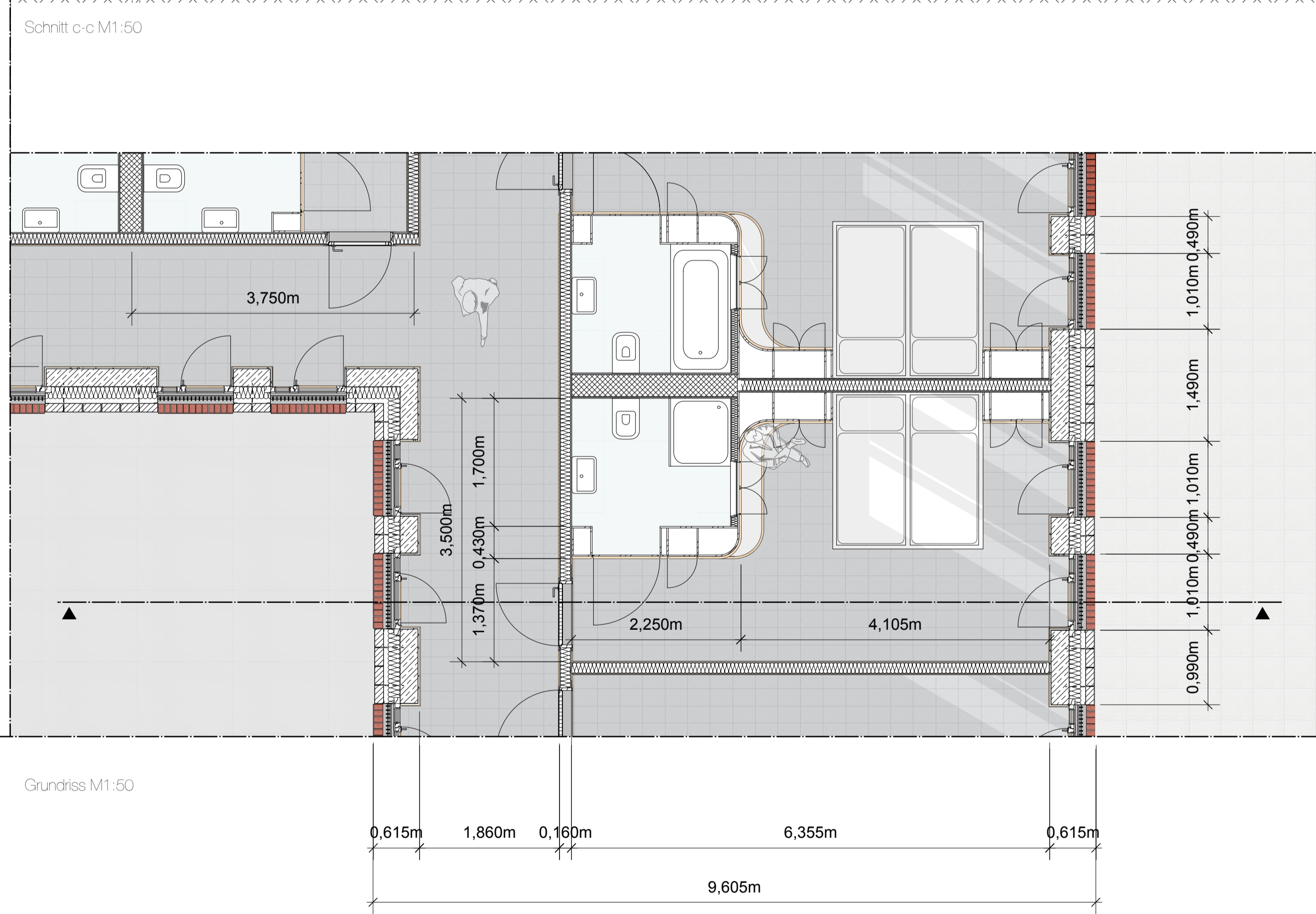
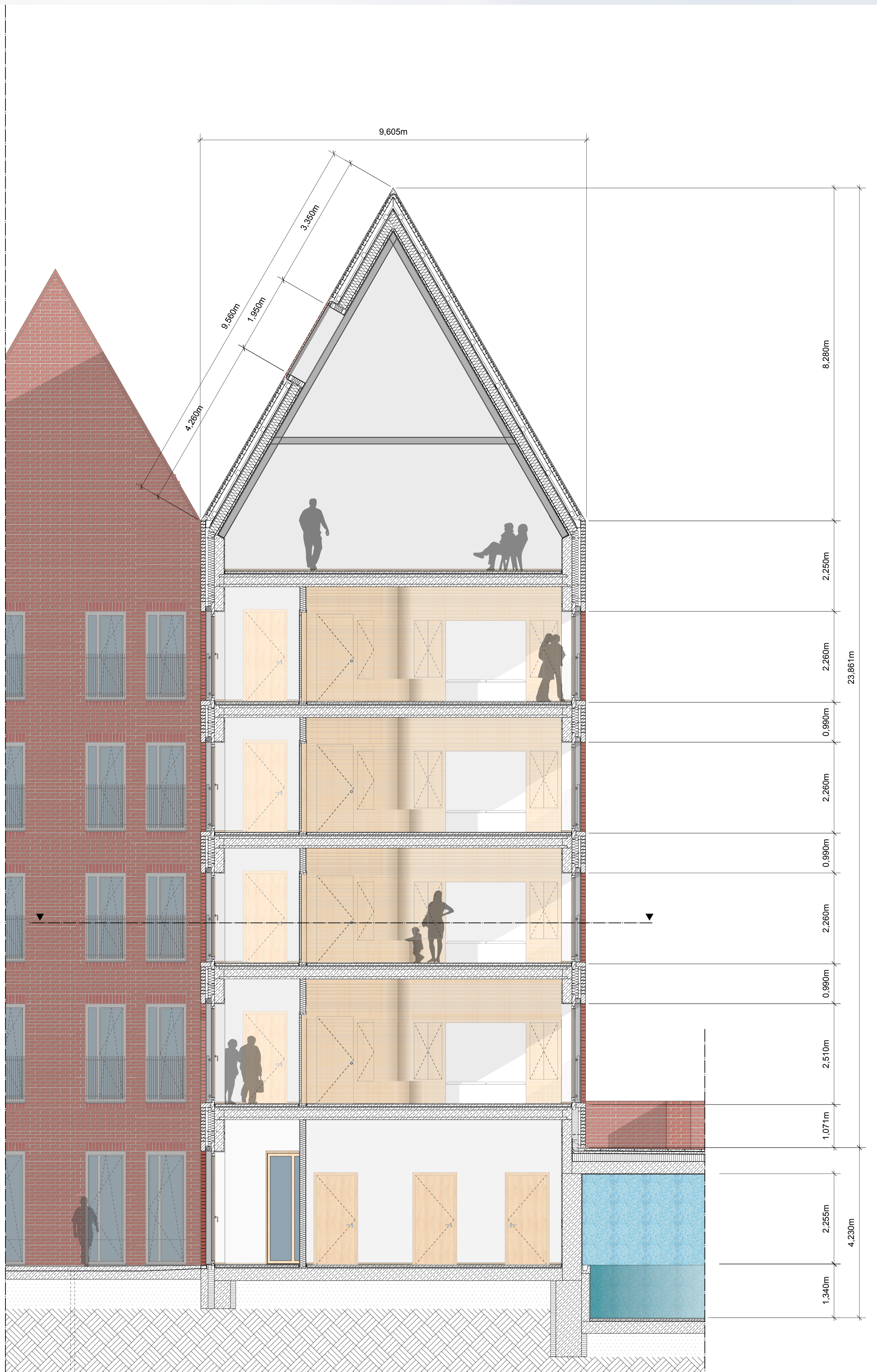
Grundriss OG2 M1:500



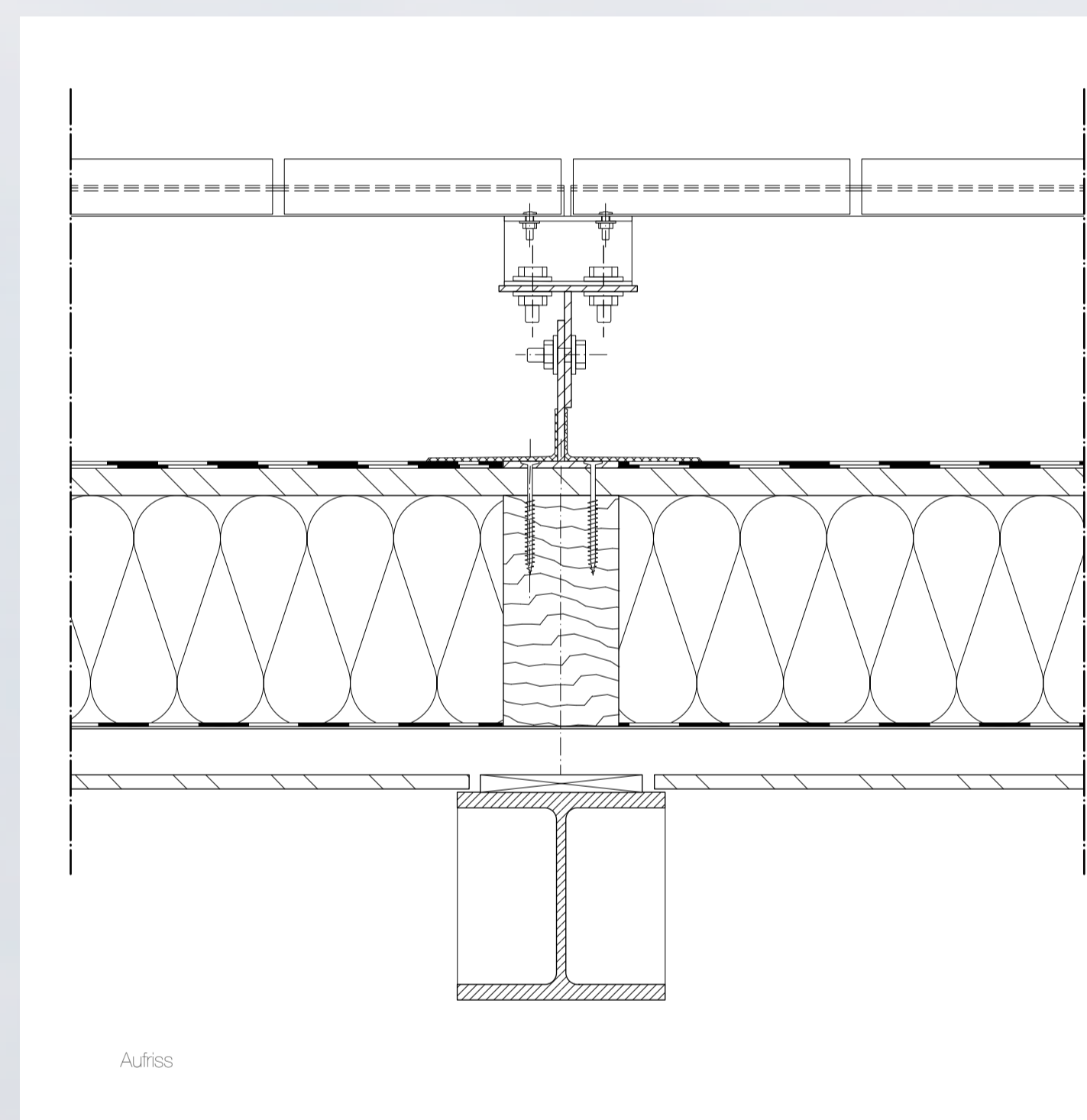
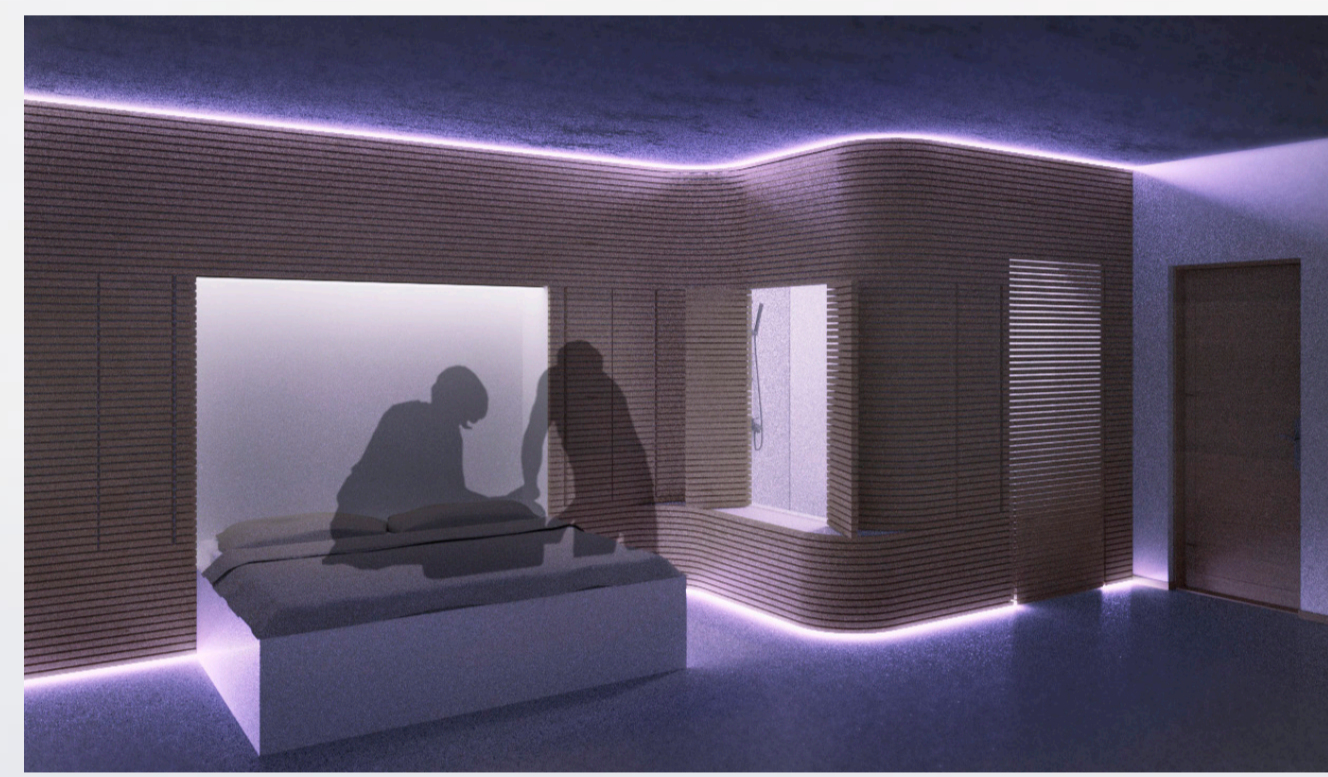
Grundriss EG M1:500



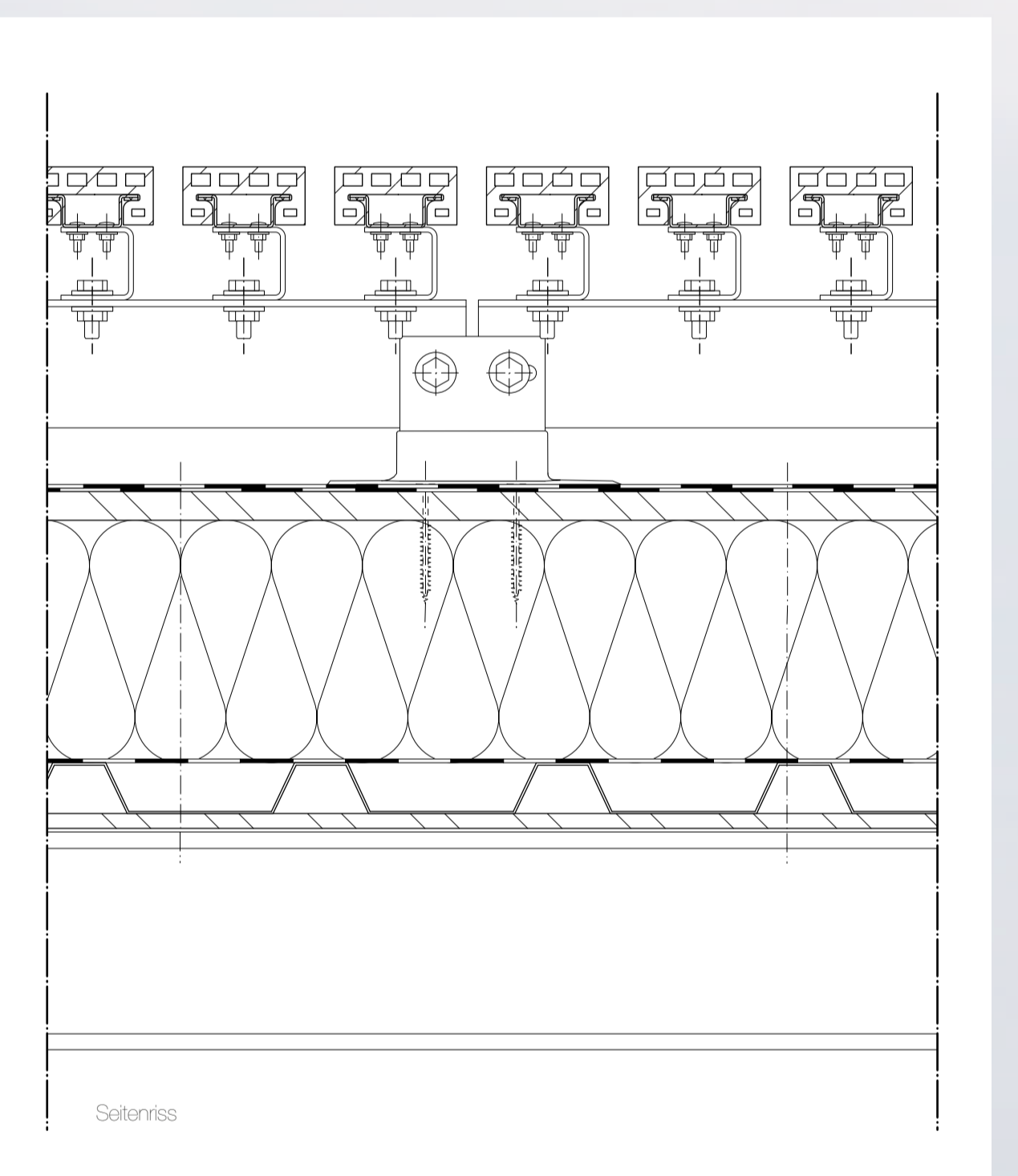
Ansicht Nord (Thema) M1:200



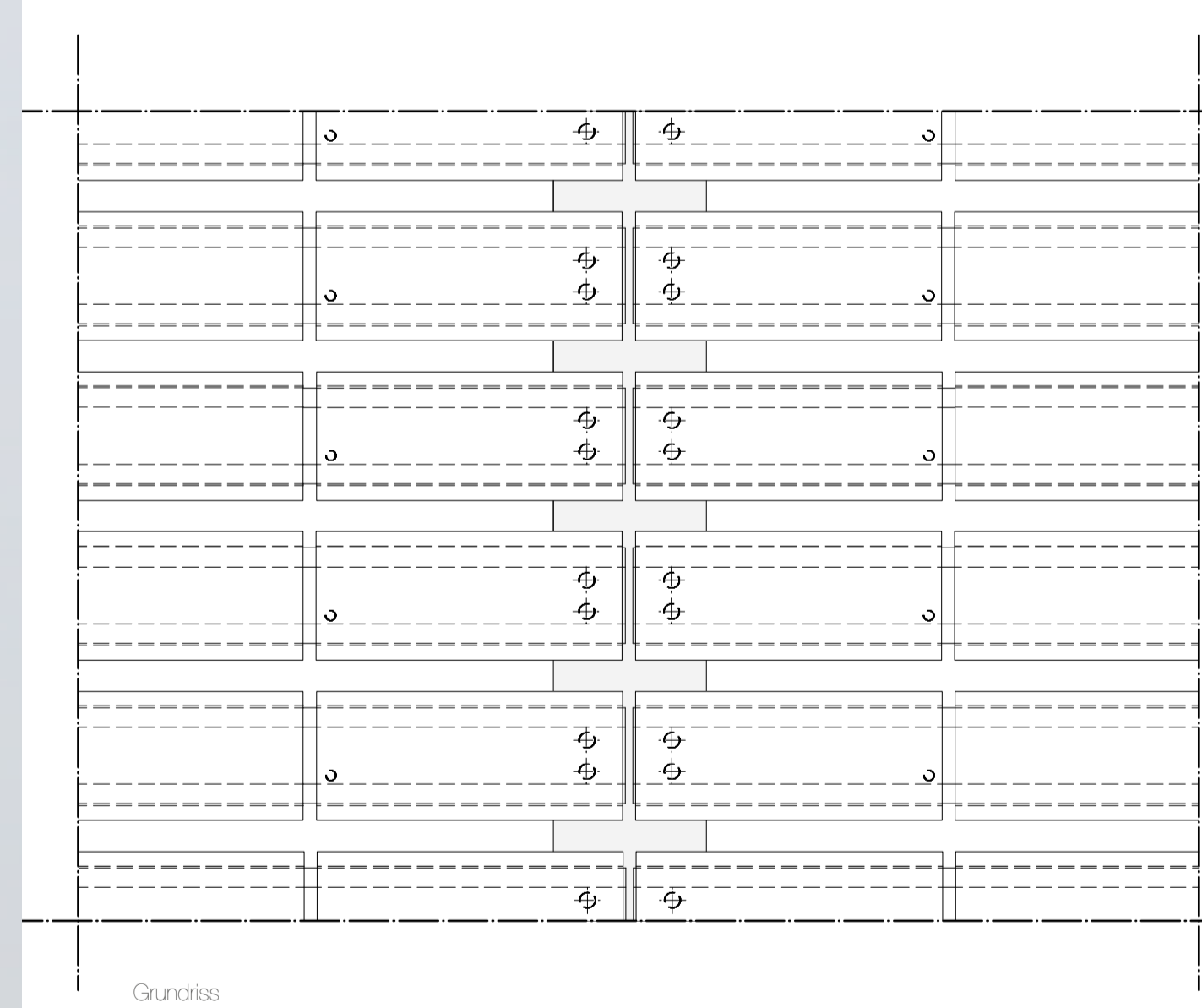
Hotelzimmer/Atmosphäre



Aufsicht



Seitenansicht



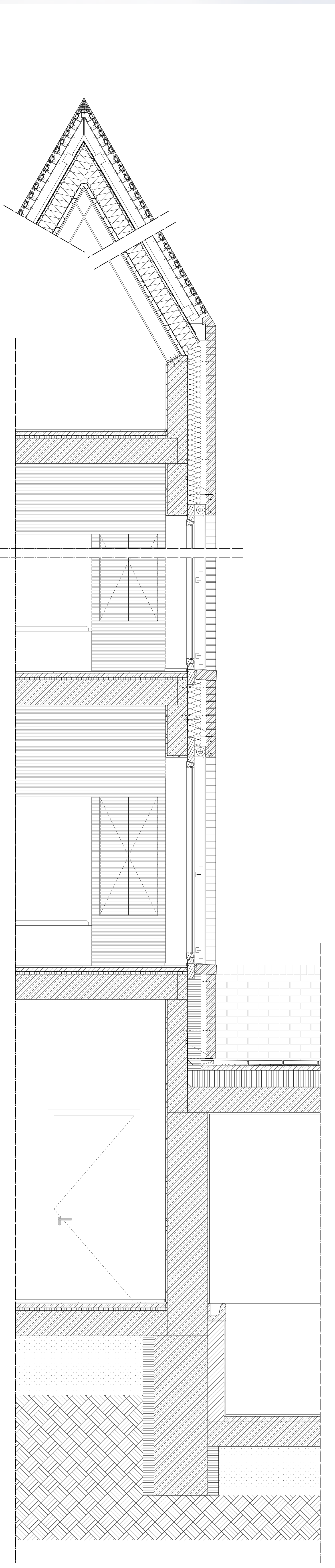
Grundriss

- Foamliner auf Schiene aufgeschoben (offene Fugen)
- Montagschiene U-Profil
- Montagschiene T-Profil
- Halbwinkel (abgedichtet)
- Abdichtung 2-lagig
- Zementgebundene Platte 24mm
- Dämmung 20cm (mineralisch)
- Lageholz 20/10cm
- Trapsblech
- Gipskartonverkleidung 12mm und Lageholz 15mm
- HEB180

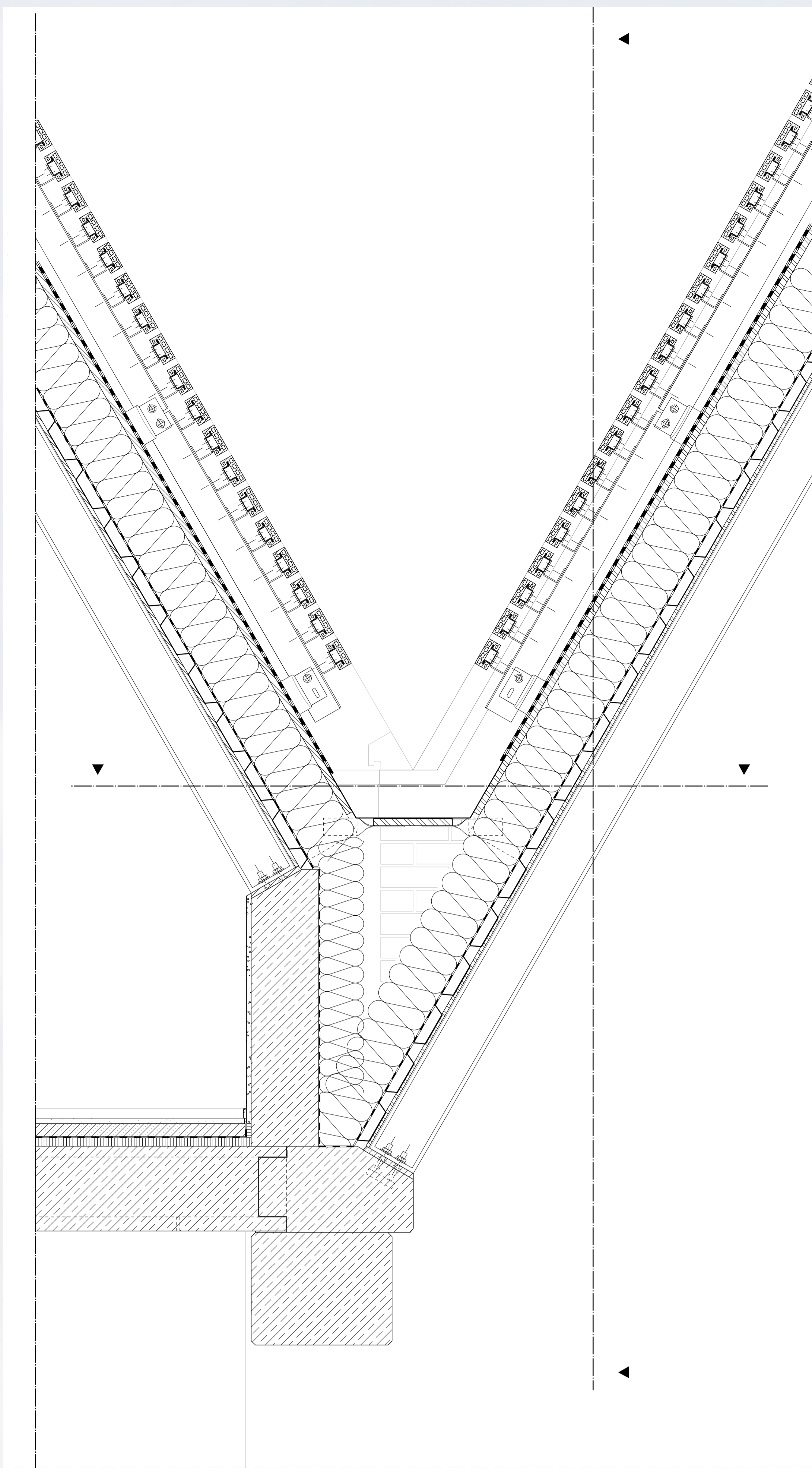
Drei-Tafel-Projektion Dachaufbau M1:5



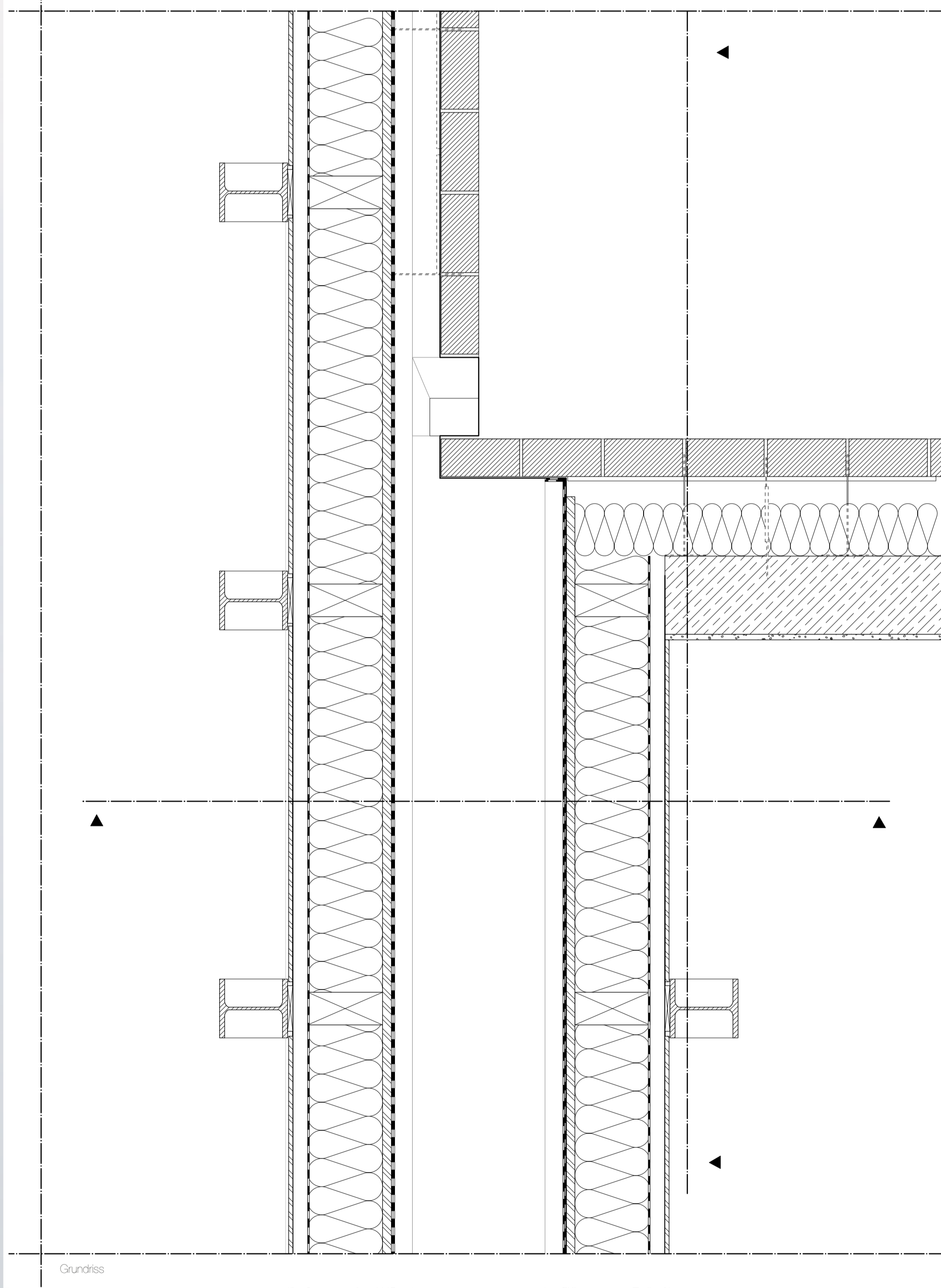
Ansicht Nord (4-Sterne Hotel) M1:200



Fassadenschnitt M1:20

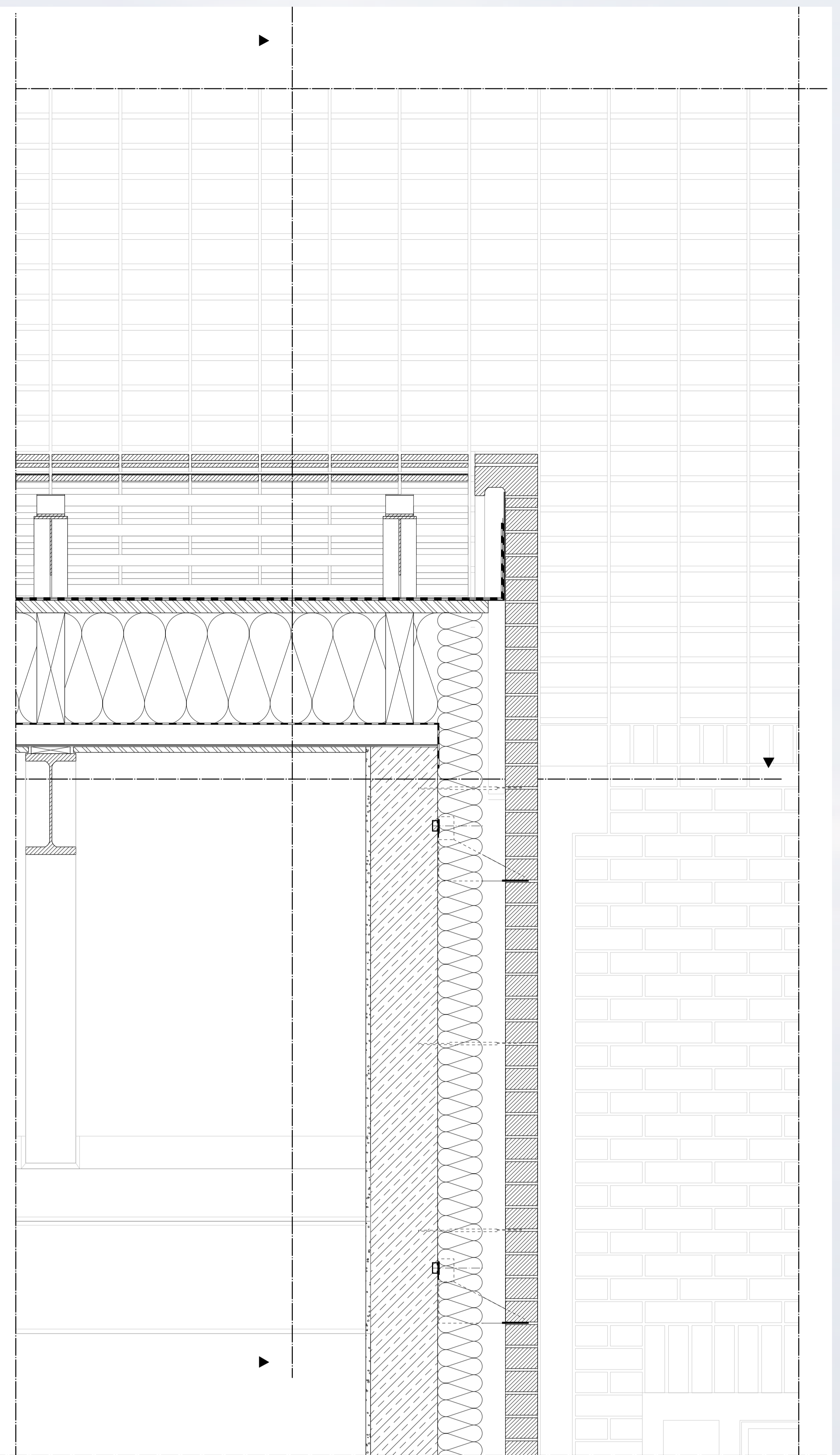


Aufbis



Gurdriss

Drei-Tafel-Projektion Dachkellerbau M1:10



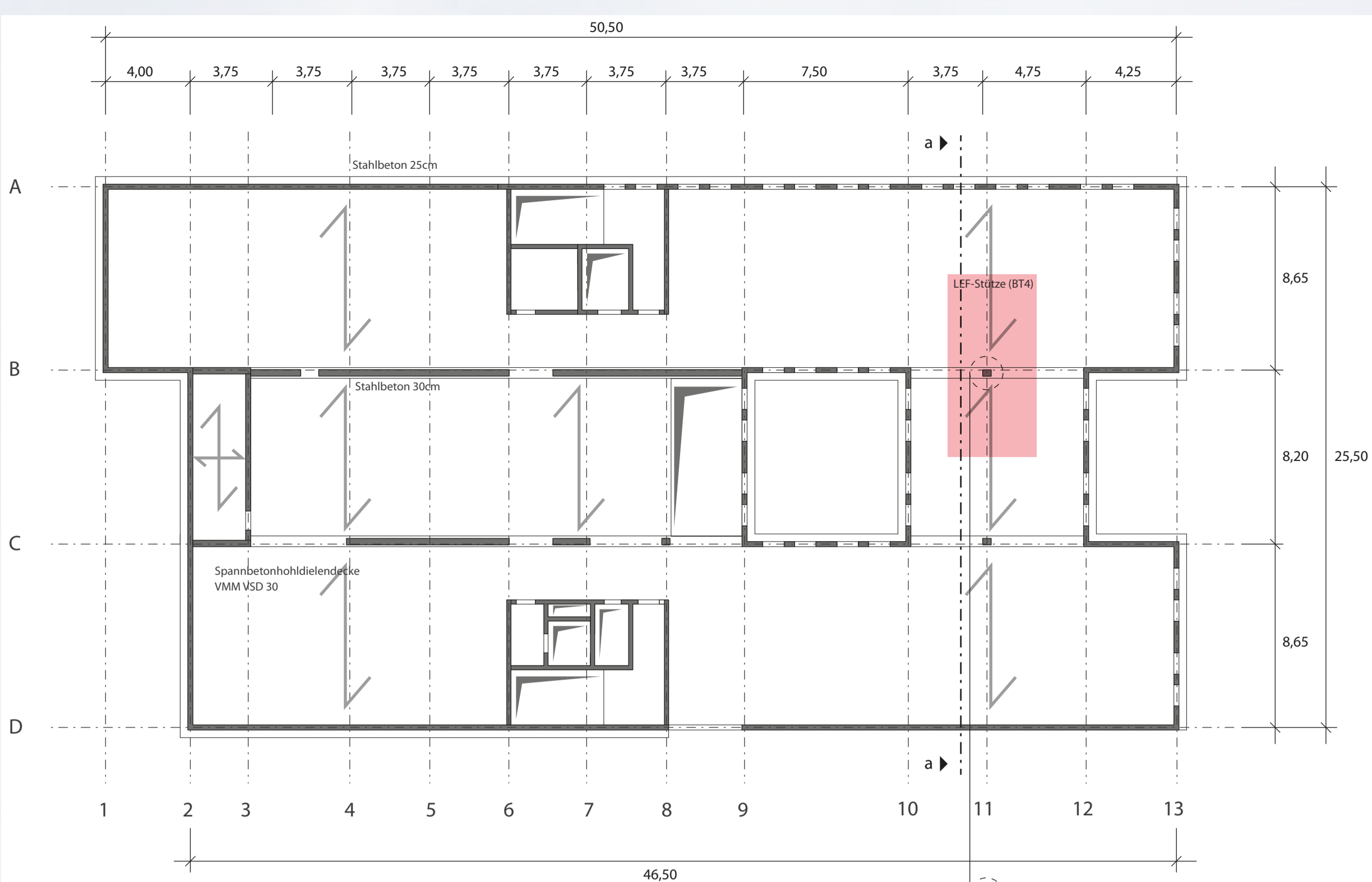
Sollerriss



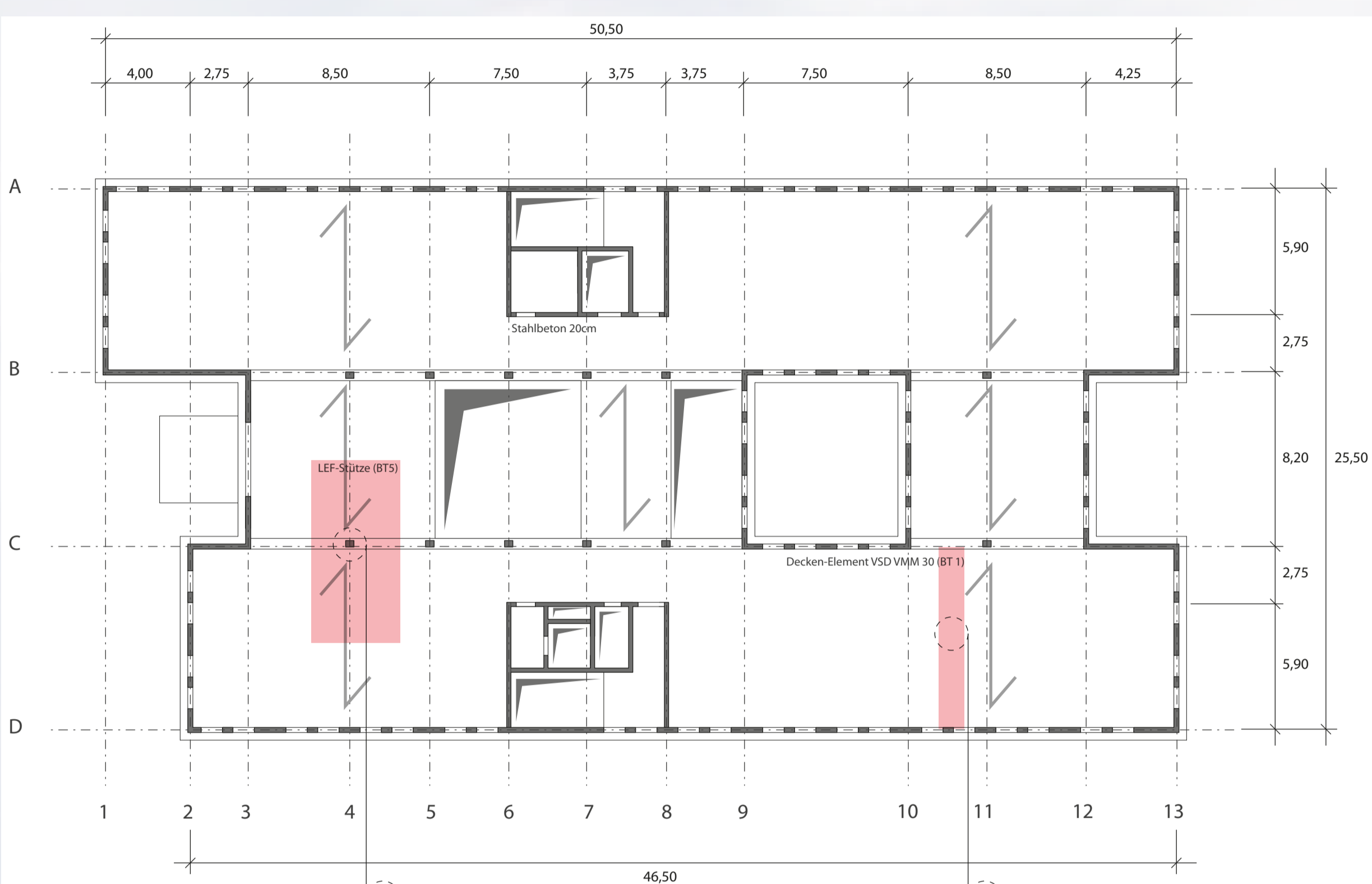
Dachbau M1:2



Ansicht West (Hole) M1:200



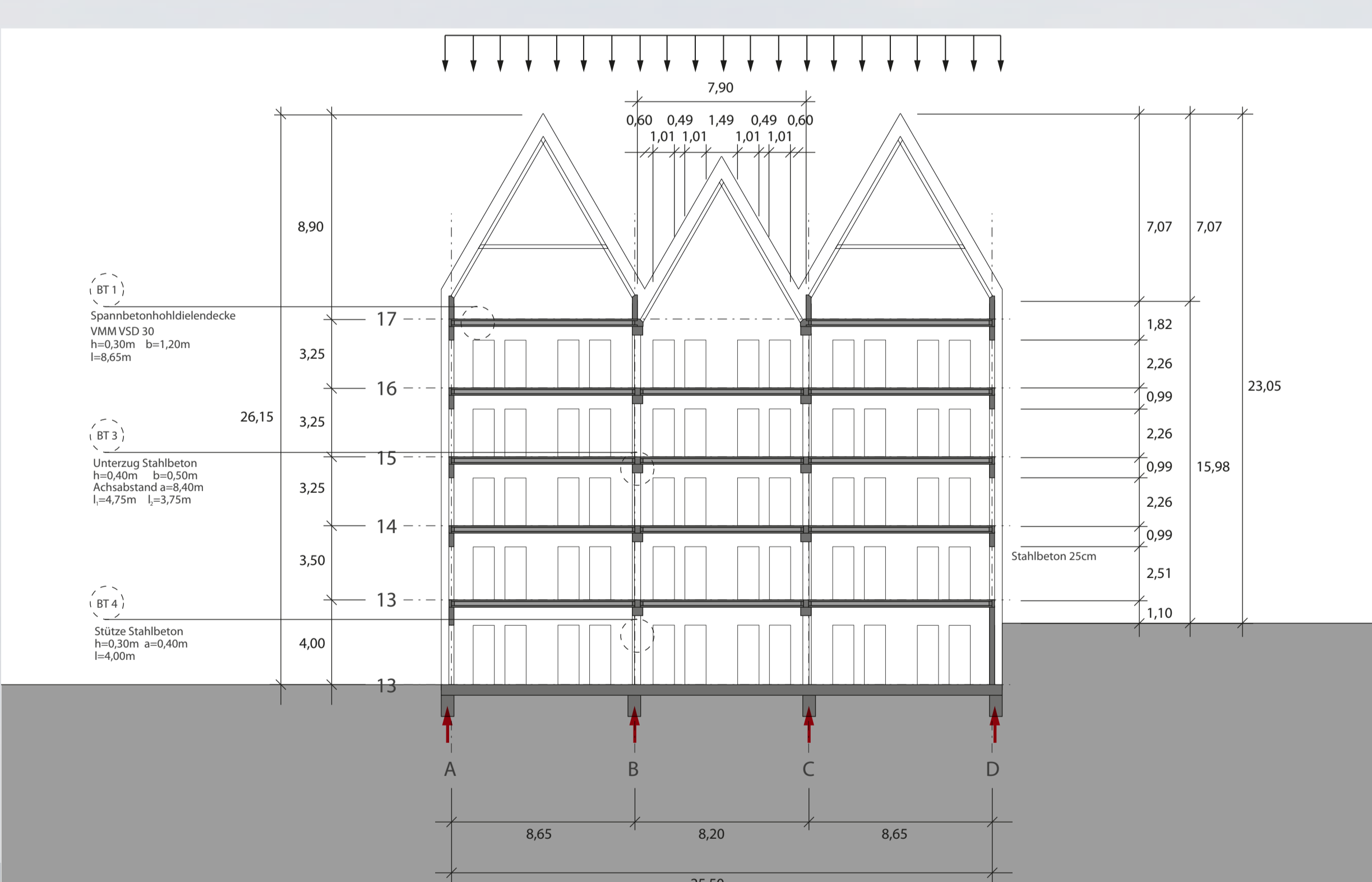
Grundriss OG2 M1:200



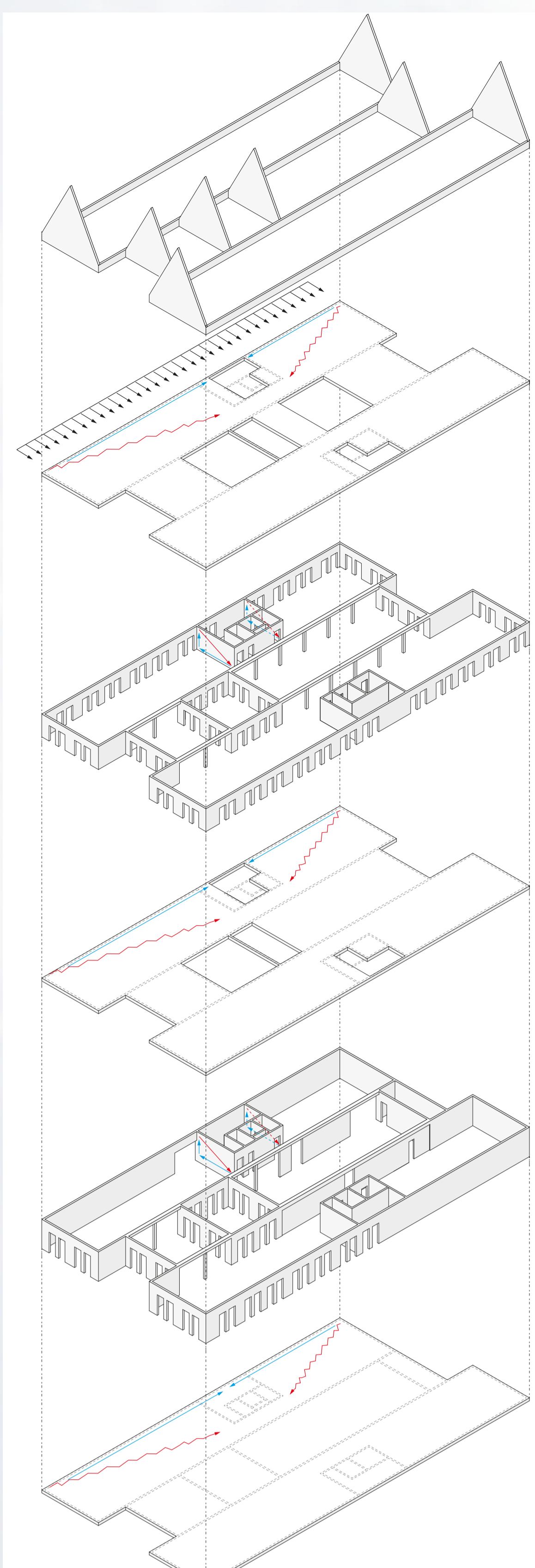
Grundriss OG1 M1:200



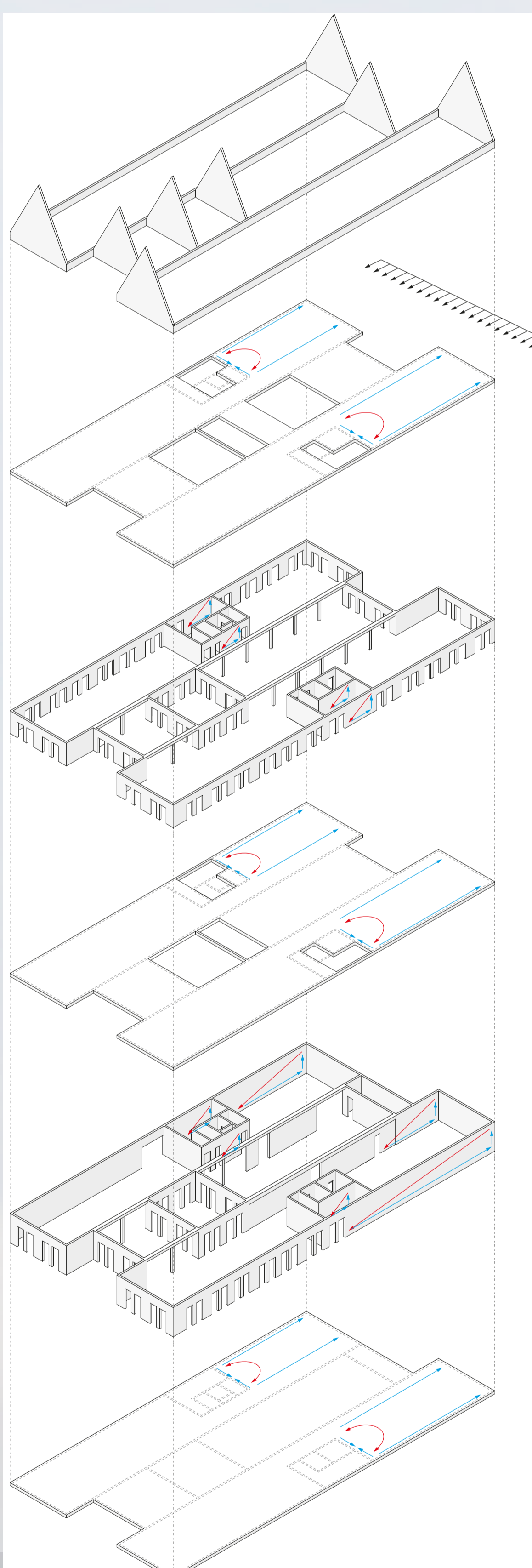
Grundriss EG M1:200



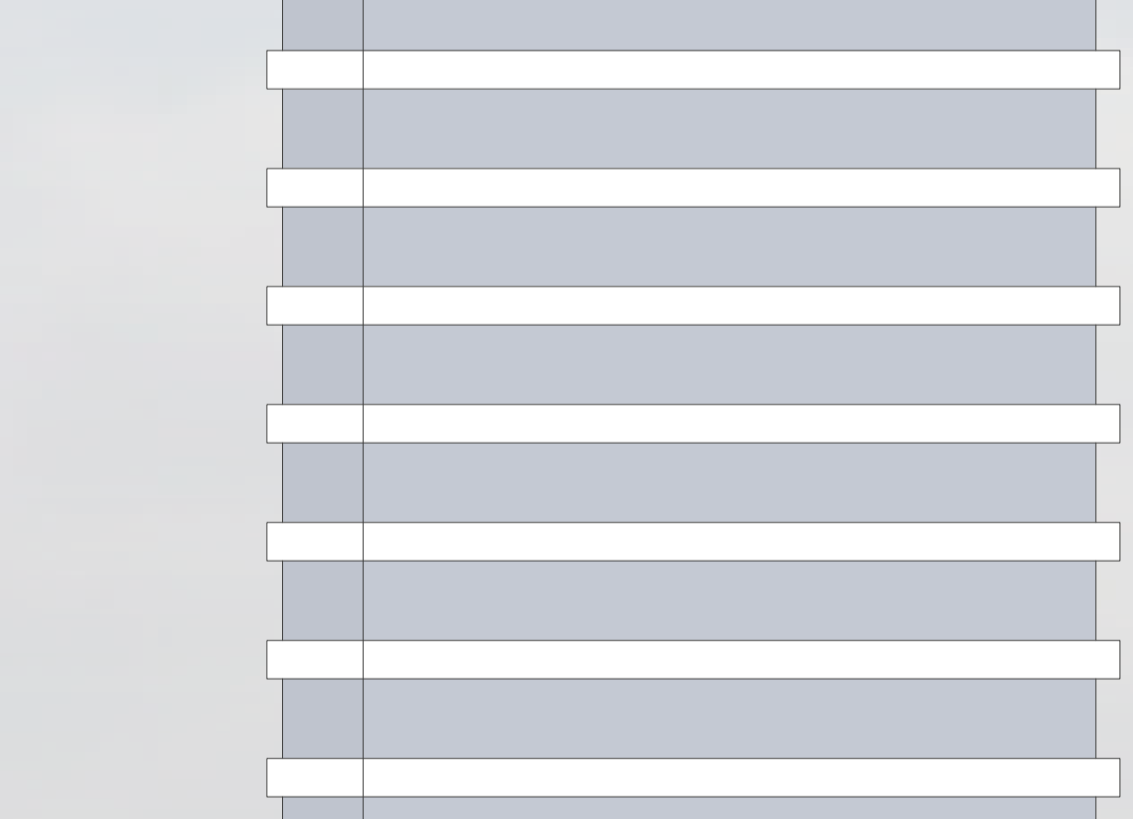
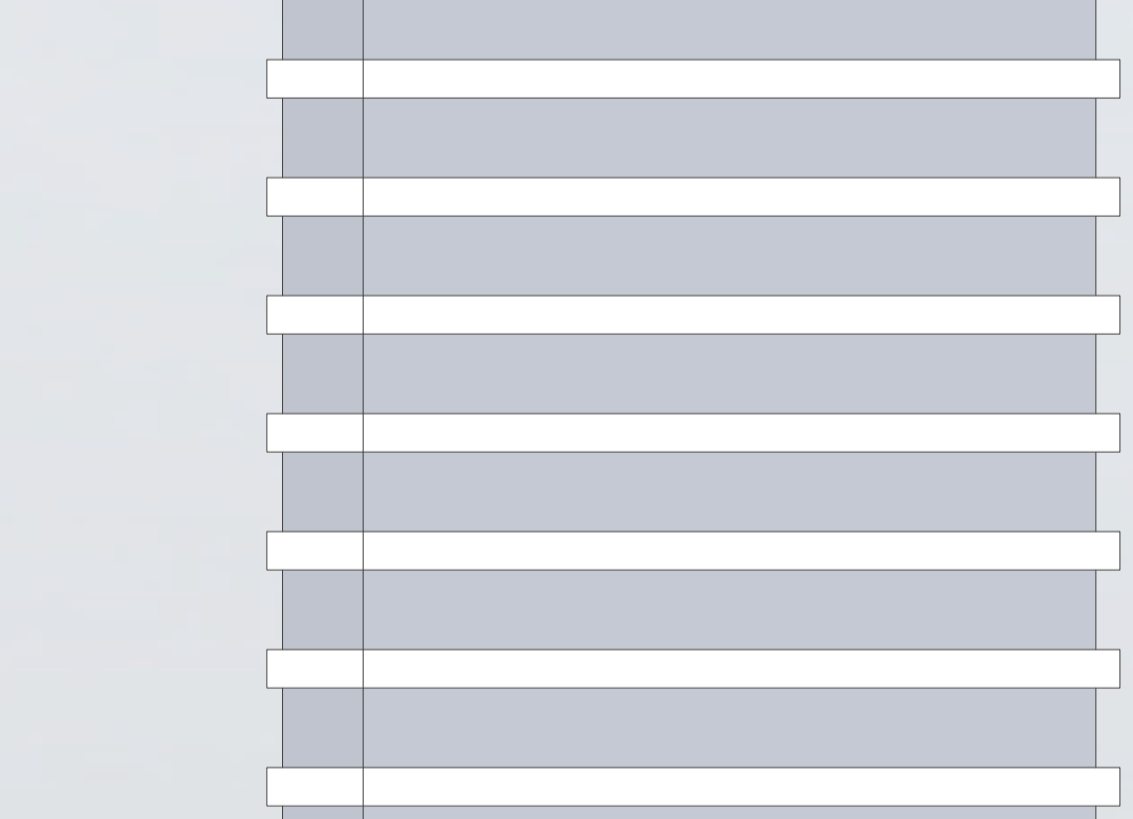
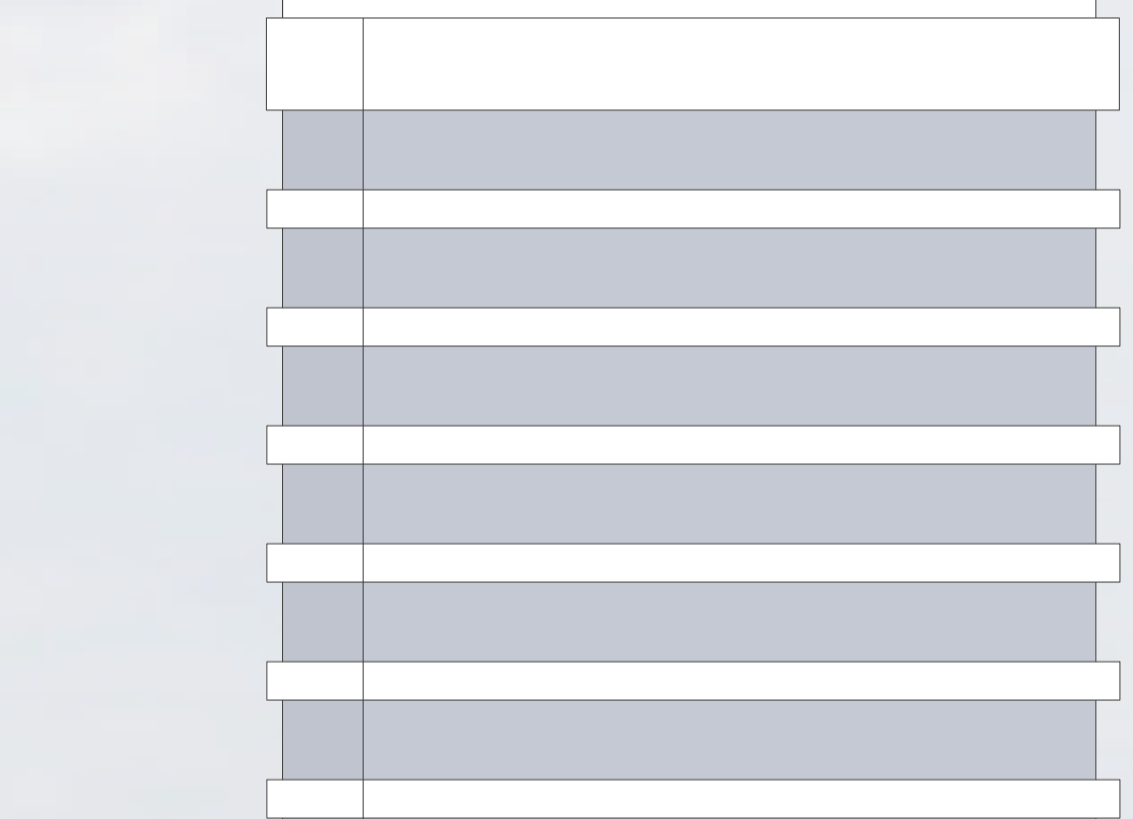
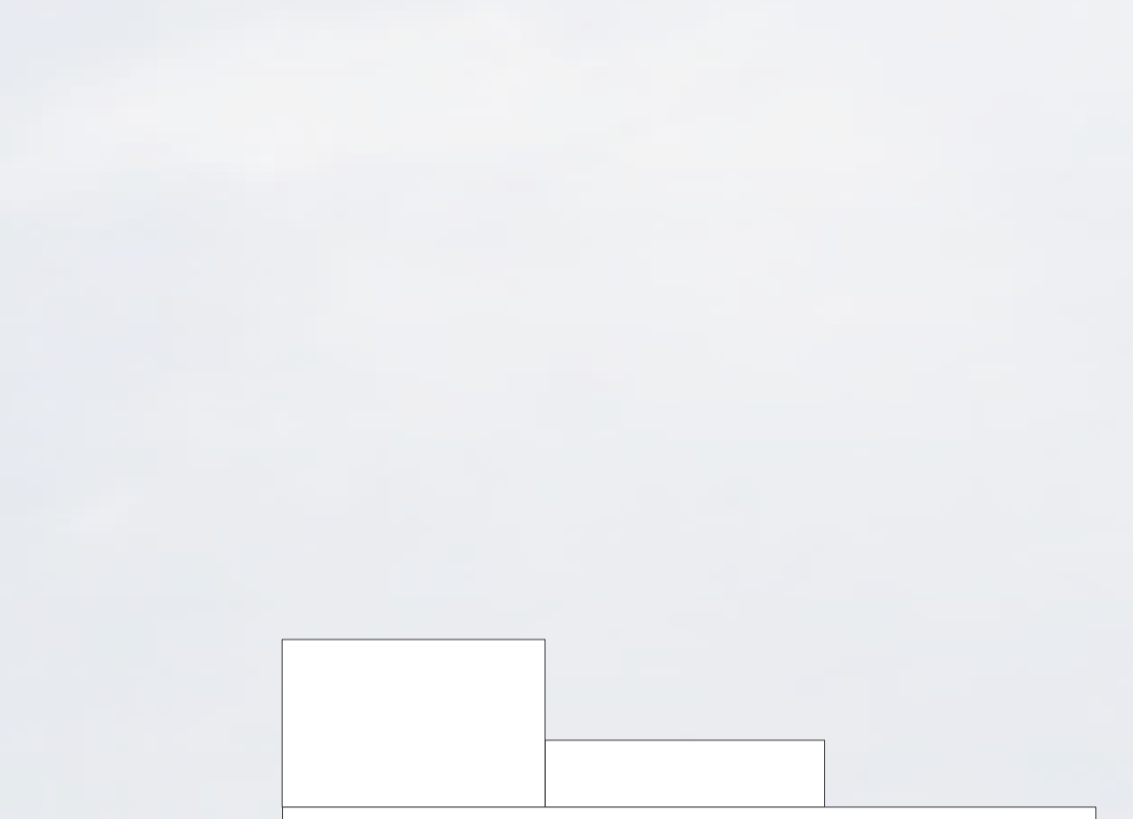
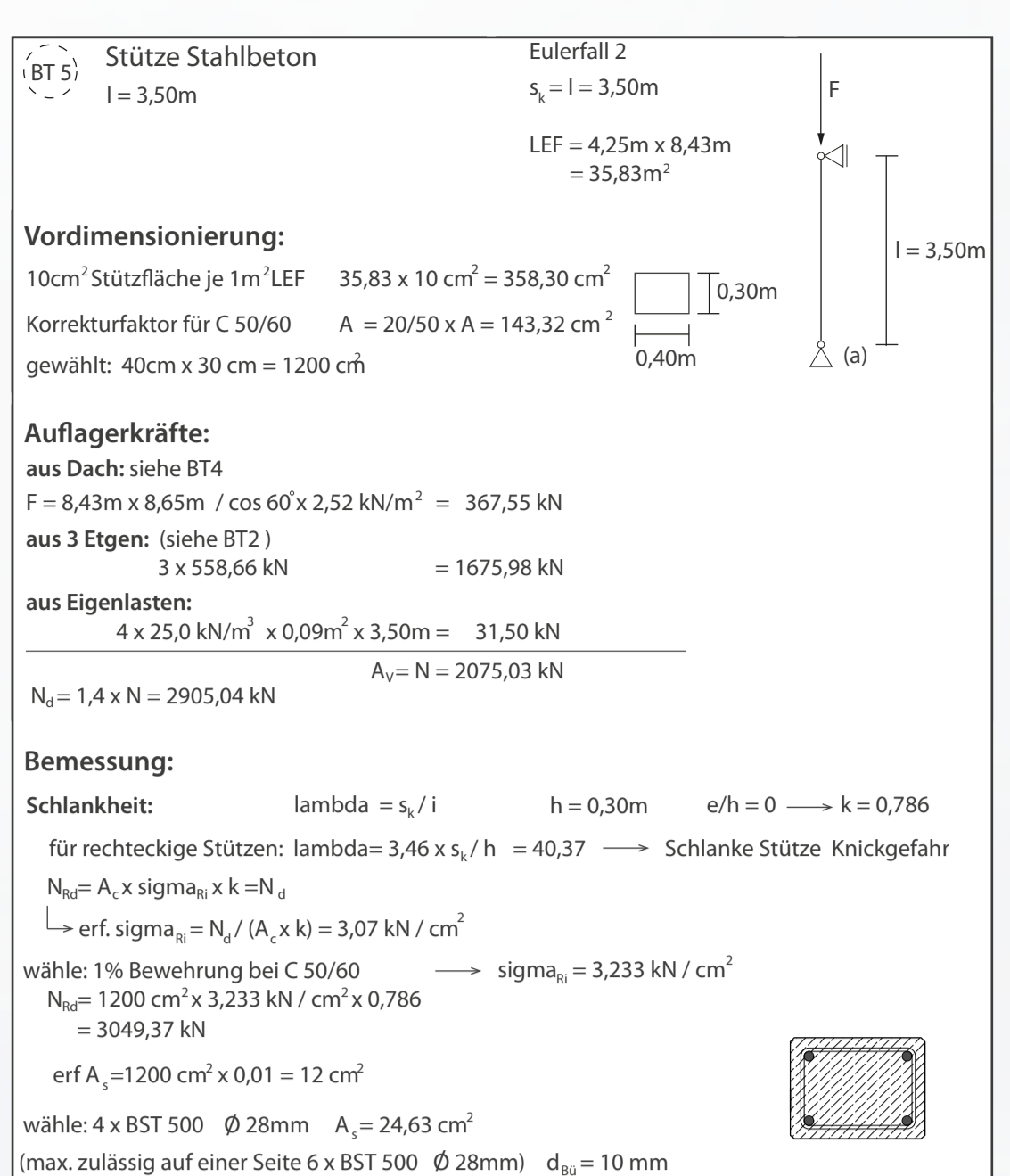
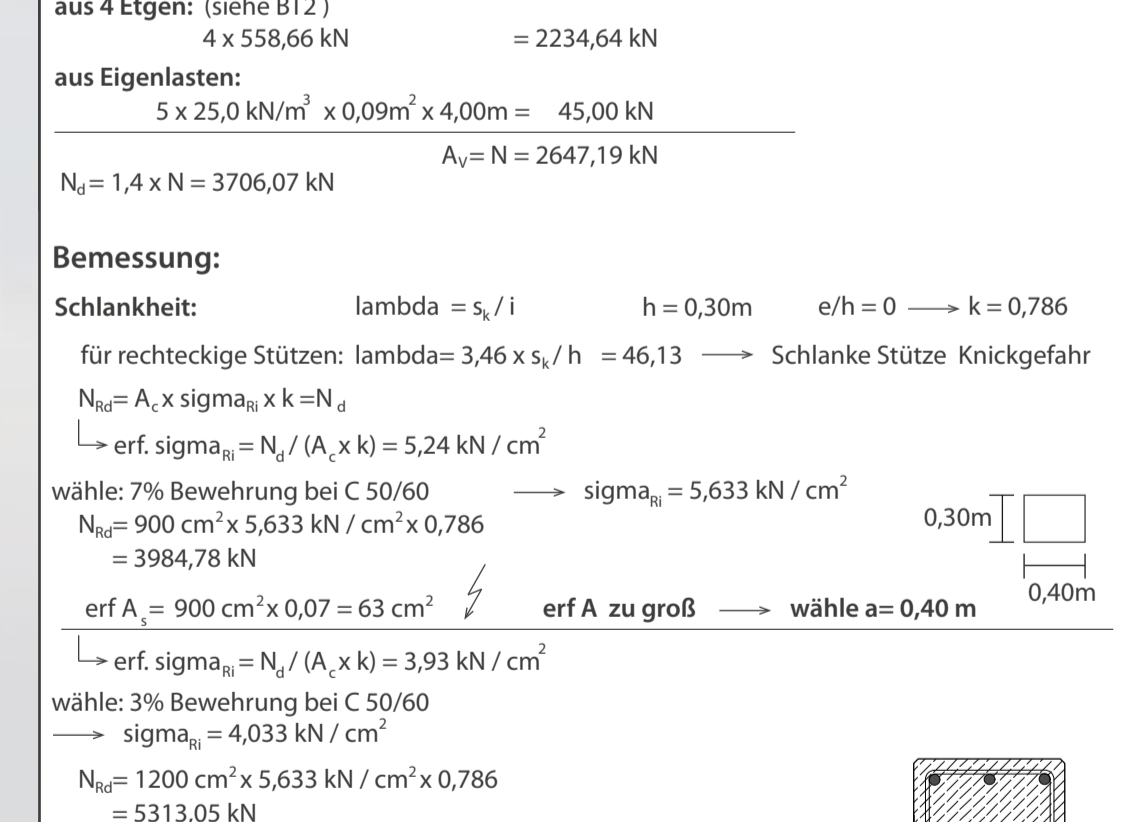
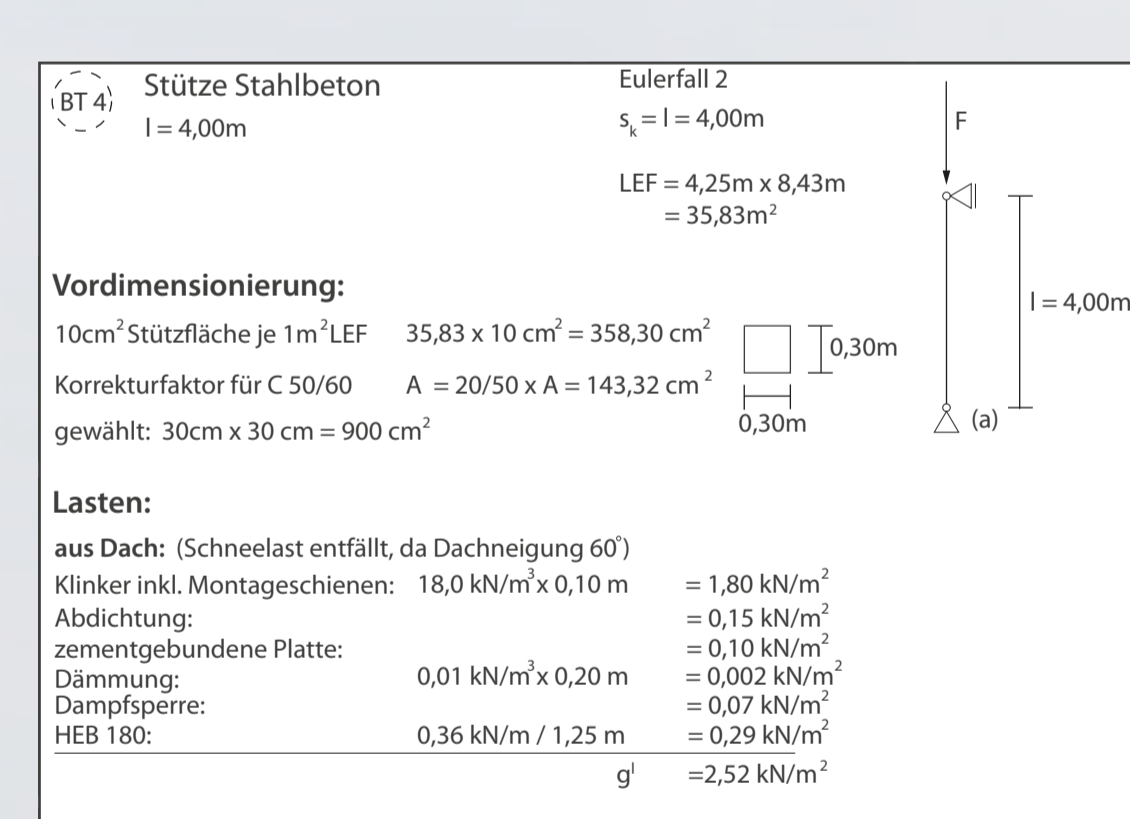
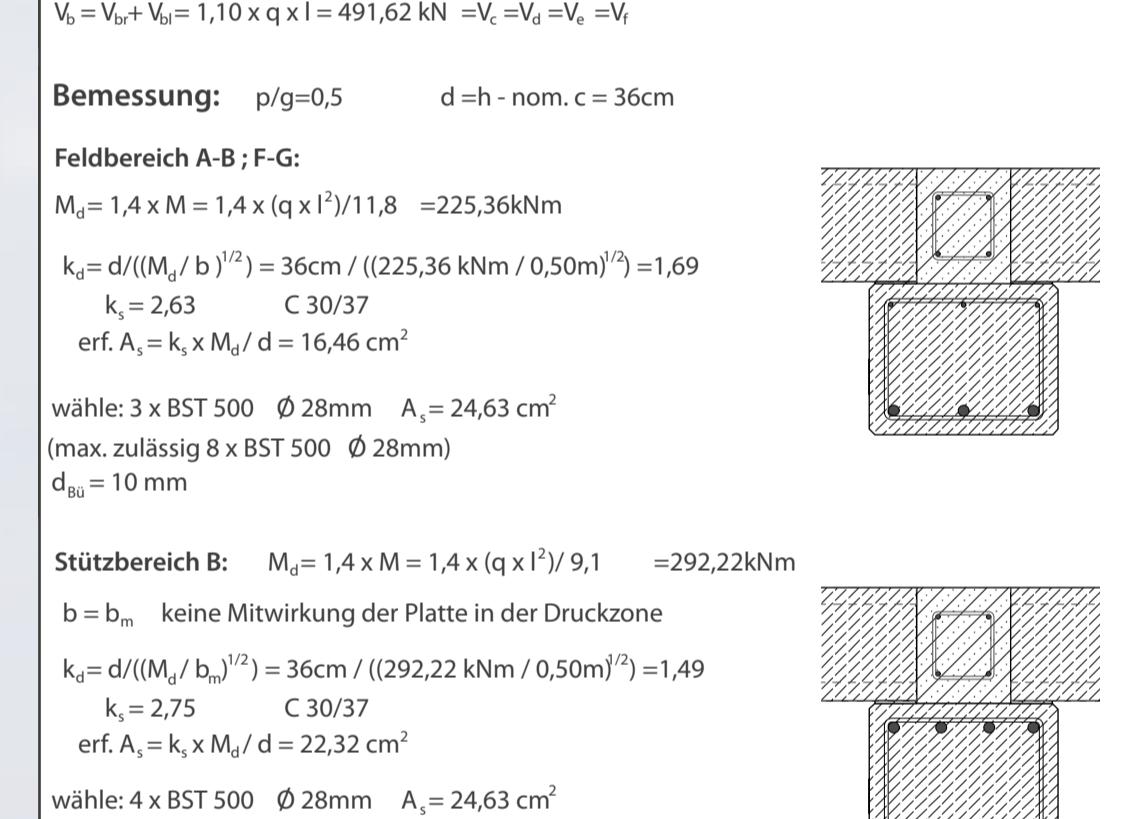
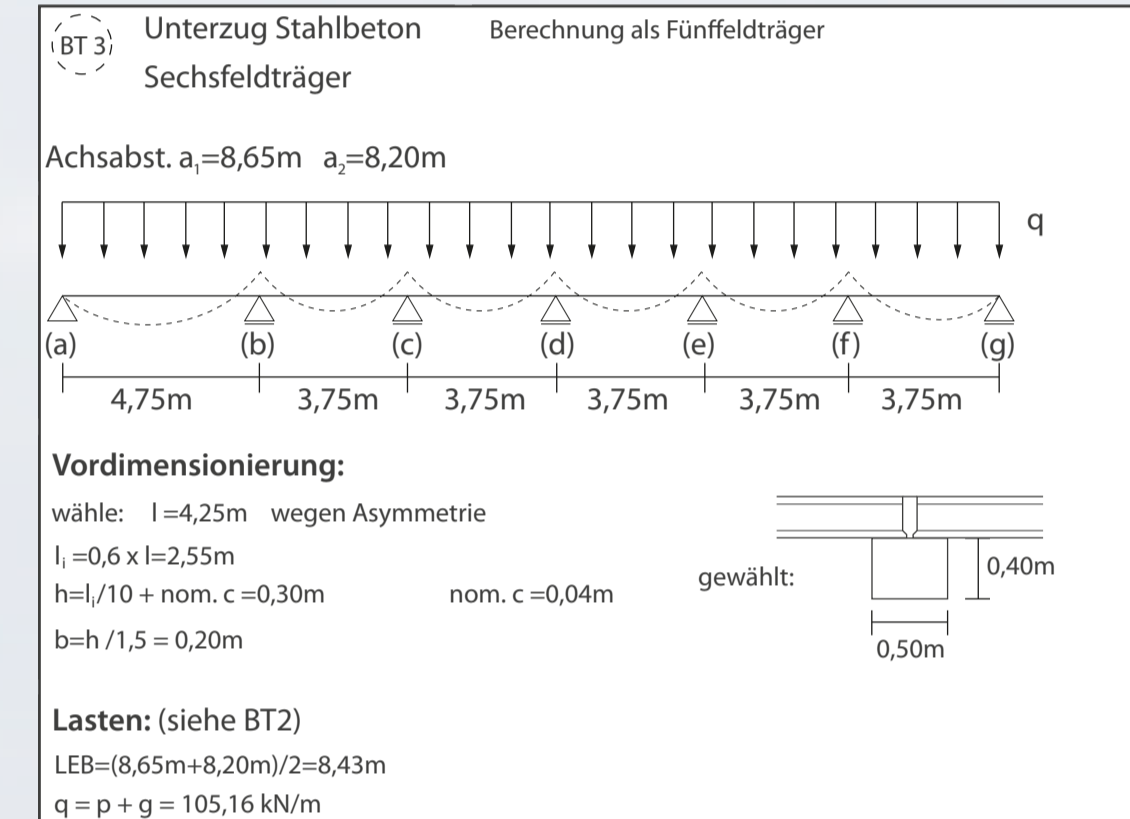
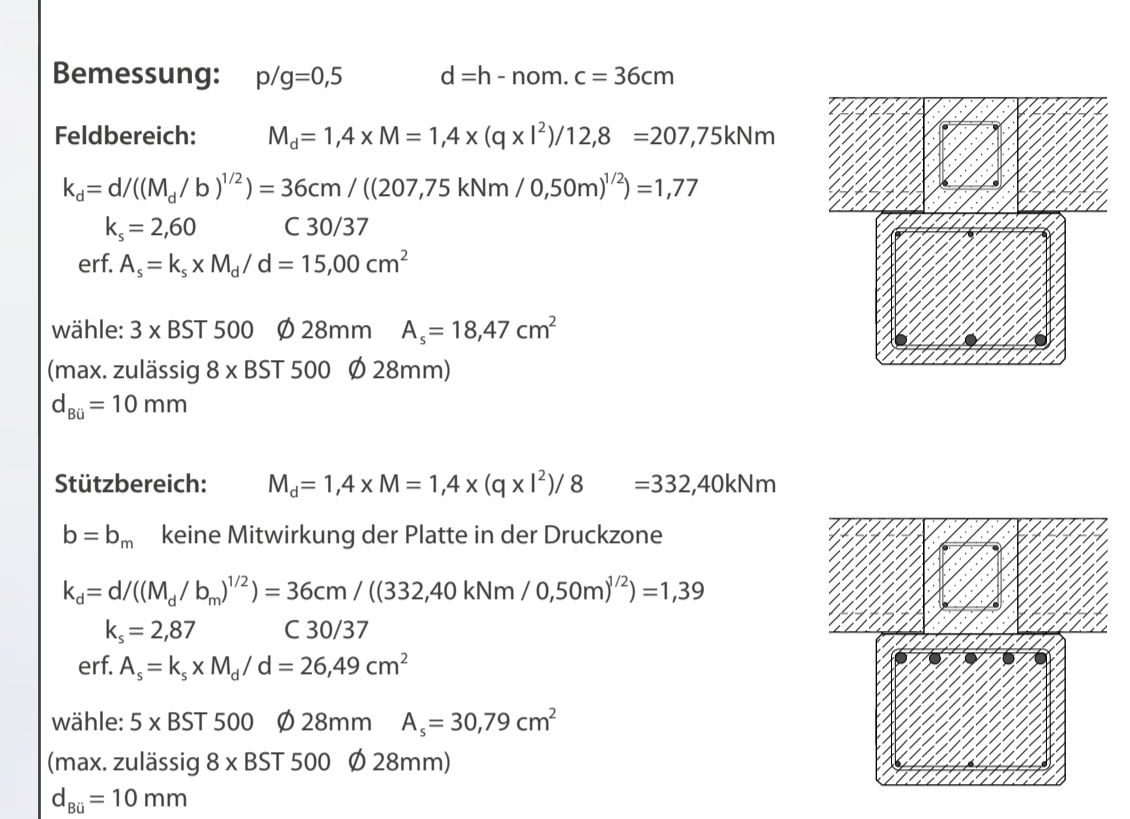
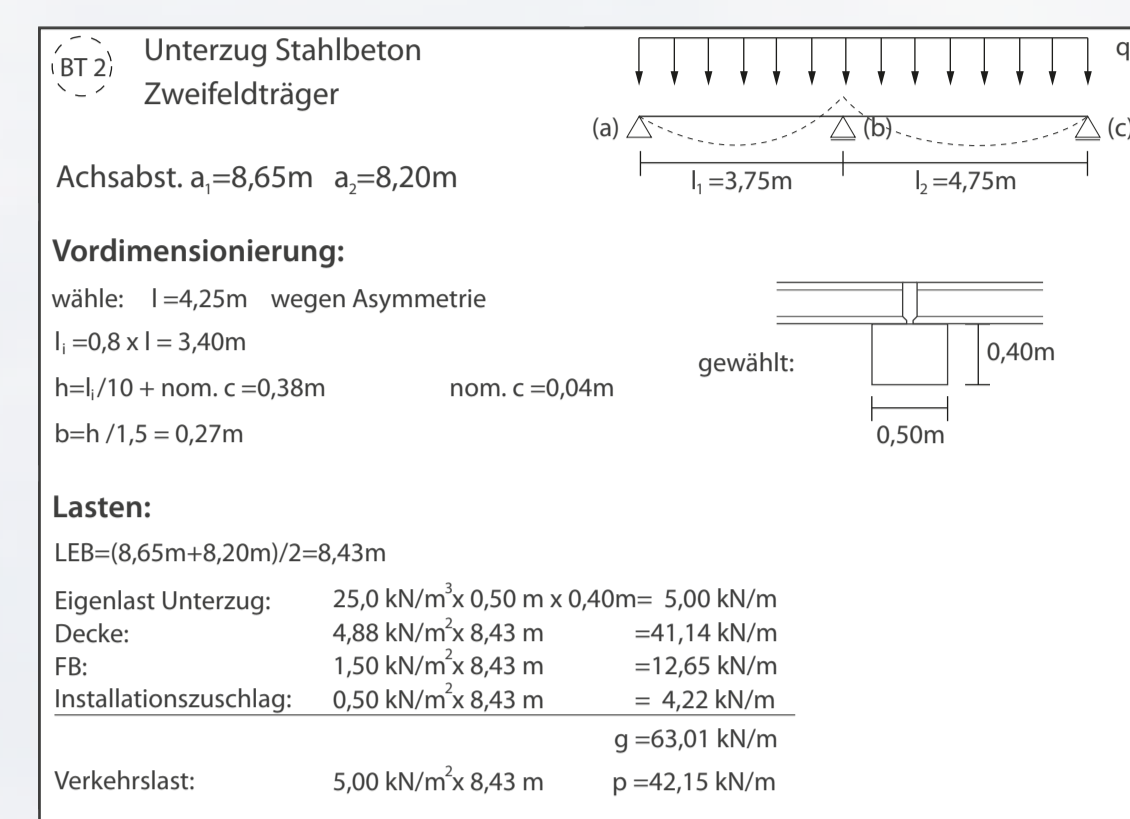
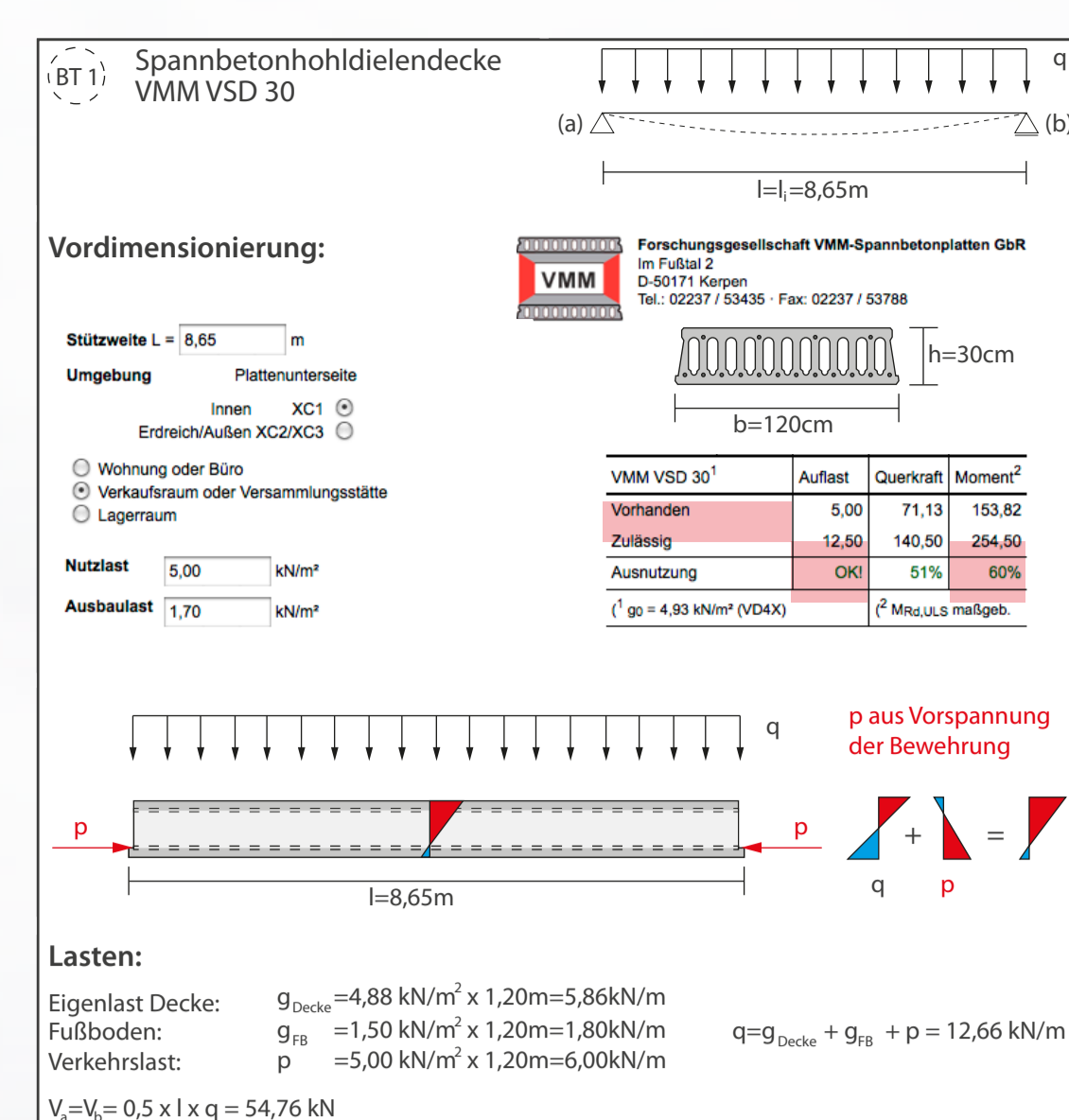
Querschnitt M1:200



Ausstellungskonzept



Ausstellungskonzept



Ansicht Ost M1:200