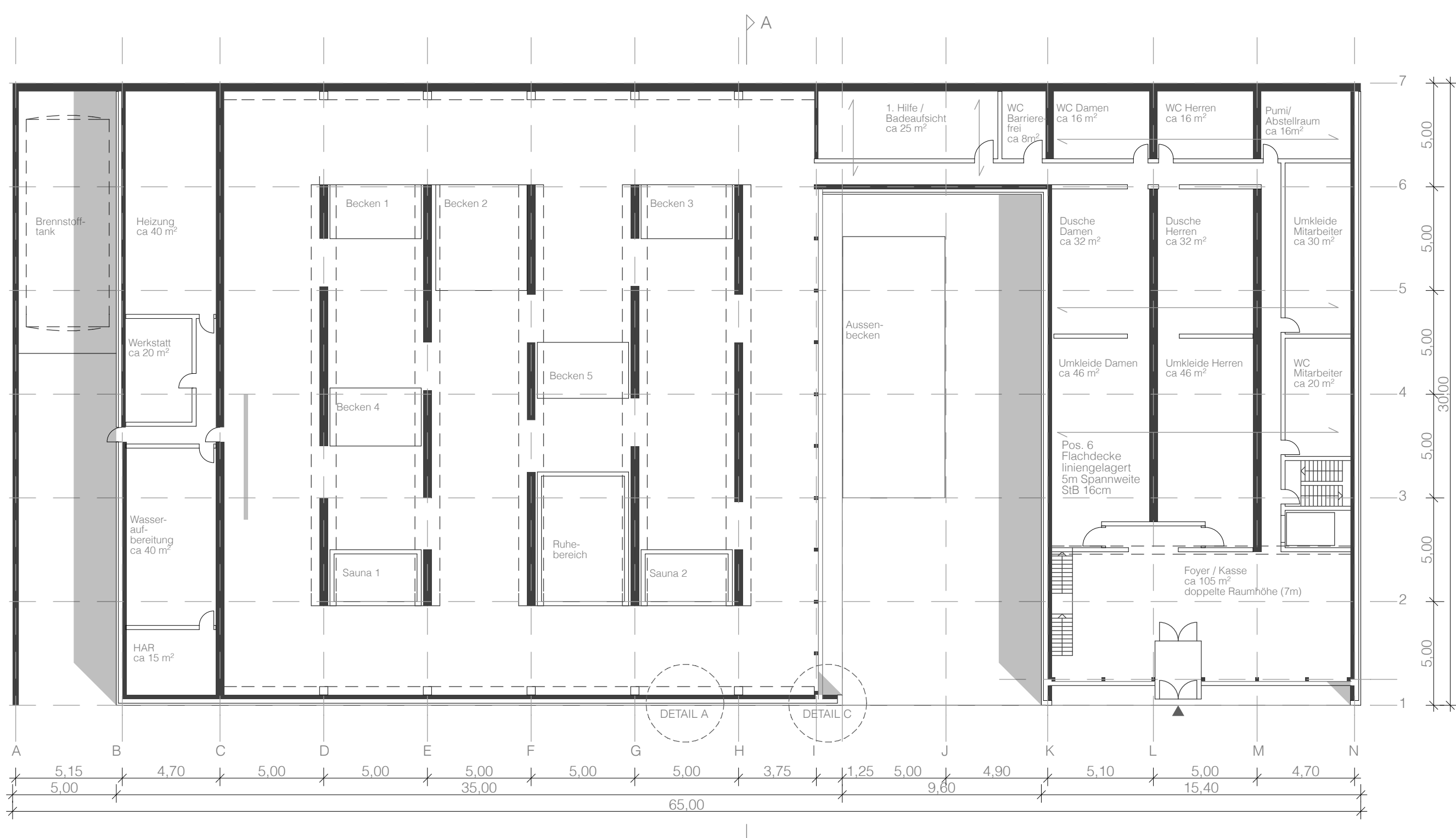
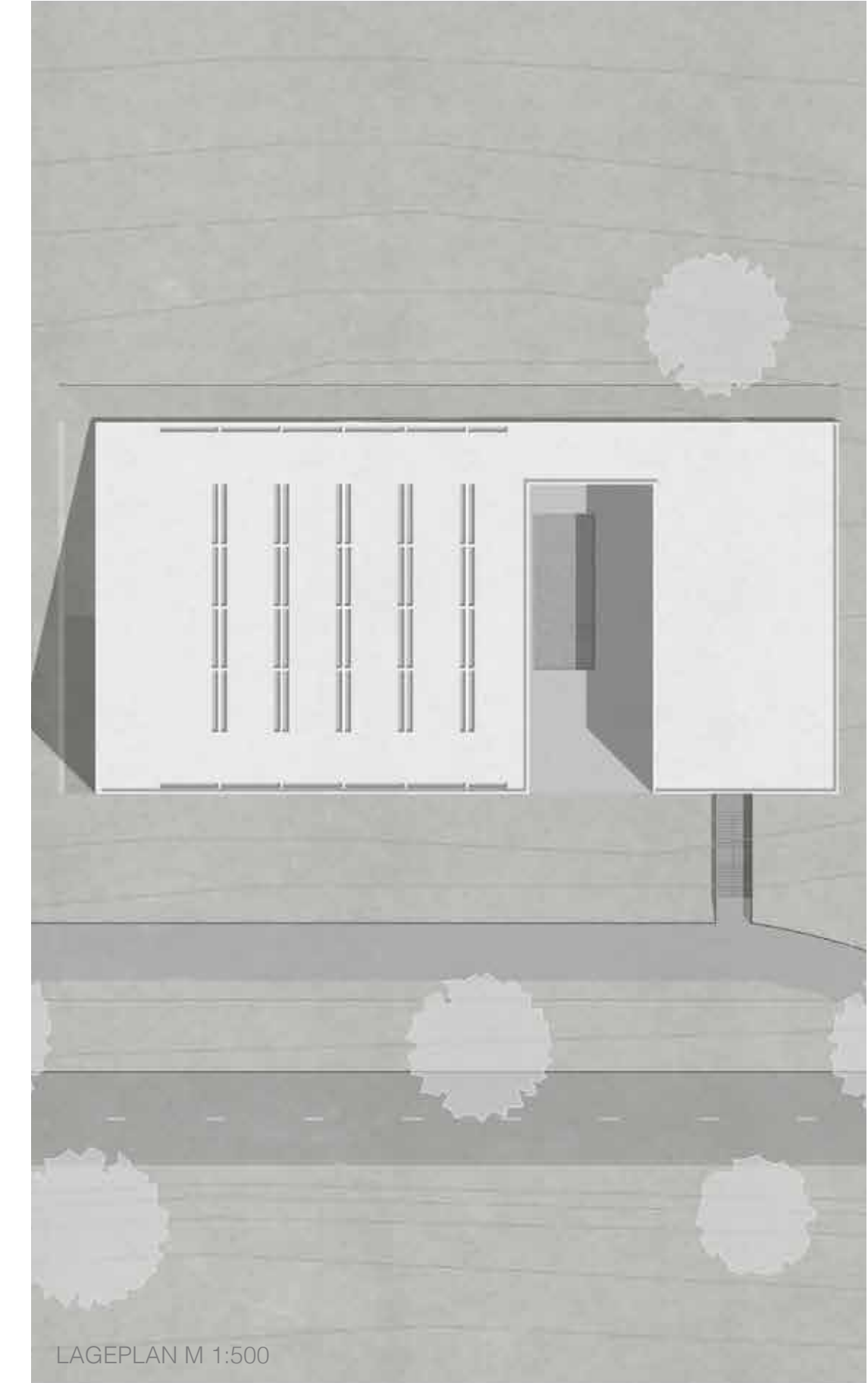


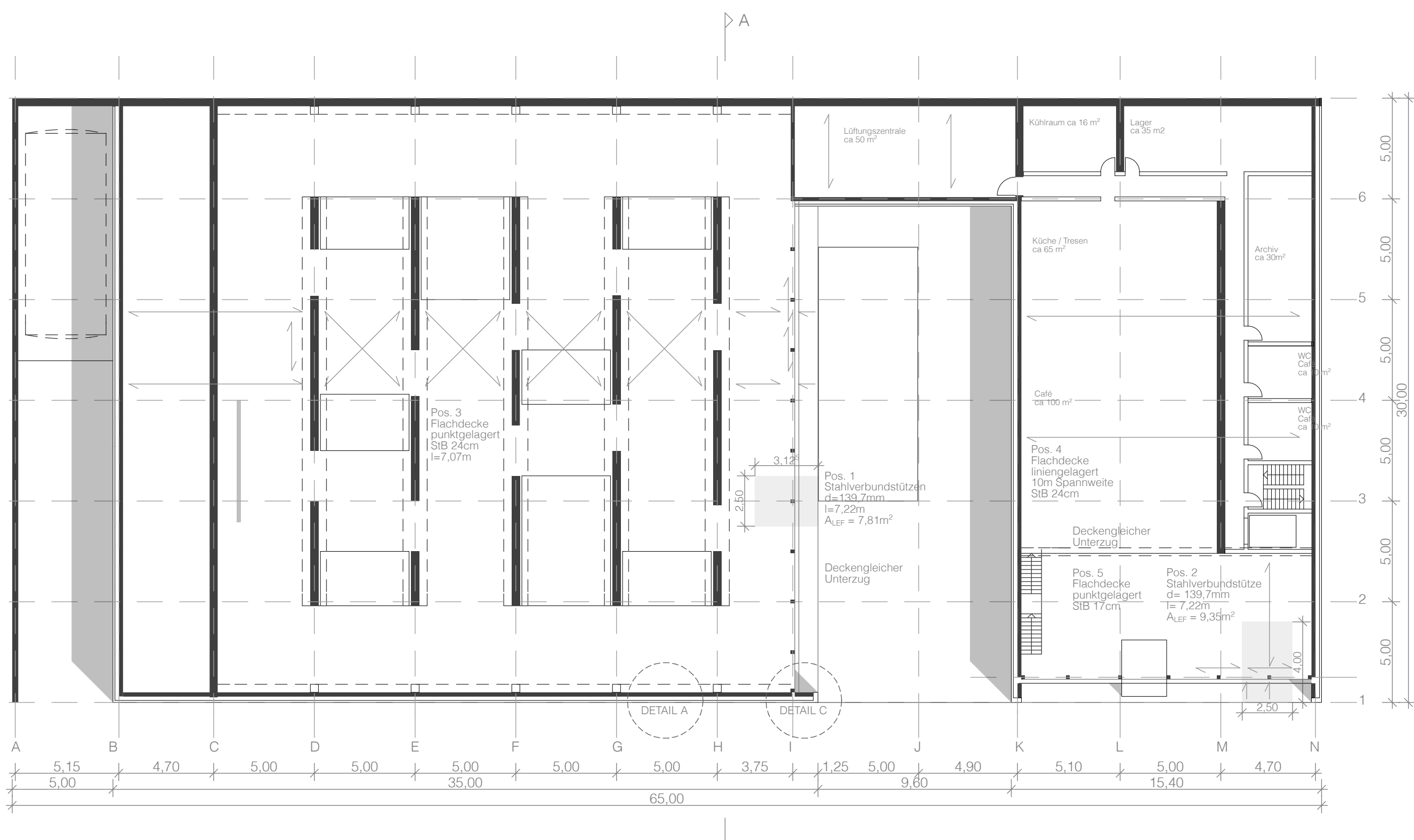


BT INT | SCHÖNER BADEN

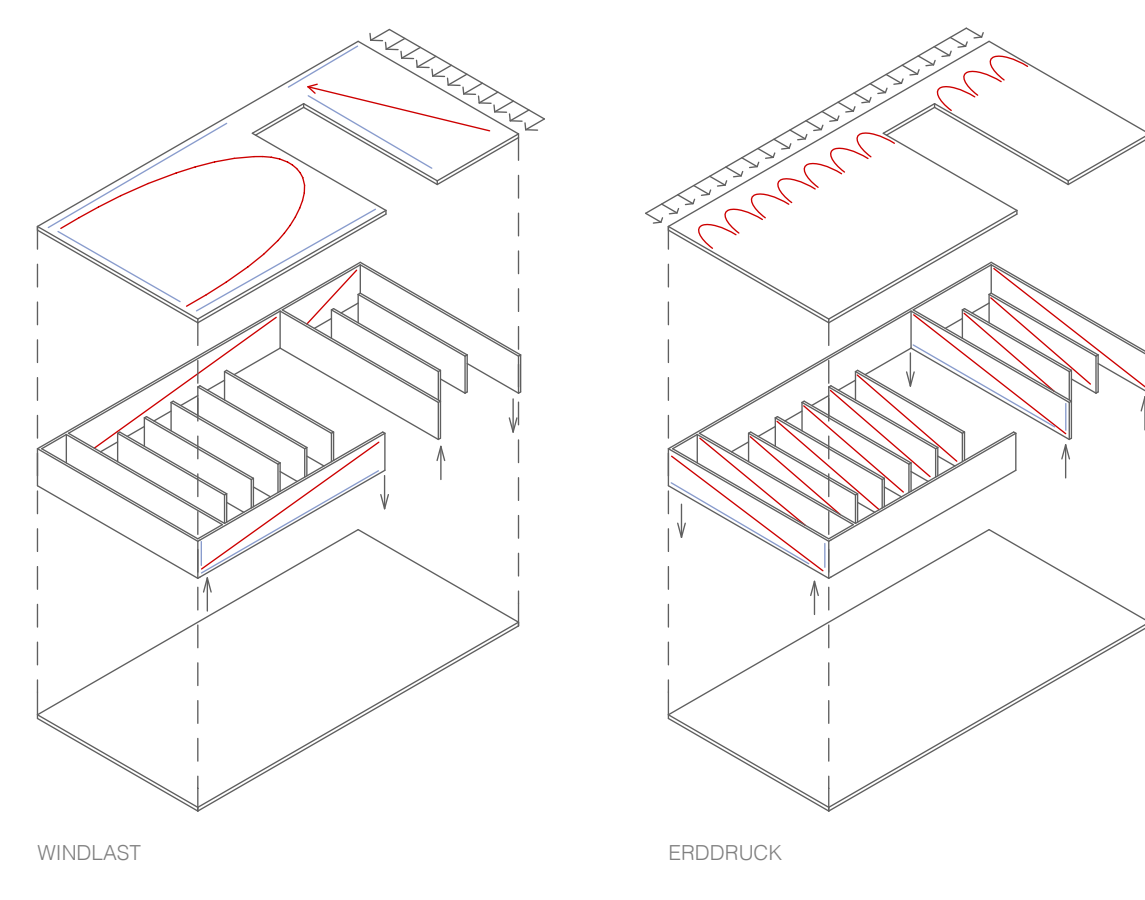
GRUPPE 24
S. BÜSCHER
T. SCHIRMER



GRUNDRISS EG M 1:200

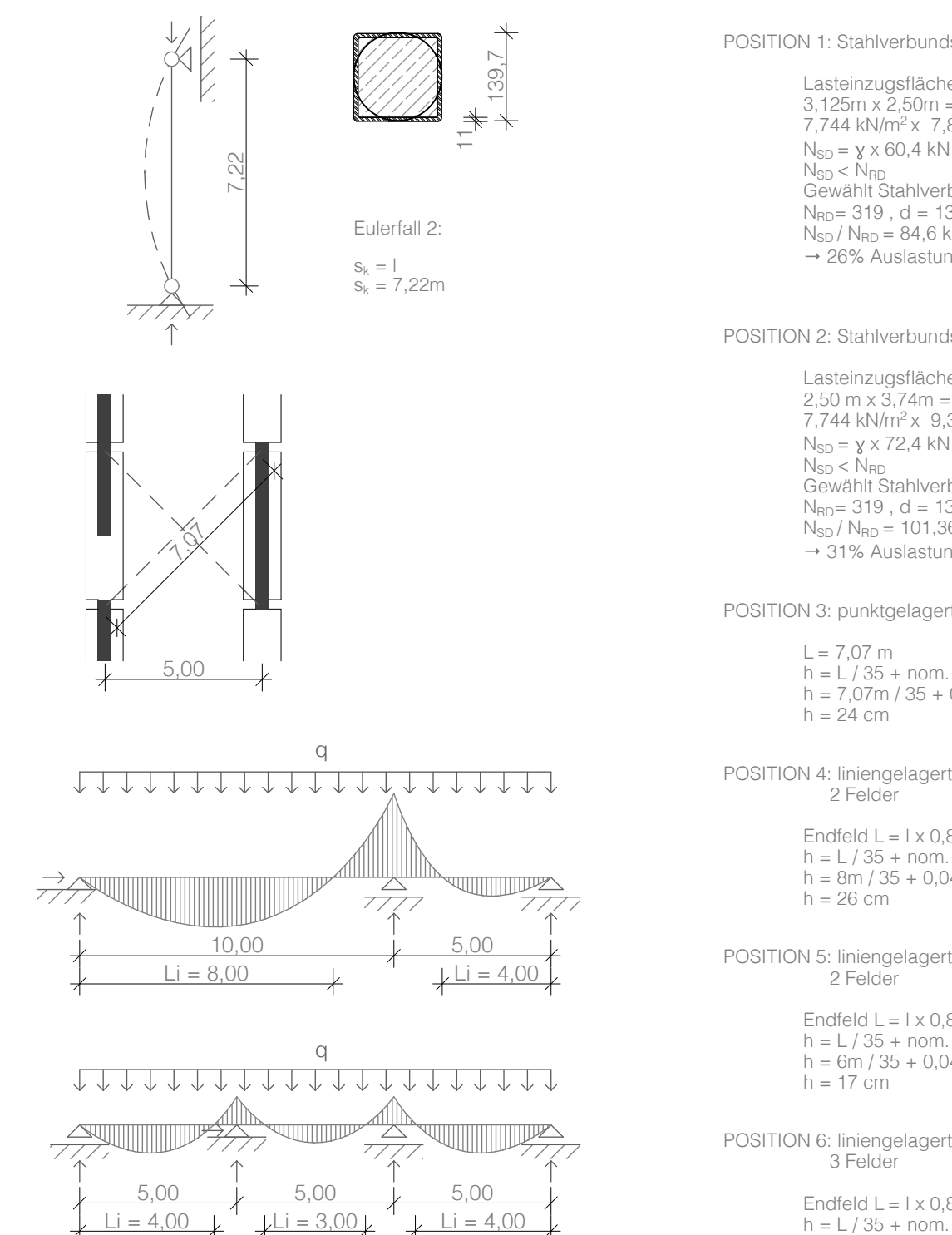


GRUNDRISS OG M 1:200

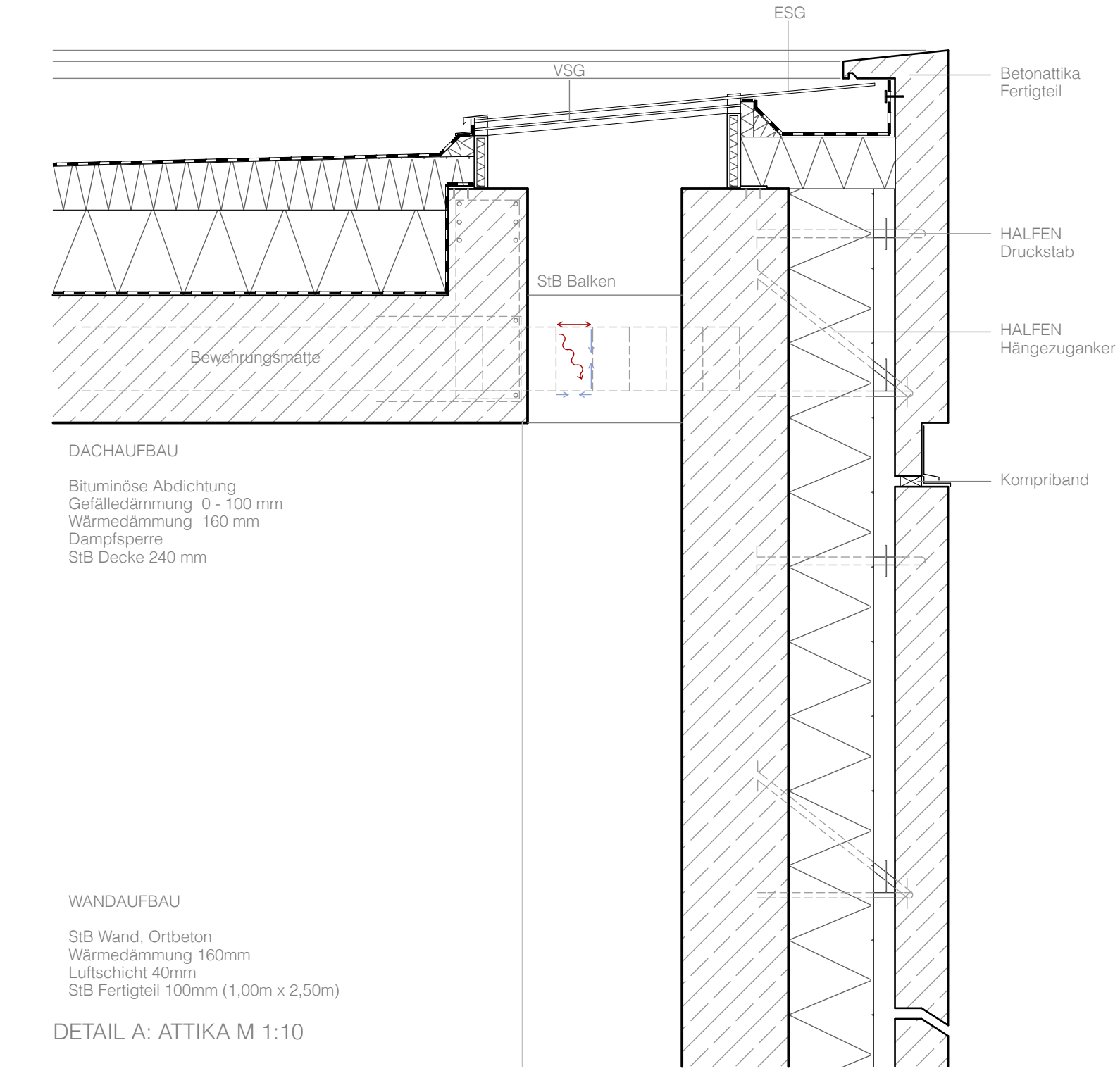


KONZEPT AUSSTEIFUNG

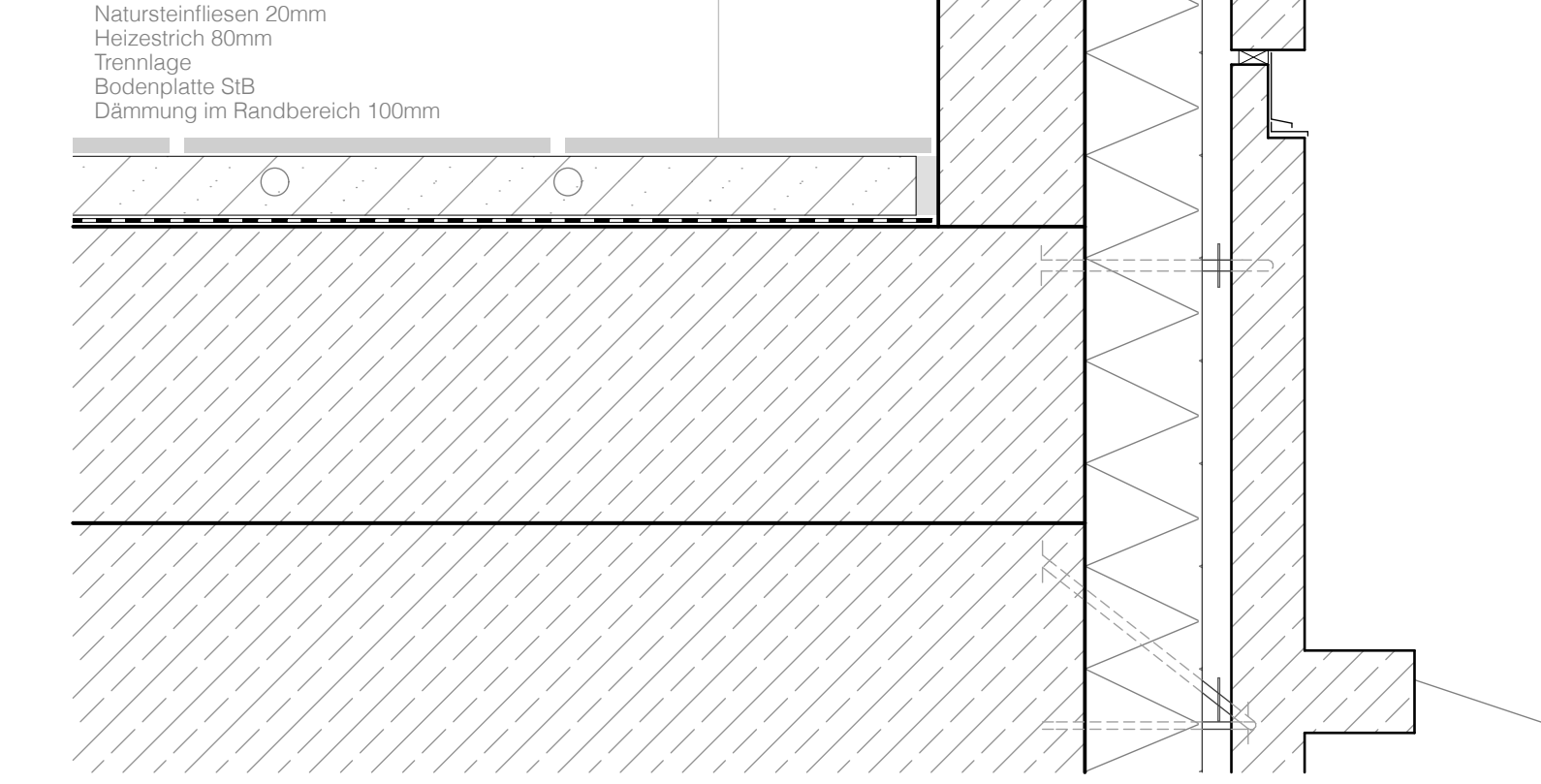
LASTNAHMEN			
DACHLAST			
Dachabdichtung	-	0,15 kN/m ²	0,15 kN/m ²
Dämmung	0,2m	0,05 kN/m ² /cm ²	0,10 kN/m ²
Dampfsperre	-	0,07 kN/m ²	0,07 kN/m ²
SB Decke	0,24m	0,25 kN/m ² /cm ²	0,60 kN/m ²
SCHNEELAST $g = s = 1,424 \text{ kN/m}^2$			
GESAMTLAST $g + s = 1,424 \text{ kN/m}^2 + 6,32 \text{ kN/m}^2$			



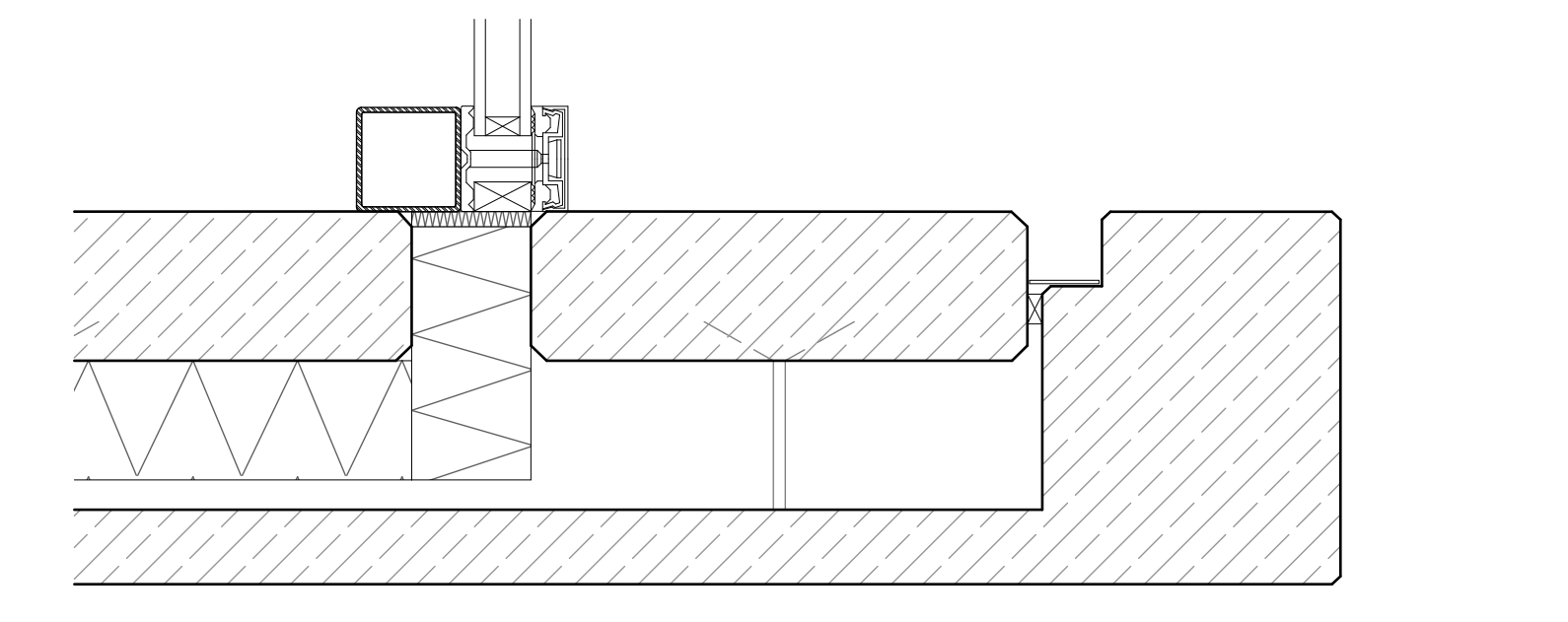
- POSITION 1:** Stahlverbundstütze Halle
Lastenoberfläche: $3,325m \times 2,20m = 7,315m^2$
 $7,744 \text{ kN/m}^2 \times 7,315m^2 = 60,4 \text{ kN}$
 $N_{Ed} = 60,4 \text{ kN} + 1,4 \times 60,4 \text{ kN} = 94,6 \text{ kN}$
 $N_{Ed} < N_{Rk}$
Gewählt Stahlverbundstift
 $N_{Ed} = 319, d = 139,7mm, l = 11mm$
 $N_{Rk} = 143,6 \text{ kN} / 319 \text{ kN} = 0,45$
 $\rightarrow 20\%$ Auslastung (wegen Windlast)
- POSITION 2:** Stahlverbundstütze Foyer
Lastenoberfläche: $2,59m \times 2,74m = 7,10m^2$
 $7,744 \text{ kN/m}^2 \times 7,10m^2 = 54,9 \text{ kN}$
 $N_{Ed} = 54,9 \text{ kN} + 1,4 \times 54,9 \text{ kN} = 101,36 \text{ kN}$
 $N_{Ed} < N_{Rk}$
Gewählt Stahlverbundstift
 $N_{Ed} = 319, d = 139,7mm, l = 11mm$
 $N_{Rk} = 101,36 \text{ kN} / 319 \text{ kN} = 0,31$
 $\rightarrow 14\%$ Auslastung (wegen Windlast)
- POSITION 3:** punktlagige Decke Halle
 $L = 7,07m$
 $h = L / 35 = \text{nom. } c$
 $h = 2,02m / 35 = 0,04m$
 $h = 24cm$
- POSITION 4:** innerselbstlagende Decke Café
2 Felder
Endfeld $L = 1 \times 0,8 = 10m \times 0,8 = 8m$
 $h = L / 35 = \text{nom. } c$
 $h = 8m / 35 = 0,04m$
 $h = 26cm$
- POSITION 5:** innerselbstlagende Decke Foyer
2 Felder
Endfeld $L = 1 \times 0,8 = 7,5m \times 0,8 = 6m$
 $h = L / 35 = \text{nom. } c$
 $h = 6m / 35 = 0,04m$
 $h = 17cm$
- POSITION 6:** innerselbstlagende Decke Umkleide
3 Felder
Endfeld $L = 1 \times 0,8 = 5m \times 0,8 = 4m$
 $h = L / 35 = \text{nom. } c$
 $h = 4m / 35 = 0,04m$
 $h = 16cm$



DETAIL A: ATTIKA M 1:10



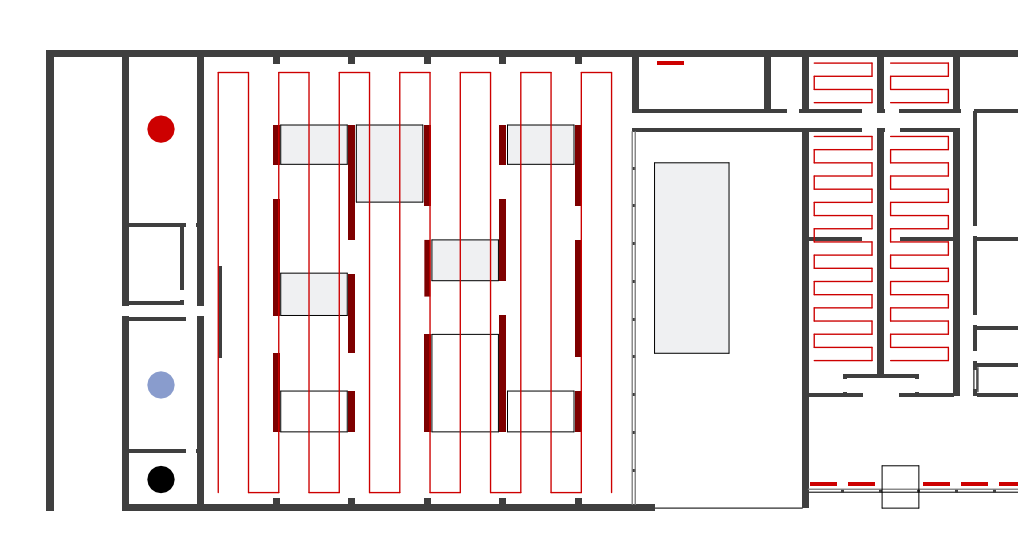
DETAIL B: SOCKEL M 1:10



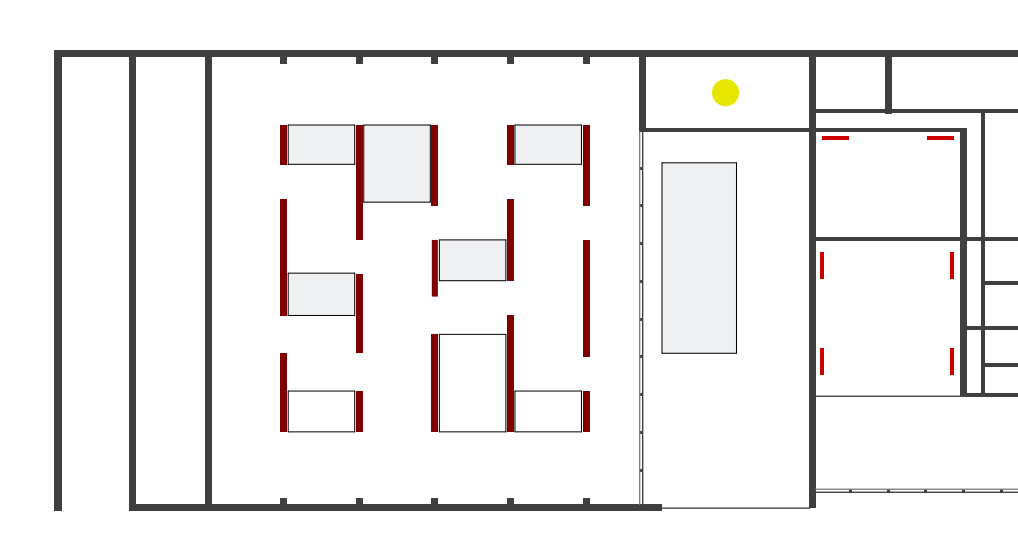
DETAIL C: ECKE M 1:10



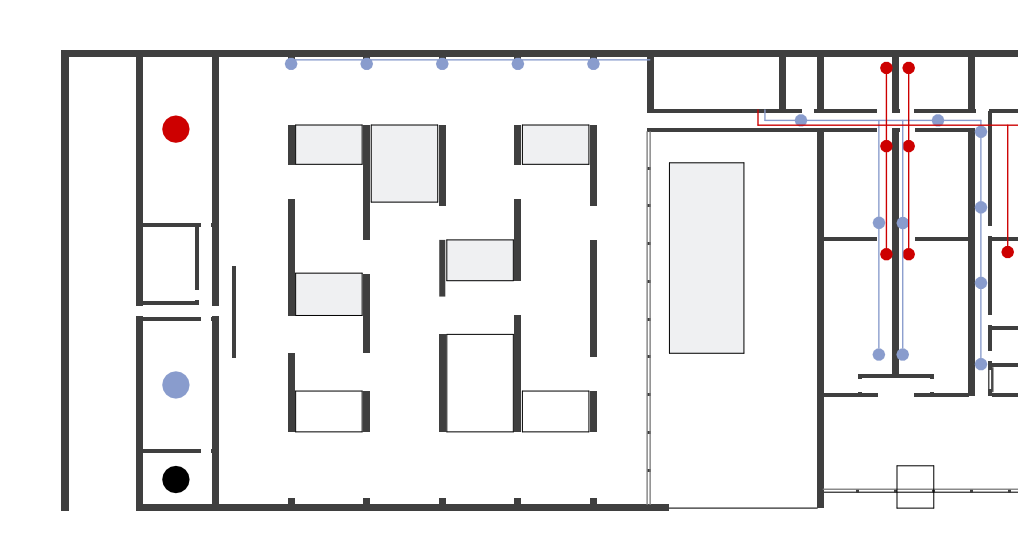
SCHNITT AA M 1:50



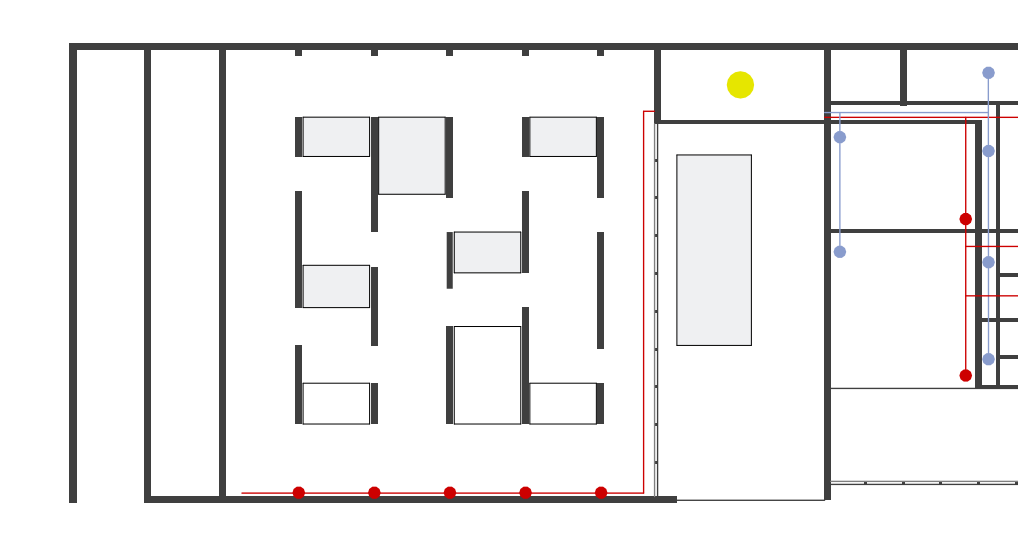
HEIZUNGSPLAN EG M 1:500



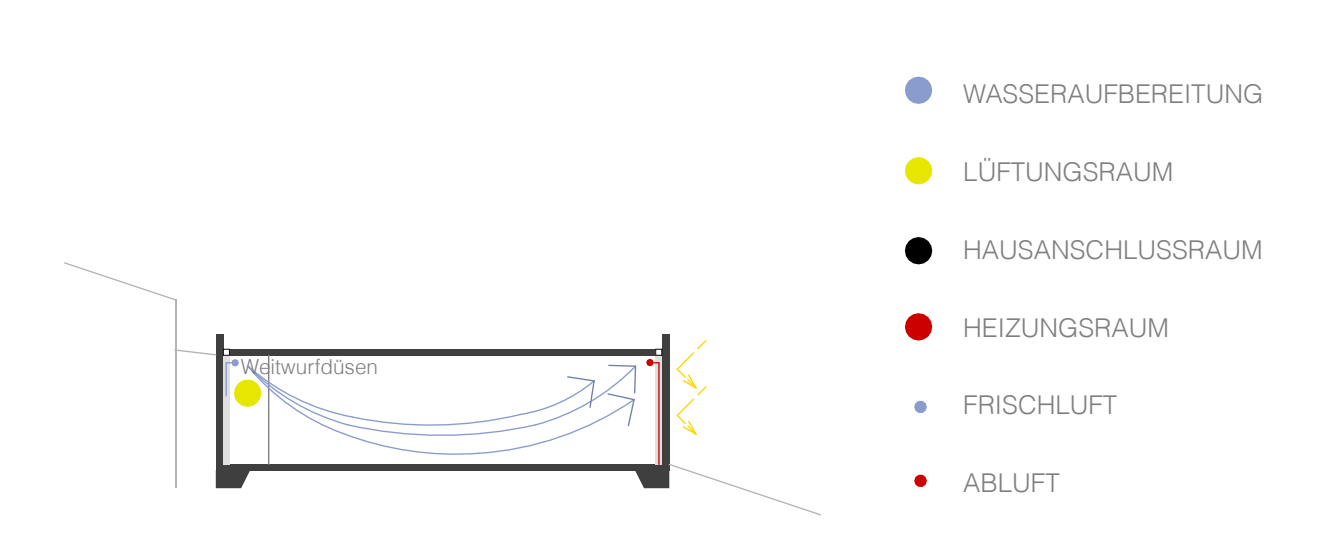
HEIZUNGSPLAN OG M 1:500



LÜFTUNGSPLAN EG M 1:500



LÜFTUNGSPLAN OG M 1:500



- WASSERAUFBEREITUNG
- LÜFTUNGSRAUM
- HAUSANSCHLUSSRAUM
- HEIZUNGSRAUM
- FRISCHLUFT
- ABLUF