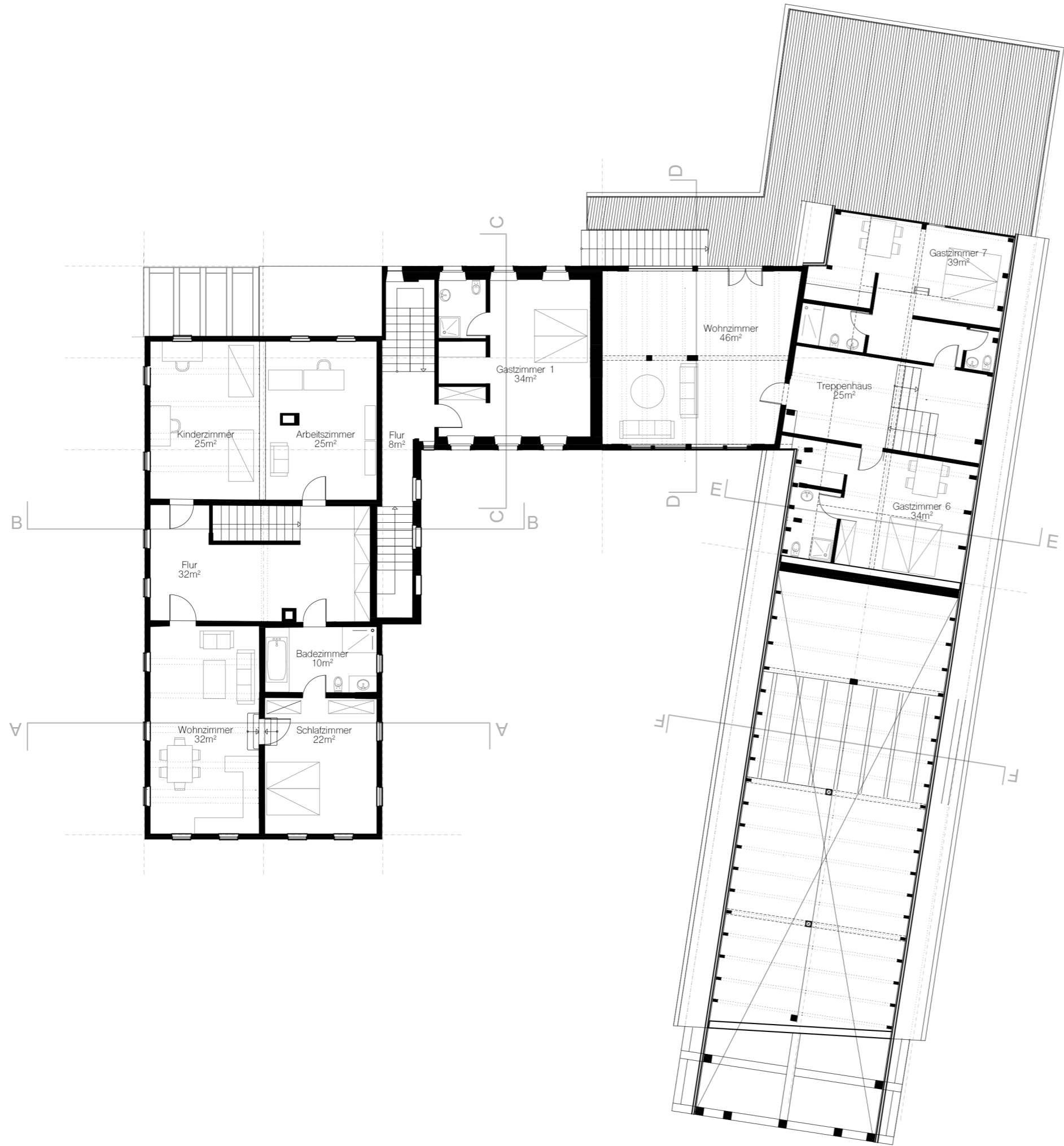


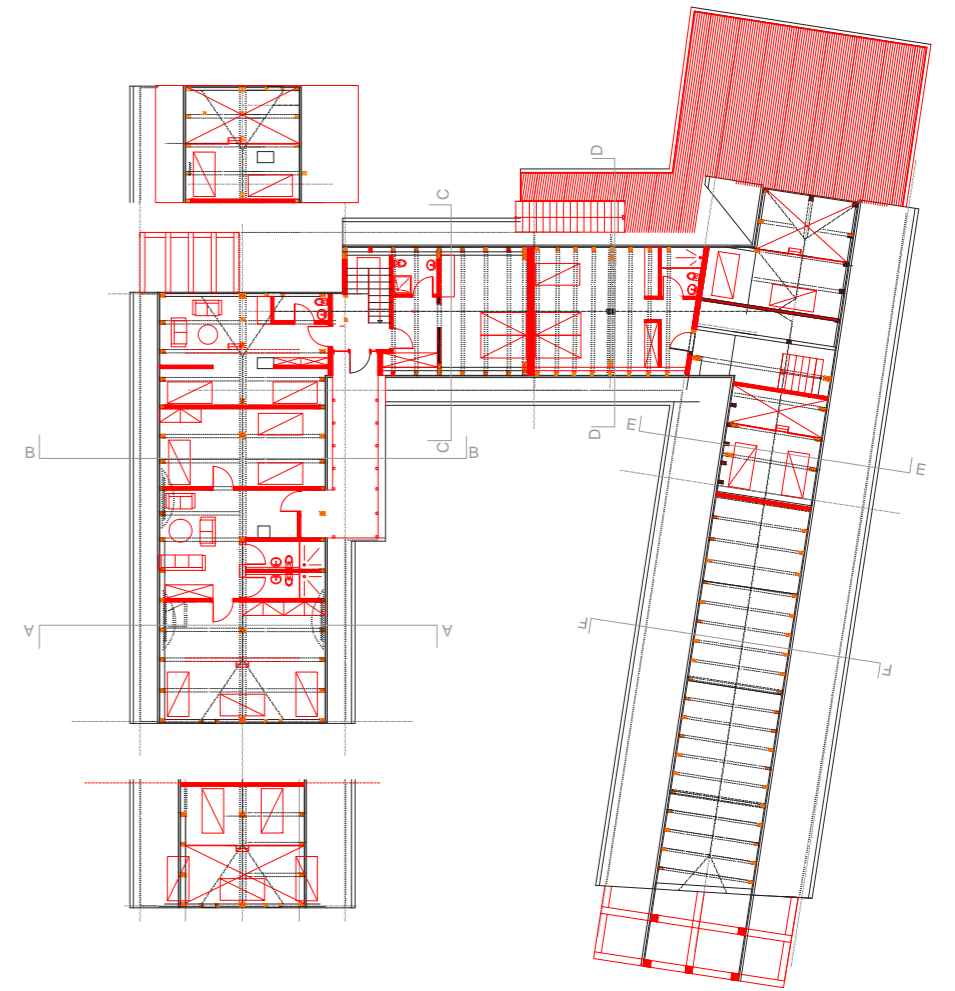
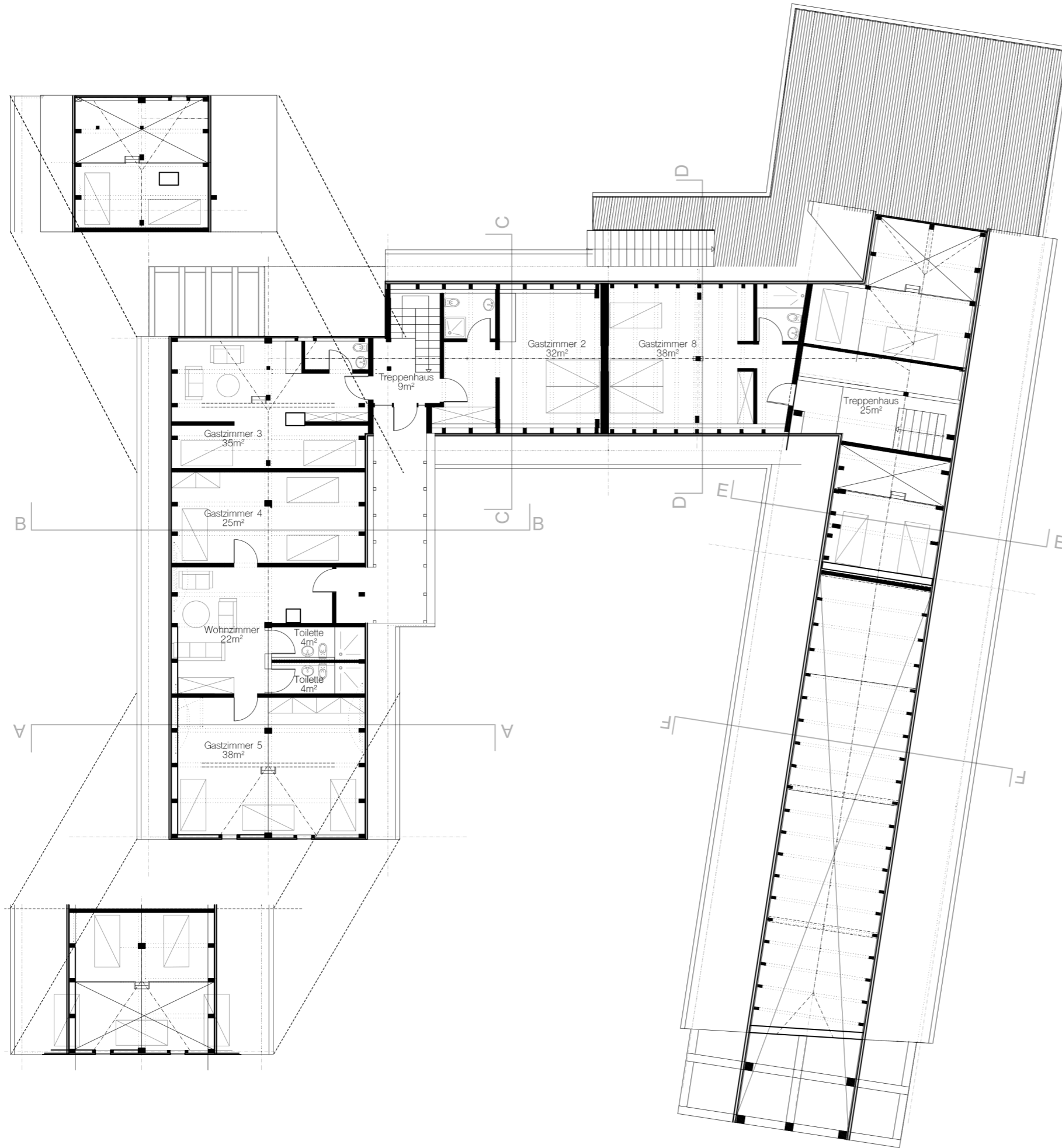
FAMILIE
GÄSTE



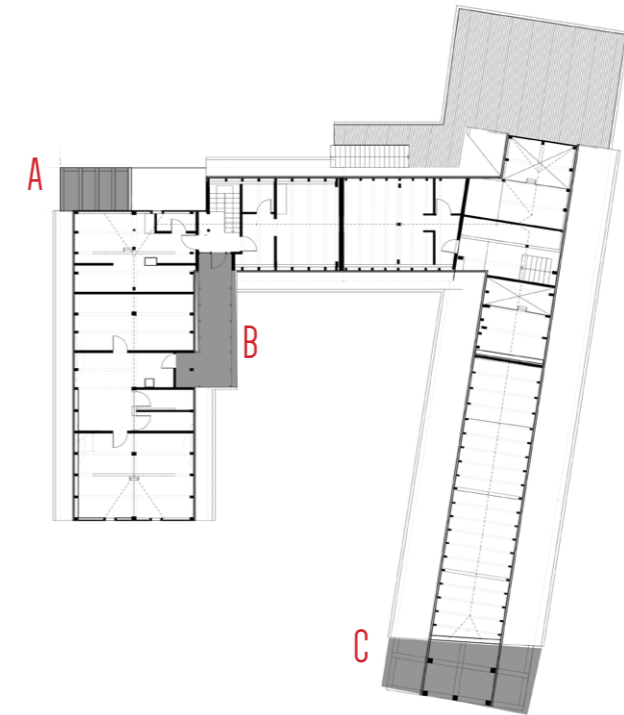
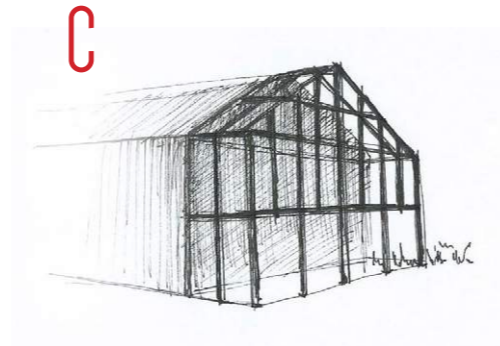
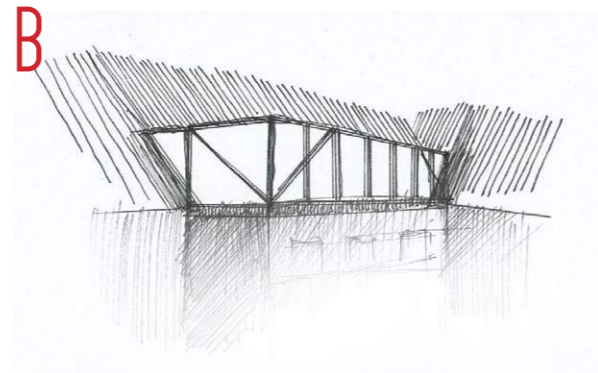
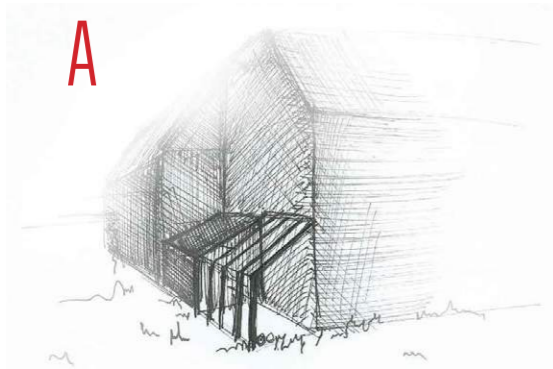


FAMILIE
GÄSTE



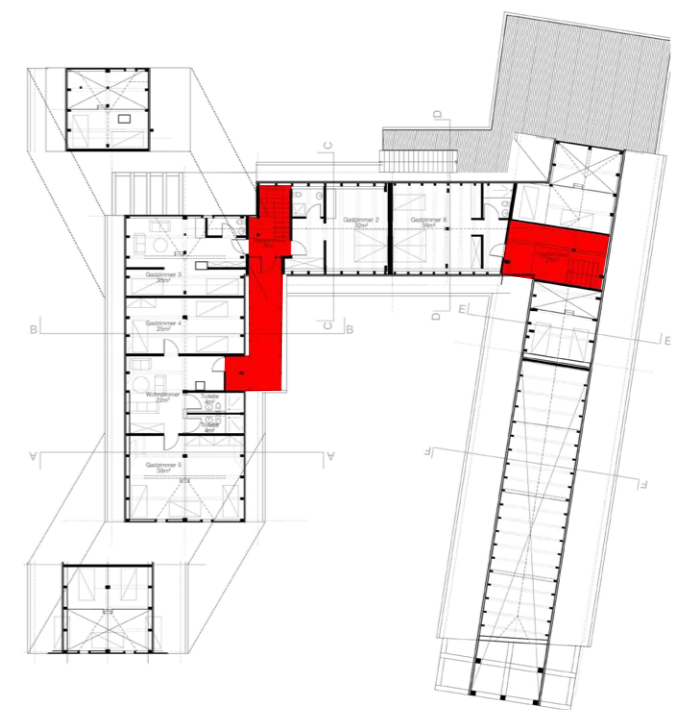
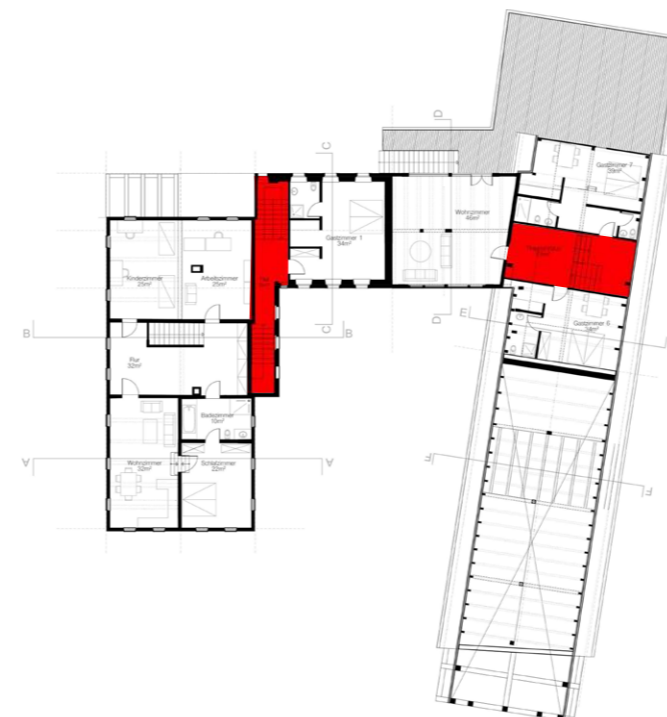
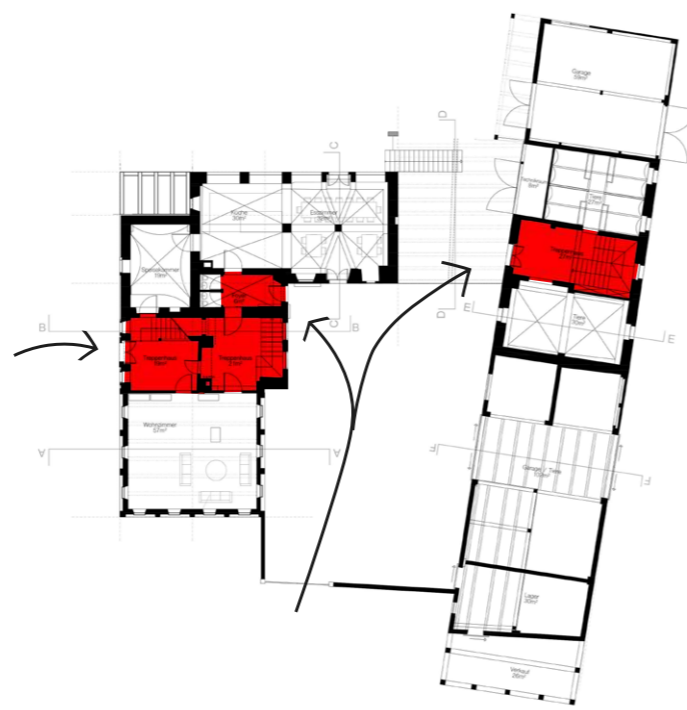
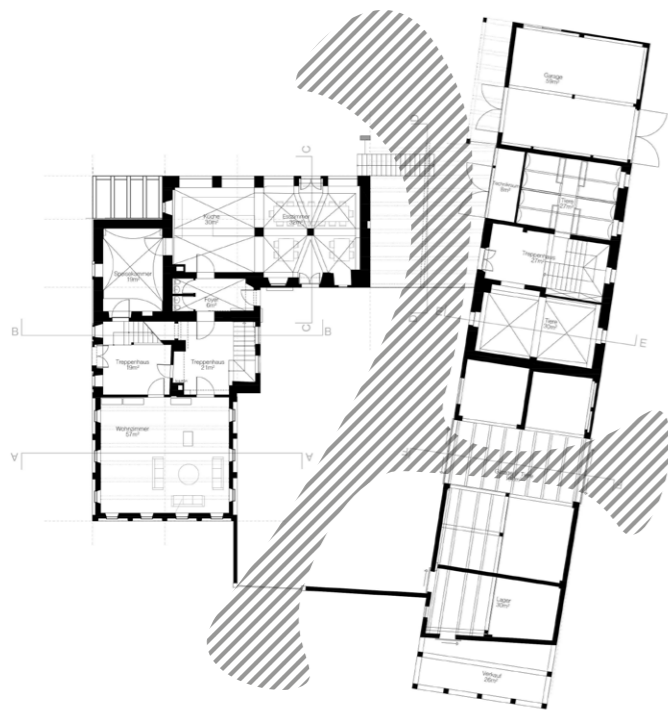


NEUE ELEMENTE



VERKEHR

TREPPENHAUS



ERDGESCHOSS. VERKEHR DURCH DIE GANZE BEBAUNG.

ERDGESCHOSS. EINE SEPARATE EINGÄNGE. VON OSTEN EIN EINGANG FÜR FAMILIE. VON HOFSEITE ZWEI EINGÄNGE FÜR GÄSTE.

OBERGESCHOSS. EINE VERTEILUNG DES GEBÄUDES IN ZWEI TEILEN DURCH TREPPENHÄUSE, DIE ZU GÄSTRÄUME FÜHREN

DACHGESCHOSS. EIN AUSBAU DES DACHS IN DIE ÄLTERE TEIL DES GEBÄUDES ZWECKS EINES BESSERES VERKEHRS



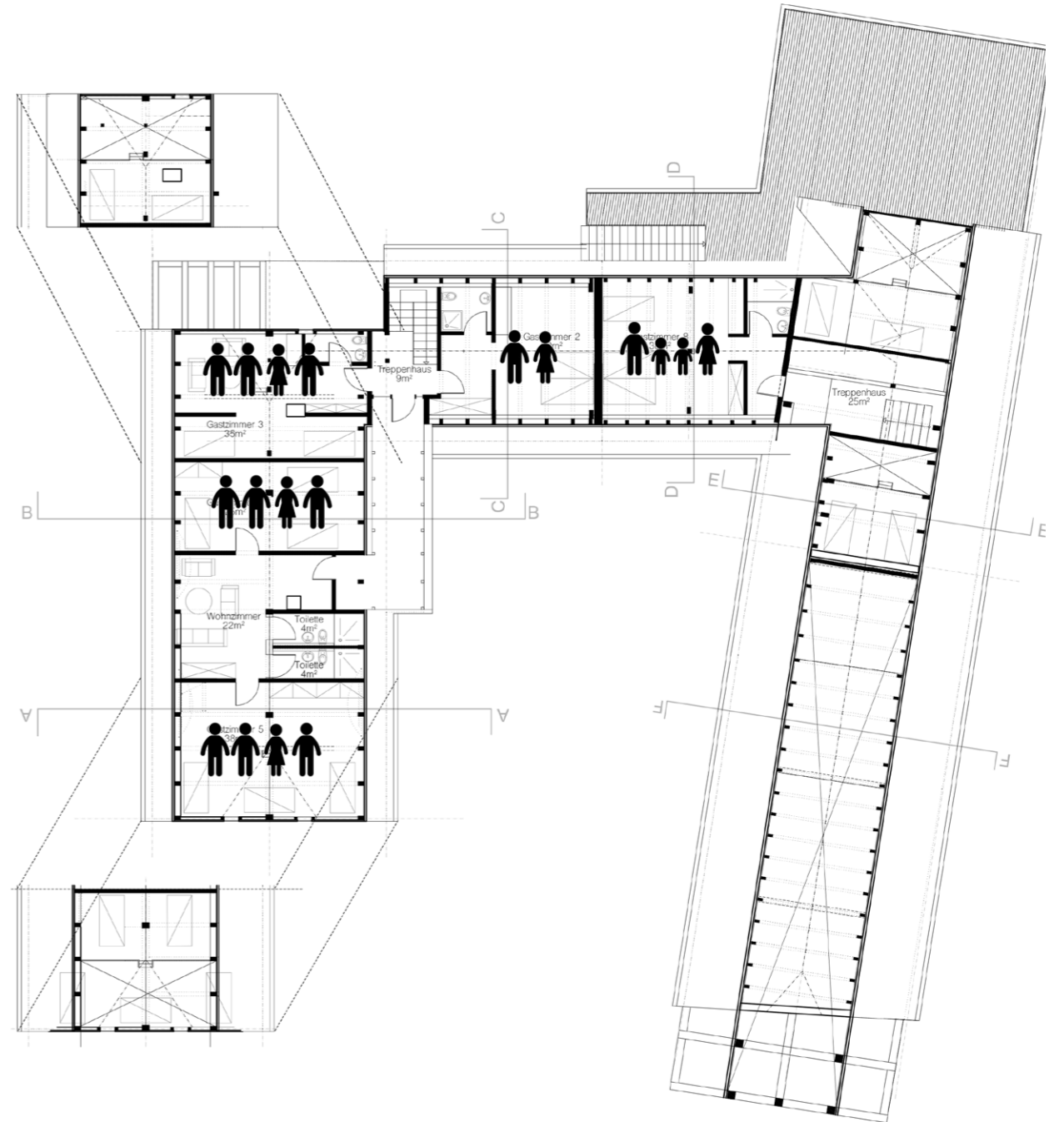
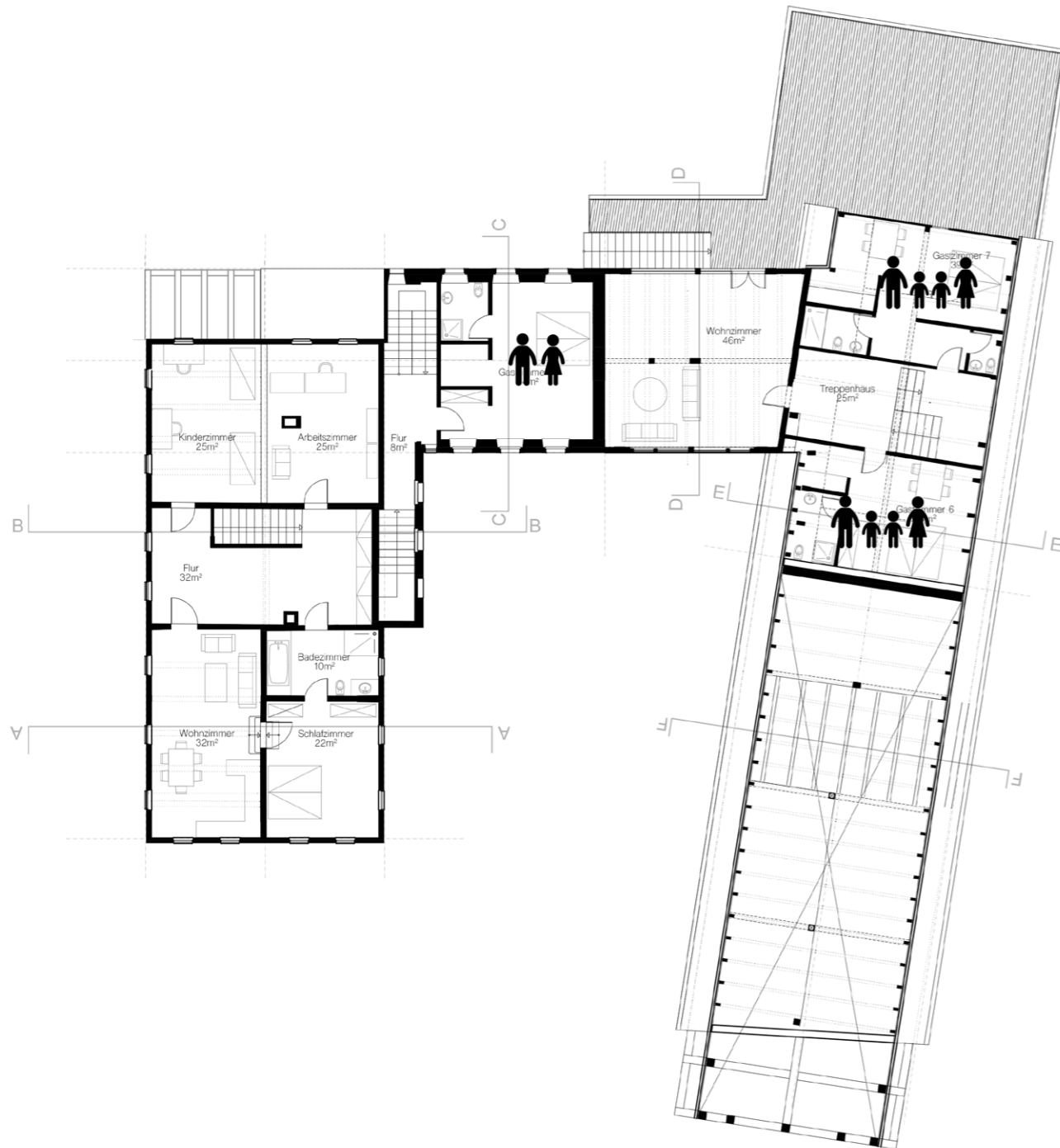
ZIMMER 1: 2 GÄSTE
ZIMMER 2: 2 GÄSTE

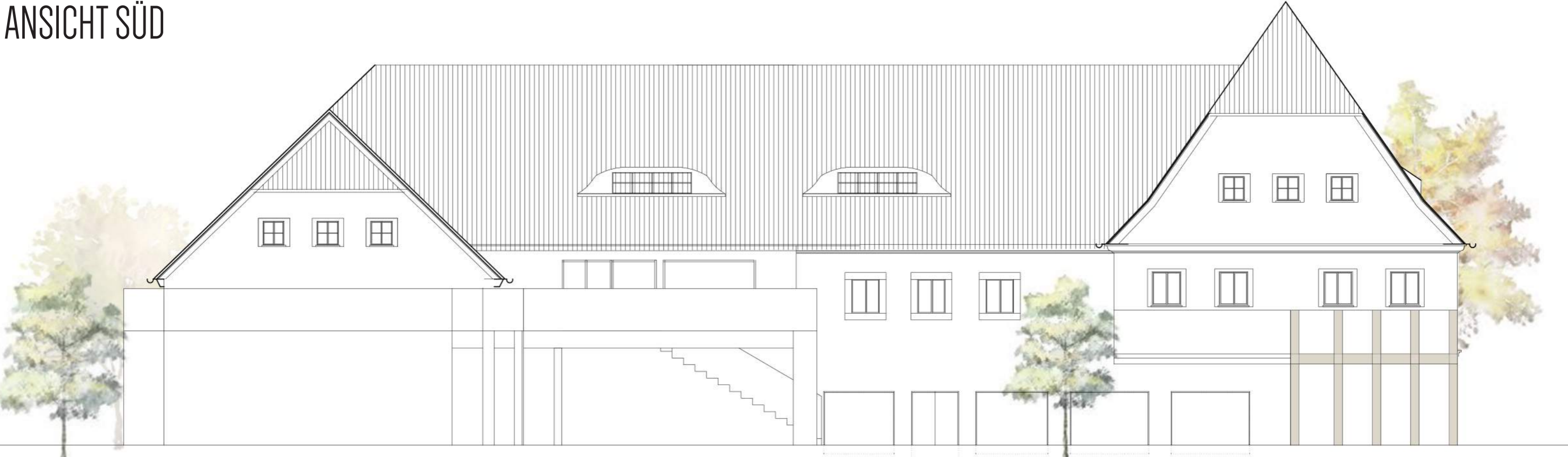


ZIMMER 3: 4 GÄSTE
ZIMMER 4: 3 GÄSTE
ZIMMER 5: 4 GÄSTE



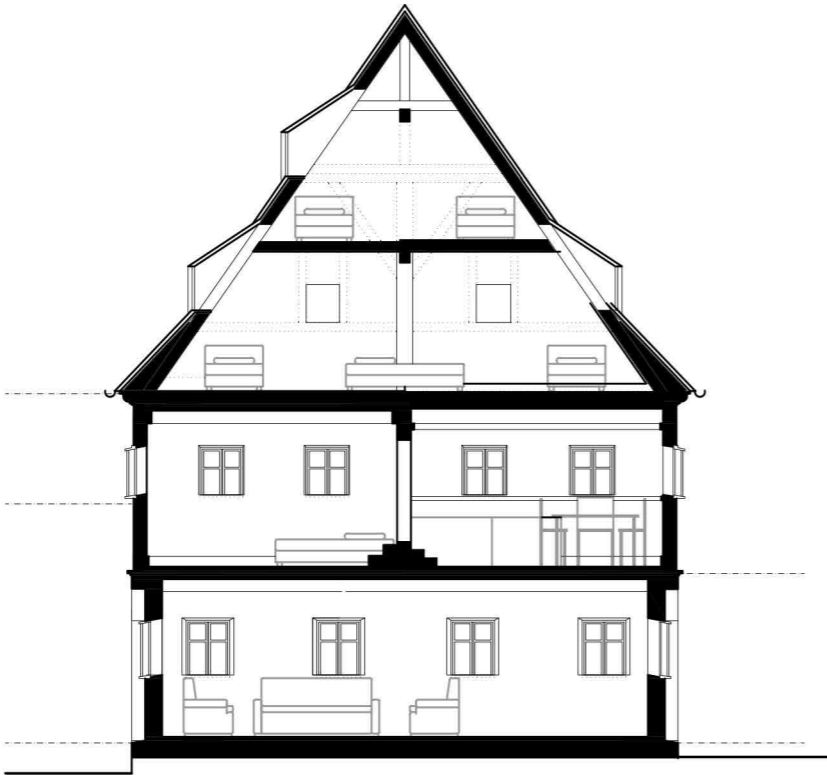
ZIMMER 6: 4 GÄSTE
ZIMMER 7: 4 GÄSTE
ZIMMER 8: 3 GÄSTE



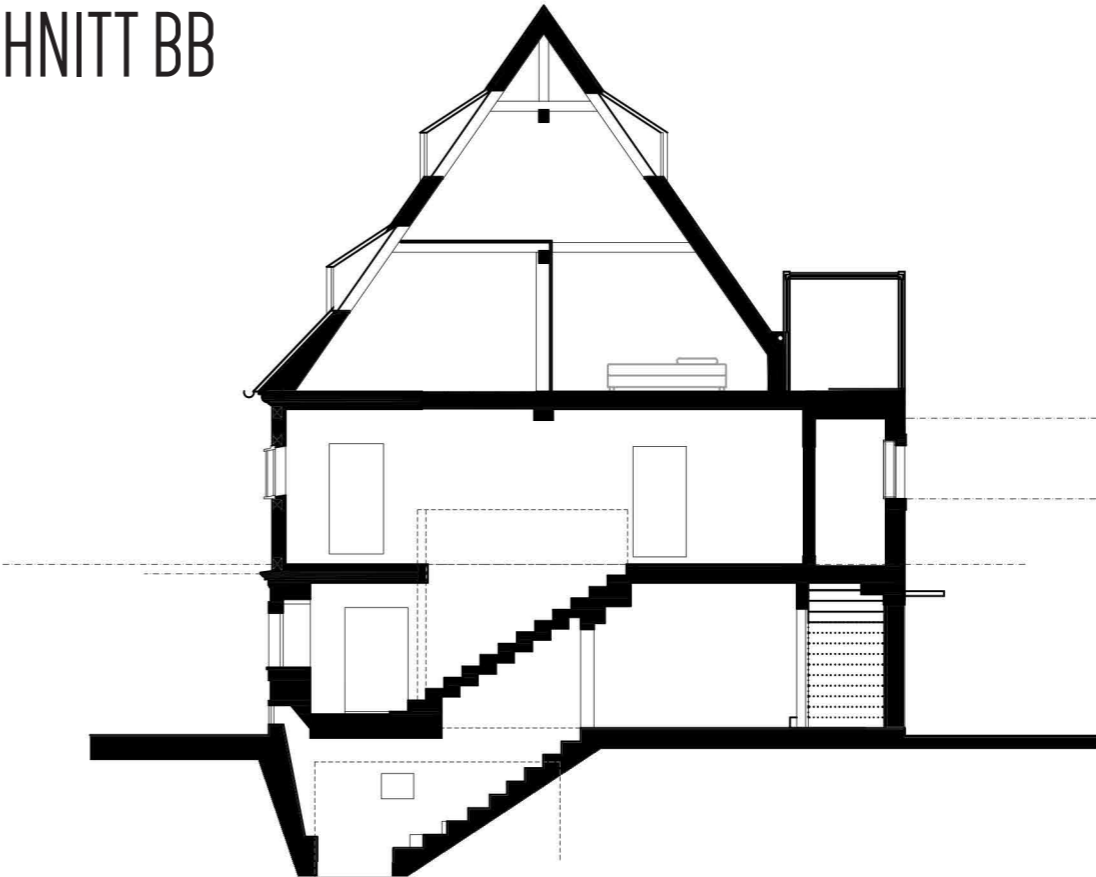




SCHNITT AA

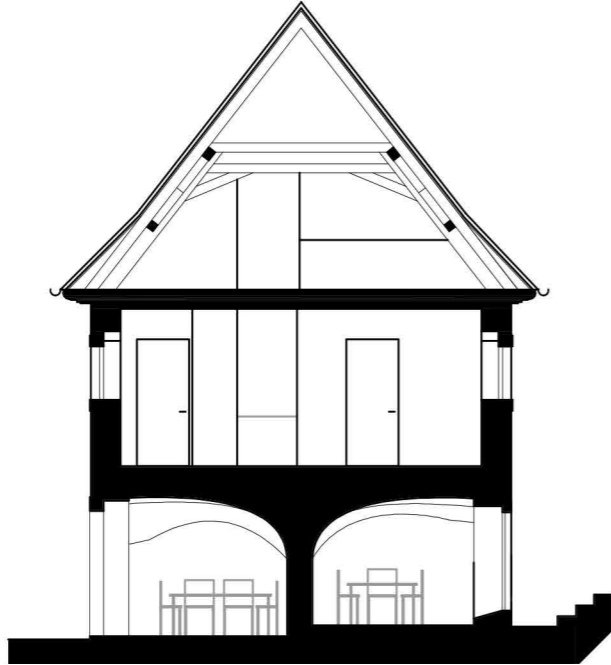


SCHNITT BB





SCHNITT CC



SCHNITT DD

